

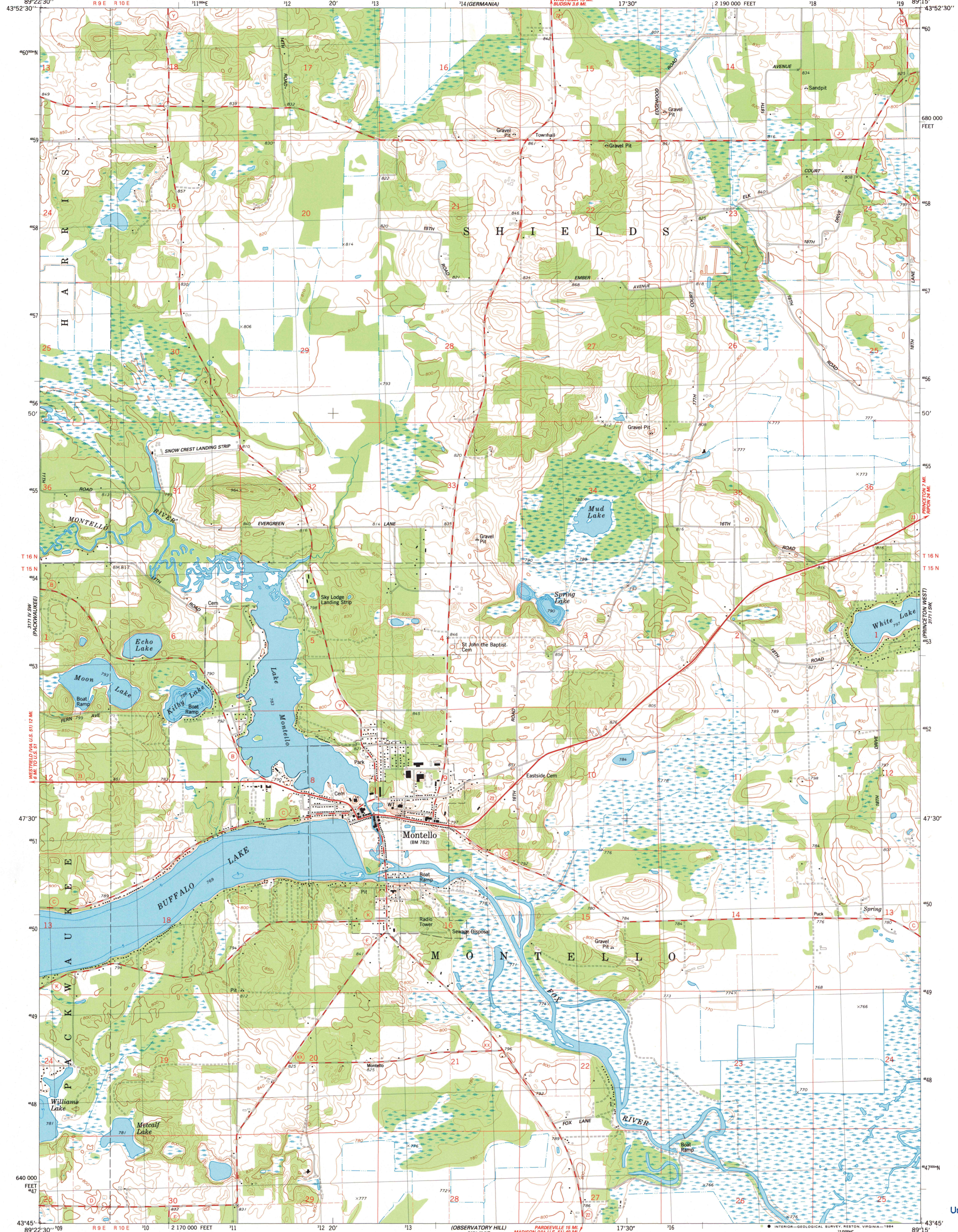
221° 15' W (WESTFIELD EAST)

UNITED STATES
DEPARTMENT OF THE INTERIOR
GEOLOGICAL SURVEY

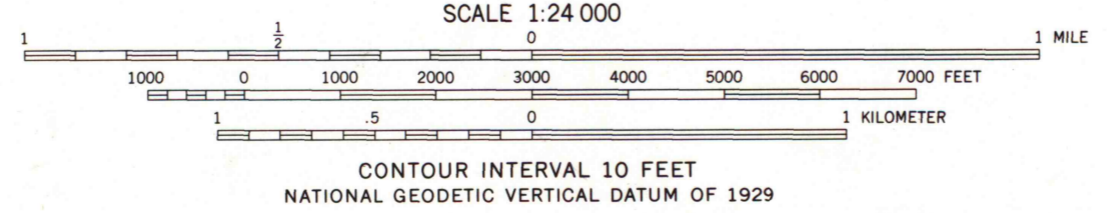
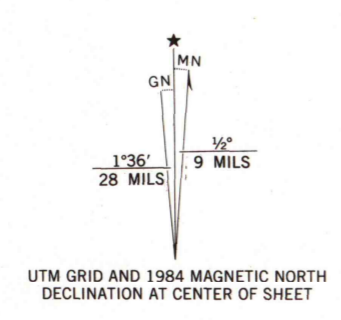
STATE OF WISCONSIN
DIVISION OF HIGHWAYS
GEOLOGICAL AND NATURAL HISTORY SURVEY

MONTELLO QUADRANGLE
WISCONSIN-MARQUETTE CO.
7.5 MINUTE SERIES (TOPOGRAPHIC)
854 MONTELLO 15' QUADRANGLE

371° 15' W (MARQUETTE)



Mapped, edited, and published by the Geological Survey in cooperation with the Wisconsin Division of Highways and Wisconsin Geological and Natural History Survey. Control by USGS and NOS/NOAA. Topography by photogrammetric methods from aerial photographs taken 1959-60. Revised from aerial photographs taken 1982. Field checked 1983. Map edited 1984. Hydrography compiled from information furnished by Wisconsin Department of Natural Resources. Projection and 10,000-foot grid ticks: Wisconsin coordinate system, south zone (Lambert conformal conic). 1000-meter Universal Transverse Mercator grid, zone 16 1927 North American Datum. To place on the predicted North American Datum 1983, move the projection lines 5 meters north and 10 meters east as shown by dashed corner ticks. Fine red dashed lines indicate selected fence and field lines where generally visible on aerial photographs. This information is unchecked.



ROAD CLASSIFICATION
Primary highway, hard surface
Secondary highway, hard surface
Light-duty road, hard or improved surface
Unimproved road
Interstate Route
U. S. Route
State Route

THIS MAP COMPLIES WITH NATIONAL MAP ACCURACY STANDARDS FOR SALE BY U. S. GEOLOGICAL SURVEY, RESTON, VIRGINIA 22092 AND WISCONSIN GEOLOGICAL AND NATURAL HISTORY SURVEY, MADISON, WISCONSIN 53706. A FOLDER DESCRIBING TOPOGRAPHIC MAPS AND SYMBOLS IS AVAILABLE ON REQUEST.

MONTELLO, WIS.
854 MONTELLO 15' QUADRANGLE
43089-G3-TF-024
1984
DMA 3171 IV SE-SERIES V861

A.H. ROBINSON
MAP LIBRARY
DEC 13 1984
University of Wisconsin
Madison

1984
COPY
1-1