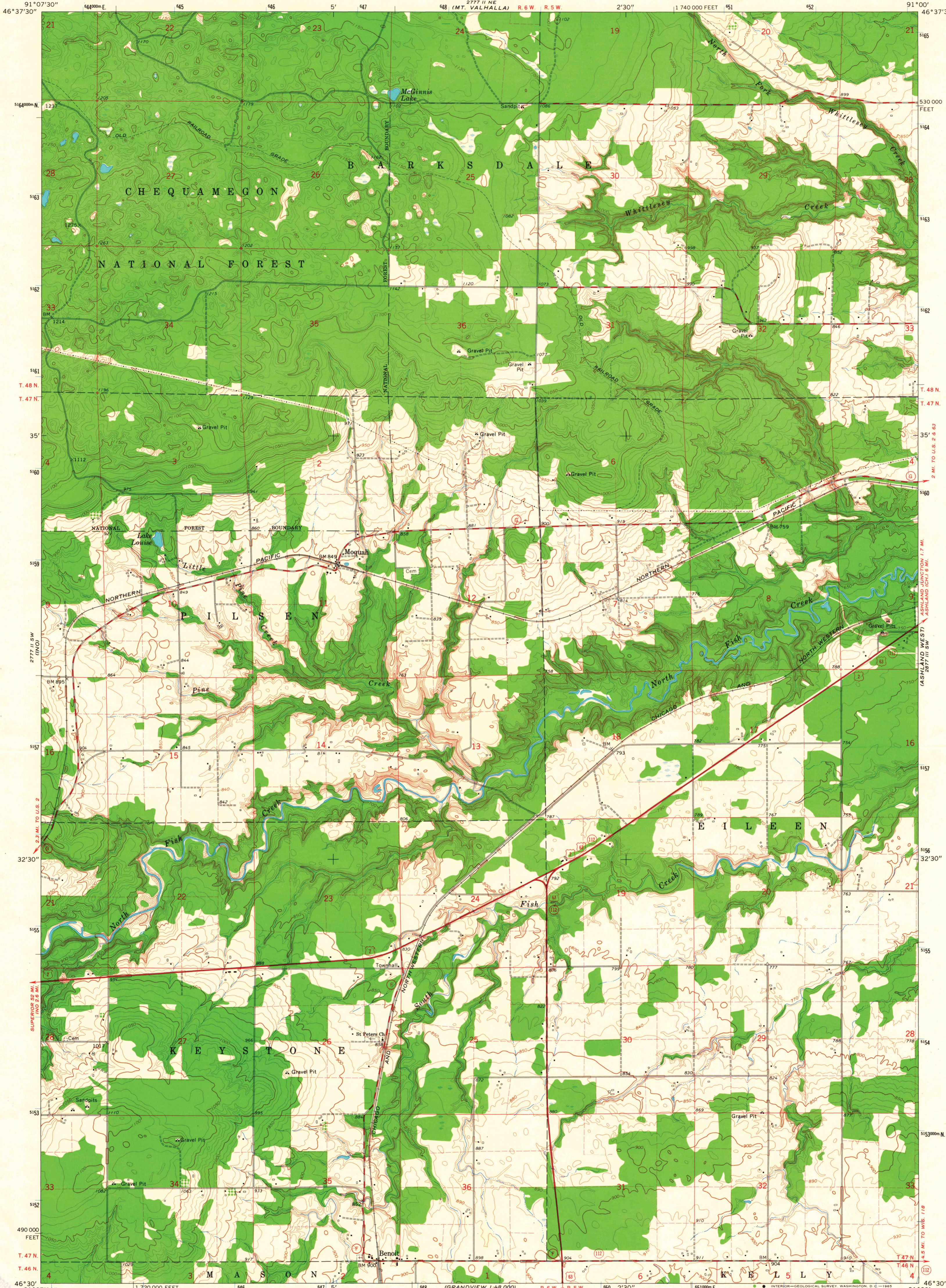
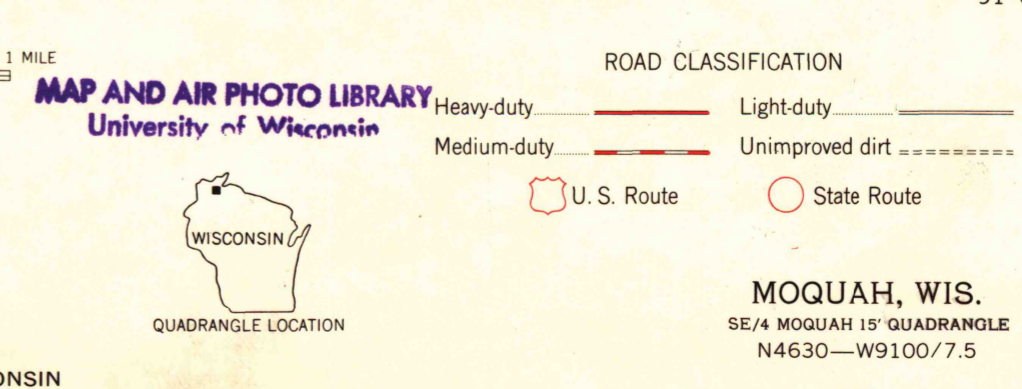
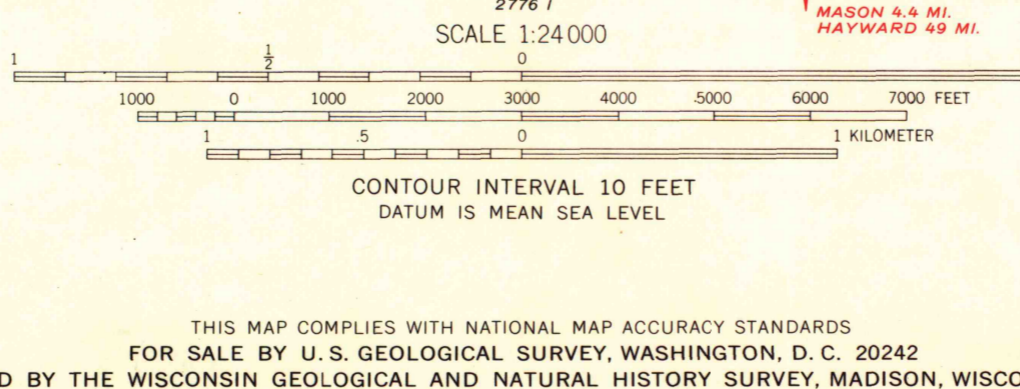
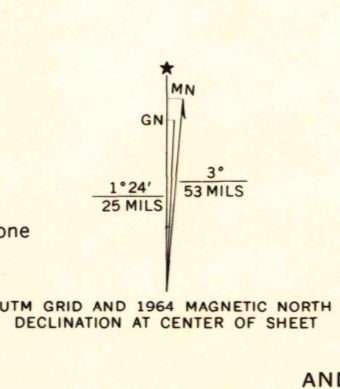


2777 II NW
(MOQUAH NW)

2877 II NW
(WASHBURN)



Maped, edited, and published by the Geological Survey in cooperation with State of Wisconsin agencies
Control by USGS and USC&GS
Topography by photogrammetric methods from aerial photographs taken 1963. Field checked 1964
Polyconic projection. 1927 North American datum
10,000-foot grid based on Wisconsin coordinate system, north zone
1000-meter Universal Transverse Mercator grid ticks, zone 15, shown in blue
Fine red dashed lines indicate selected fence and field lines where generally visible on aerial photographs
This information is unchecked



MOQUAH, WIS.
SE/4 MOQUAH 15' QUADRANGLE
N4630—W9100/7.5
1964
AMS 2777 II SE—SERIES V861

1964
Copy
1-1

(I)