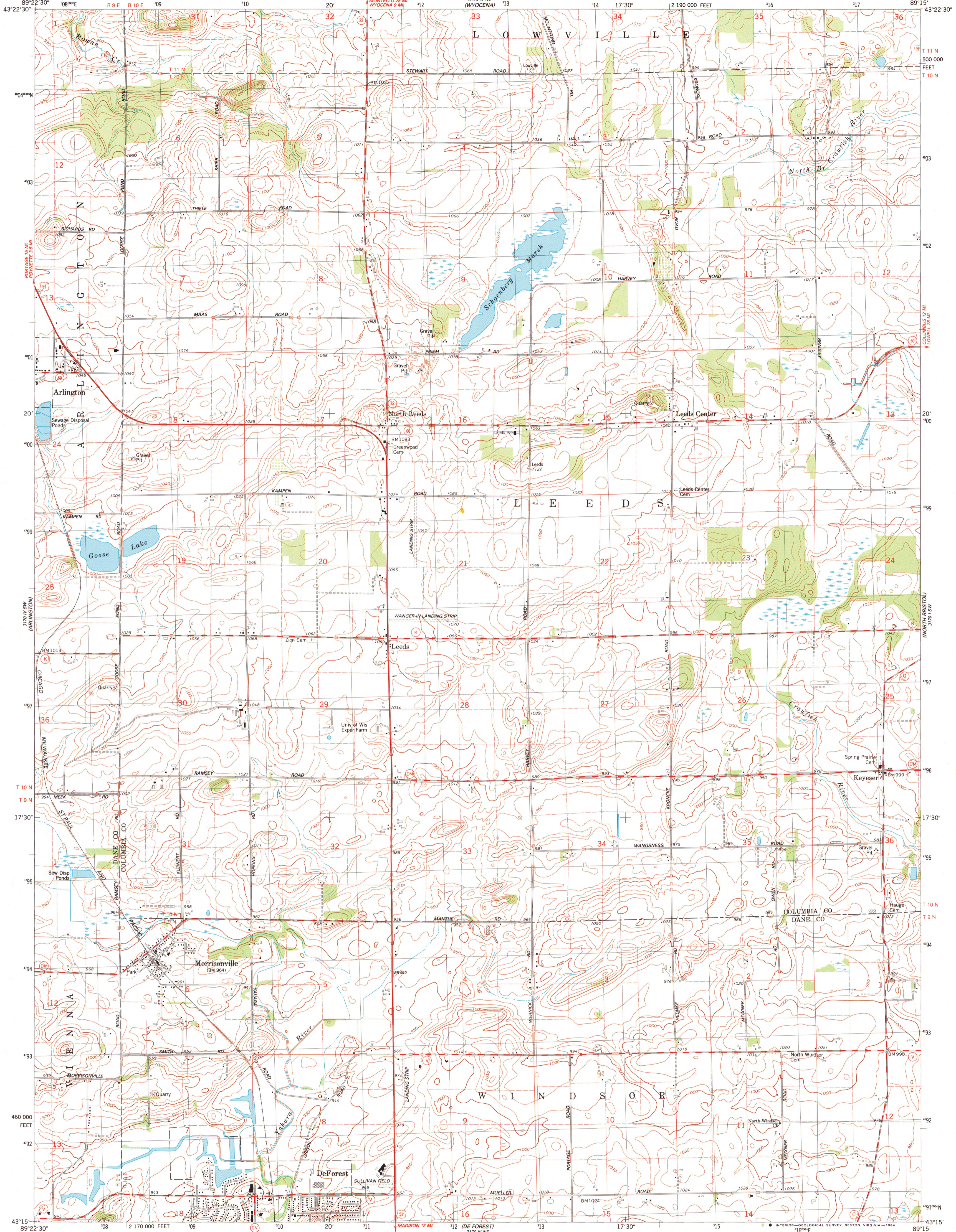
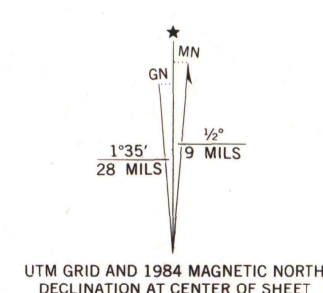


UNITED STATES
DEPARTMENT OF THE INTERIOR
GEOLOGICAL SURVEY

MORRISONVILLE QUADRANGLE
WISCONSIN
7.5 MINUTE SERIES (TOPOGRAPHIC)
SE 4 POYNETTE 15' QUADRANGLE



Mapped, edited, and published by the Geological Survey in cooperation with the Wisconsin Division of Highways and Wisconsin Geological and Natural History Survey. Control by USGS and NOS/NOAA. Topography by photogrammetric methods from aerial photographs taken 1960. Revised from aerial photographs taken 1982. Field checked 1983. Map edited 1984. Projection and 10,000-foot grid ticks: Wisconsin coordinate system, south zone (Lambert conformal conic). 1000-meter Universal Transverse Mercator grid, zone 16 1927 North American Datum. To place on the predicted North American Datum 1983, move the projection lines 4 meters north and 10 meters east as shown by dashed corner ticks. Fine red dashed lines indicate selected fence and field lines where generally visible on aerial photographs. This information is unchecked.



SCALE 1:24 000
CONTOUR INTERVAL 10 FEET
NATIONAL GEODETIC VERTICAL DATUM OF 1929



ROAD CLASSIFICATION
Primary highway, hard surface ——— Light-duty road, hard or improved surface
Secondary highway, hard surface ——— Unimproved road
Interstate Route ——— U.S. Route ——— State Route

THIS MAP COMPLIES WITH NATIONAL MAP ACCURACY STANDARDS
FOR SALE BY U.S. GEOLOGICAL SURVEY, RESTON, VIRGINIA 22092
AND WISCONSIN GEOLOGICAL AND NATURAL HISTORY SURVEY, MADISON, WISCONSIN 53706
A FOLDER DESCRIBING TOPOGRAPHIC MAPS AND SYMBOLS IS AVAILABLE ON REQUEST

1984
COPY
X
1-1

MORRISONVILLE, WIS.
SE 4 POYNETTE 15' QUADRANGLE
43089-C3-TF-024
1984
DMA 3170 IV SE-SERIES V861

U.S. Regional Depository Copy DO NOT DISCARD
A.H. ROBINSON MAP LIBRARY
JUL 16 1985
University of Wisconsin Madison