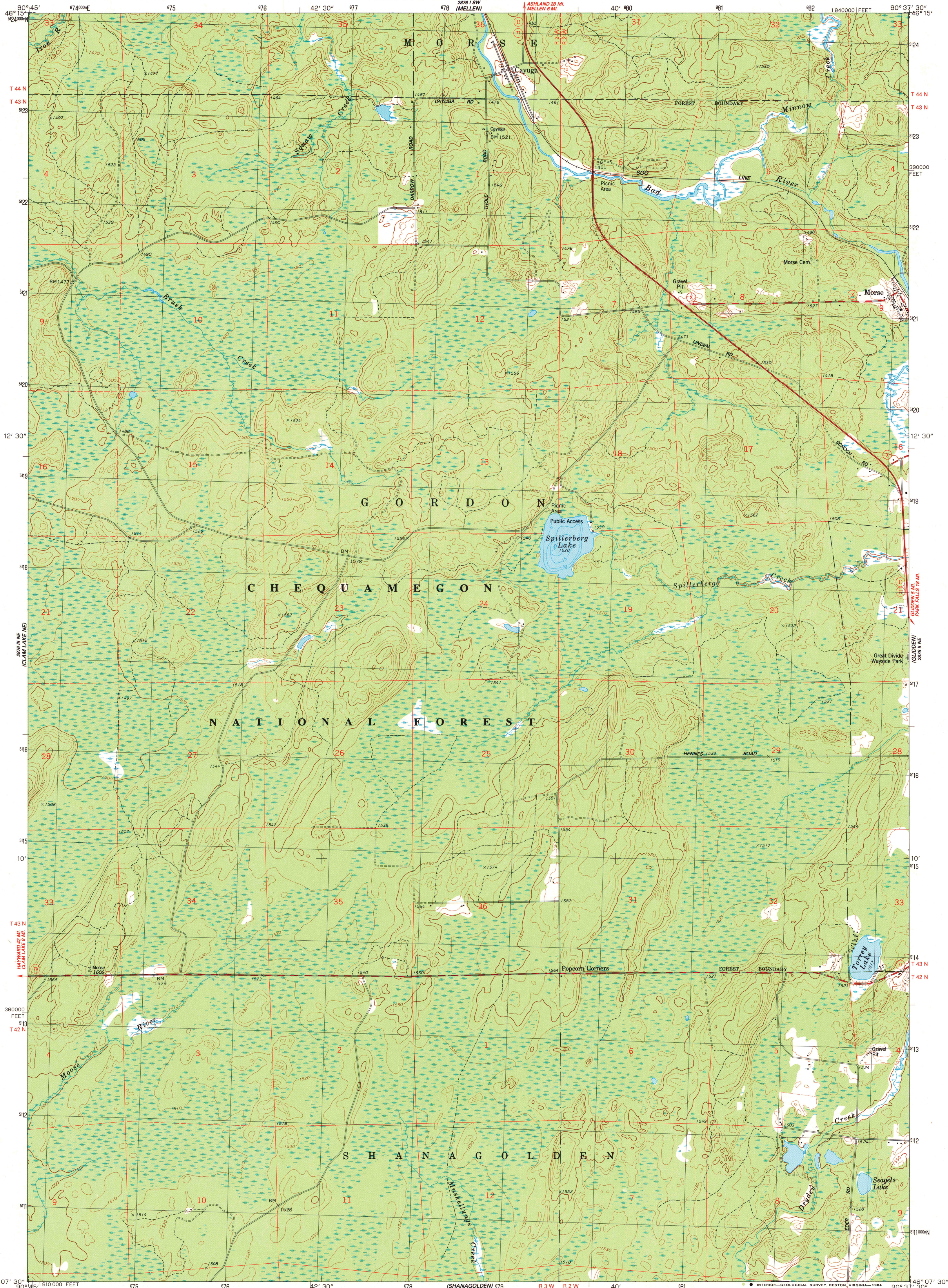


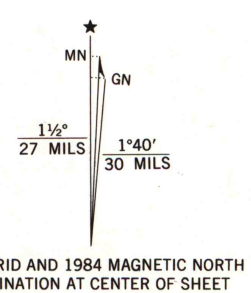
UNITED STATES  
DEPARTMENT OF THE INTERIOR  
GEOLOGICAL SURVEY

STATE OF WISCONSIN  
DIVISION OF HIGHWAYS  
GEOLOGICAL AND NATURAL HISTORY SURVEY

MORSE QUADRANGLE  
WISCONSIN-ASHLAND CO.  
7.5 MINUTE SERIES (TOPOGRAPHIC)



Maped, edited, and published by the Geological Survey in cooperation with the Wisconsin Division of Highways and Wisconsin Geological and Natural History Survey. Control by USGS and NOS/NOAA. Topography by photogrammetric methods from aerial photographs taken 1965. Revised from aerial photographs taken 1983. Field checked 1984. Map edited 1984. Hydrography compiled from information furnished by Wisconsin Department of Natural Resources. Projection and 10,000-foot grid ticks: Wisconsin coordinate system, north zone (Lambert conformal conic). 1000-meter Universal Transverse Mercator grid, zone 15 1927 North American Datum. To place on the predicted North American Datum 1983, move the projection lines 6 meters north and 11 meters east as shown by dashed corner ticks. There may be private inholdings within the boundaries of the National or State reservations shown on this map. Fine red dashed lines indicate selected fence and field lines where generally visible on aerial photographs. This information is uncheckered.



SCALE 1:24 000  
CONTOUR INTERVAL 10 FEET  
NATIONAL GEODETIC VERTICAL DATUM OF 1929

THIS MAP COMPLIES WITH NATIONAL MAP ACCURACY STANDARDS  
FOR SALE BY U. S. GEOLOGICAL SURVEY, RESTON, VIRGINIA 22092  
AND WISCONSIN GEOLOGICAL AND NATURAL HISTORY SURVEY, MADISON, WISCONSIN 53706  
A FOLDER DESCRIBING TOPOGRAPHIC MAPS AND SYMBOLS IS AVAILABLE ON REQUEST



ROAD CLASSIFICATION  
Primary highway, hard surface. Light-duty road, hard or improved surface.  
Secondary highway, hard surface. Unimproved road.  
Interstate Route. U. S. Route. State Route.

MORSE, WIS.  
NW 1/4 GLIDDEN 15' QUADRANGLE  
46090-B6-TF-024  
1984  
DMA 2876 II NW-SERIES V861

U.S. Regional  
Repository Copy  
DO NOT DISCARD  
A.H. ROBINSON  
MAP LIBRARY  
MAY 21 1985  
University of Wisconsin  
Madison