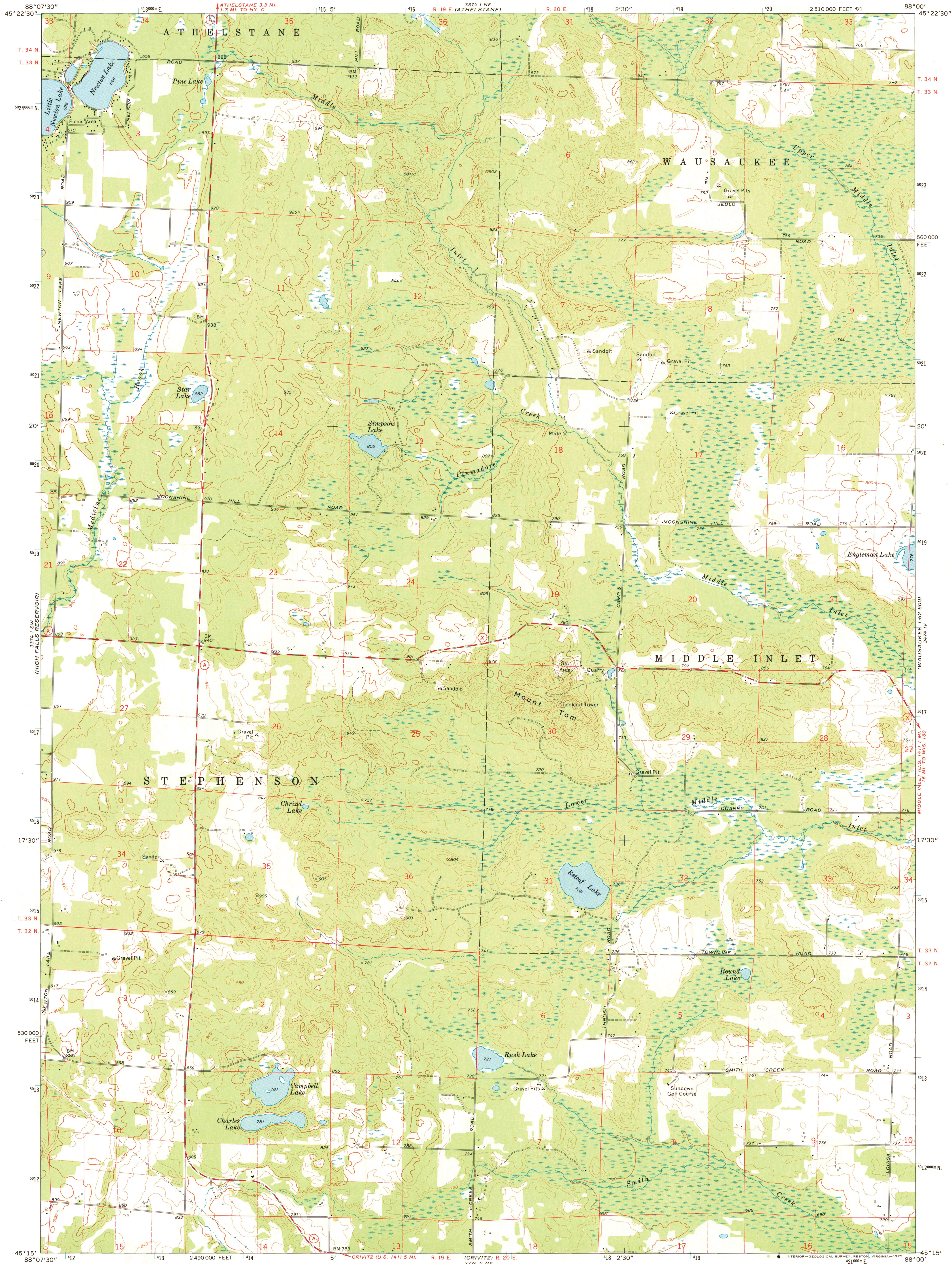


33° 17' W
LEEMAN LAKE

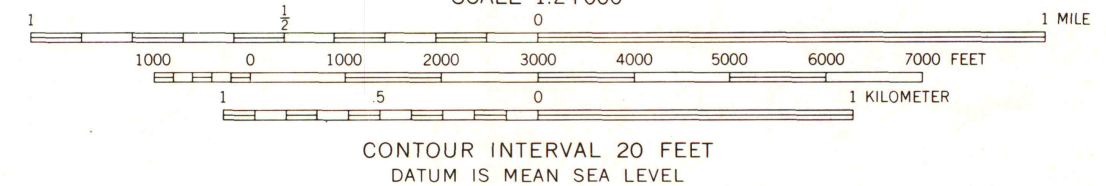
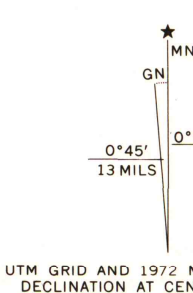
UNITED STATES
DEPARTMENT OF THE INTERIOR
GEOLOGICAL SURVEY

MOUNT TOM QUADRANGLE
WISCONSIN—MARINETTE CO.
7.5 MINUTE SERIES (TOPOGRAPHIC)
SE 1/4 ATHELSTANE 15 QUADRANGLE

37° 14' N
WAUSAUKEE 1:62,500



Mapped, edited, and published by the Geological Survey
Control by USGS and USC&GS
Topography by photogrammetric methods from aerial
photographs taken 1971. Field checked 1972
Projection and 10,000-foot grid ticks: Wisconsin coordinate
system, central zone (Lambert conformal conic)
1000-meter Universal Transverse Mercator grid ticks,
zone 16, shown in blue. 1927 North American datum
Fine red dashed lines indicate selected fence and field lines where
generally visible on aerial photographs
This information is unchecked



CONTOUR INTERVAL 20 FEET
DATUM IS MEAN SEA LEVEL



ROAD CLASSIFICATION

Primary highway, hard surface	Light-duty road, hard or improved surface
Secondary highway, hard surface	Unimproved road
Interstate Route	U. S. Route
	State Route

THIS MAP COMPLIES WITH NATIONAL MAP ACCURACY STANDARDS
FOR SALE BY U. S. GEOLOGICAL SURVEY, RESTON, VIRGINIA 22092
AND BY THE WISCONSIN GEOLOGICAL AND NATURAL HISTORY SURVEY, MADISON, WISCONSIN 53706
A FOLDER DESCRIBING TOPOGRAPHIC MAPS AND SYMBOLS IS AVAILABLE ON REQUEST

MAP AND AIR PHOTO
LIBRARY
MAY 2 1975
University of Wisconsin

37° 14' N
WHITE POTATO LAKE

37° 14' N
PORTERFIELD 1:62,500

MOUNT TOM, WIS.
SE 1/4 ATHELSTANE 15 QUADRANGLE
N4515—W8800/7.5
1972
AMS 3374 1 SE—SERIES V861

1972
copy
1-1