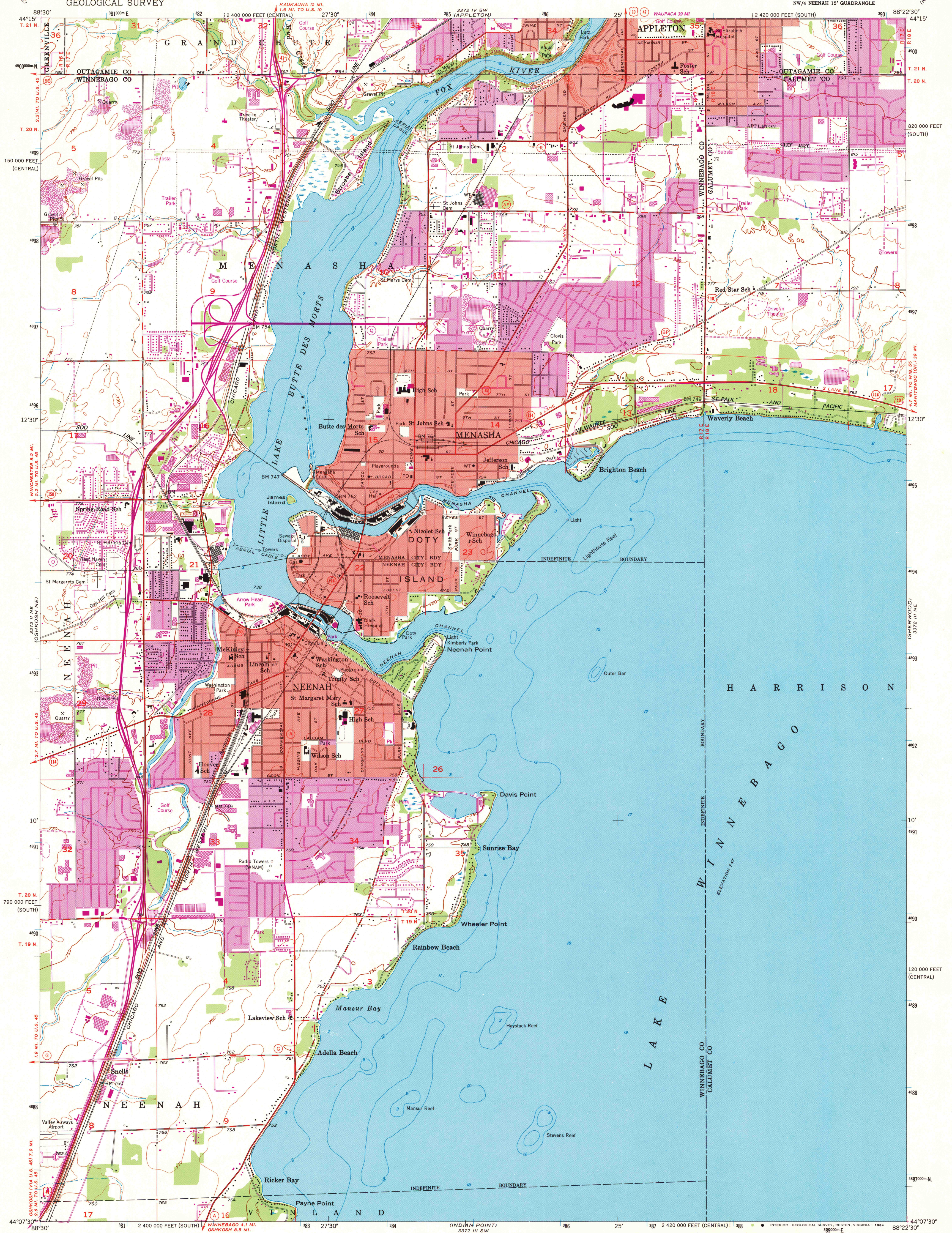
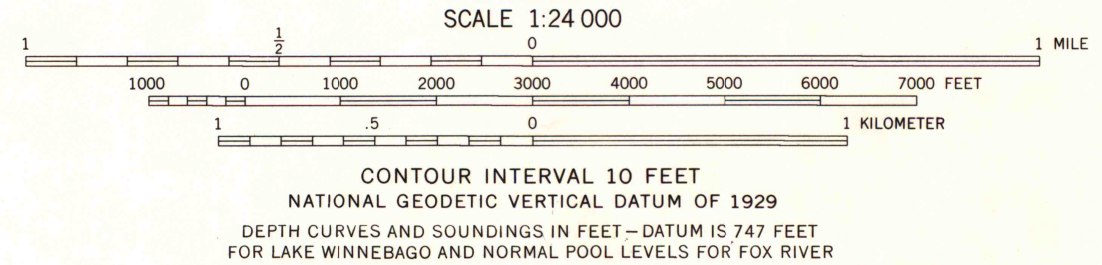
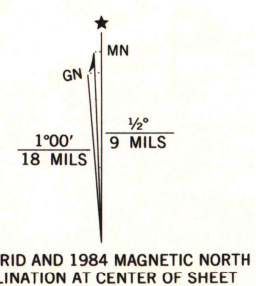


UNITED STATES
DEPARTMENT OF THE INTERIOR
GEOLOGICAL SURVEY

NEENAH QUADRANGLE
WISCONSIN
7.5 MINUTE SERIES (TOPOGRAPHIC)
NW/4 NEENAH 15' QUADRANGLE



Mapped, edited, and published by the Geological Survey
Control by USGS and USC&GS
Topography from aerial photographs by Kelsch plotter
Aerial photographs taken 1953. Field check 1955
Hydrography compiled from U.S. Lake Survey chart 726 (1951)
Polyconic projection. 1927 North American datum
10,000 foot grids based on Wisconsin coordinate system,
south and central zones
Red tint indicates areas in which only
landmark buildings are shown
1000-meter Universal Transverse Mercator grid ticks,
zone 16, shown in blue
To place on the predicted North American Datum 1983,
move the projection lines 5 meters north and
8 meters east as shown by dashed corner ticks



CONTOUR INTERVAL 10 FEET
NATIONAL GEODETIC VERTICAL DATUM OF 1929
DEPTH CURVES AND SOUNDINGS IN FEET—DATUM IS 747 FEET
FOR LAKE WINNEBAGO AND NORMAL POOL LEVELS FOR FOX RIVER
THIS MAP COMPLIES WITH NATIONAL MAP ACCURACY STANDARDS
FOR SALE BY U.S. GEOLOGICAL SURVEY, RESTON, VIRGINIA 22092
AND WISCONSIN GEOLOGICAL AND NATURAL HISTORY SURVEY, MADISON, WISCONSIN 53706
A FOLDER DESCRIBING TOPOGRAPHIC MAPS AND SYMBOLS IS AVAILABLE ON REQUEST



ROAD CLASSIFICATION
Primary highway, hard surface
Secondary highway, hard surface
Unimproved road
Interstate Route
U.S. Route
State Route

NEENAH, WIS.
NW/4 NEENAH 15' QUADRANGLE
44088-B4-TF-024
1955
PHOTOREVISED 1984
DMA 3372 III NW—SERIES Y861

1984
COPY
1-1

A.H. ROBINSON
MAP LIBRARY
APR 29 1985
University of Wisconsin
Madison
U.S. Regional
Depository Copy
DO NOT DISCARD