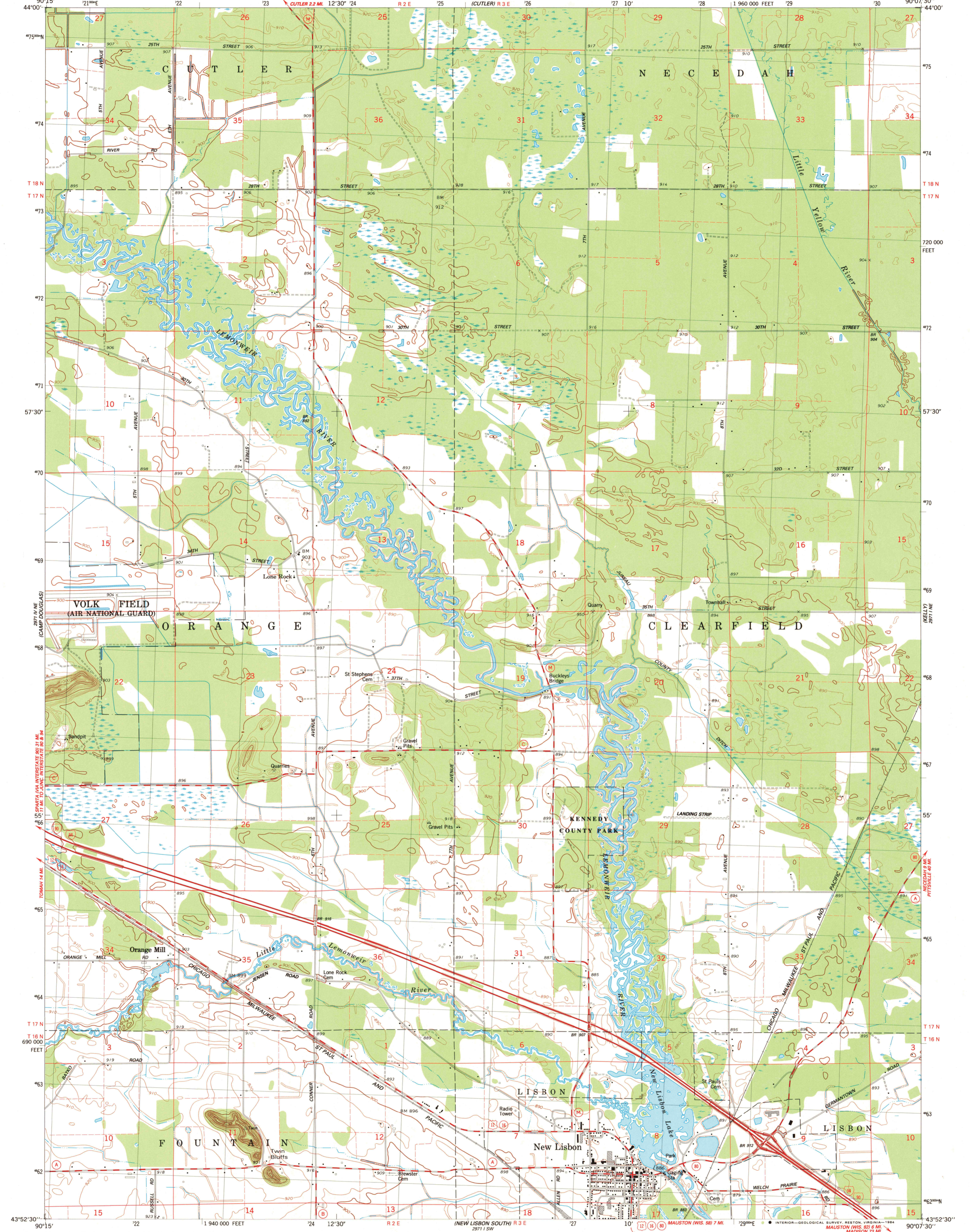
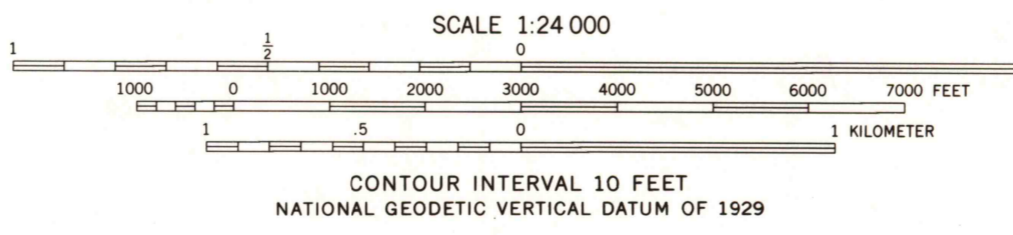
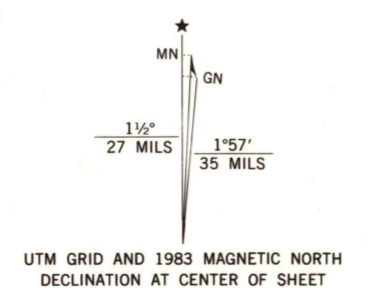


UNITED STATES  
DEPARTMENT OF THE INTERIOR  
GEOLOGICAL SURVEY

NEW LISBON NORTH QUADRANGLE  
WISCONSIN-JUNEAU CO.  
7.5 MINUTE SERIES (TOPOGRAPHIC)  
NW/4 MAUSTON 15' QUADRANGLE



Mapped, edited, and published by the Geological Survey in cooperation with the Wisconsin Division of Highways and Wisconsin Geological and Natural History Survey Control by USGS and NOS/NOAA  
Topography by photogrammetric methods from aerial photographs taken 1961. Revised from aerial photographs taken 1983. Map edited 1983  
Projection and 10,000-foot grid ticks: Wisconsin coordinate system, south zone (Lambert conformal conic)  
1000-meter Universal Transverse Mercator grid, zone 15 1927 North American Datum  
To place on the predicted North American Datum 1983, move the projection lines 6 meters north and 11 meters east as shown by dashed corner ticks  
There may be private inholdings within the boundaries of the National or State reservations shown on this map  
Fine red dashed lines indicate selected fence and field lines where generally visible on aerial photographs. This information is unchecked



ROAD CLASSIFICATION

Primary highway, hard surface	Light-duty road, hard or improved surface
Secondary highway, hard surface	Unimproved road
Interstate Route	U. S. Route
	State Route

NEW LISBON NORTH, WIS.  
NW/4 MAUSTON 15' QUADRANGLE  
N4352.5-W5007.5/7.5

1983

DMA 2971 1 NW-SERIES V861

THIS MAP COMPLIES WITH NATIONAL MAP ACCURACY STANDARDS FOR SALE BY U. S. GEOLOGICAL SURVEY, RESTON, VIRGINIA 22092 AND WISCONSIN GEOLOGICAL AND NATURAL HISTORY SURVEY, MADISON, WISCONSIN 53706 A FOLDER DESCRIBING TOPOGRAPHIC MAPS AND SYMBOLS IS AVAILABLE ON REQUEST

RETURN TO:  
USGS AND HISTORICAL MAP ARCHIVES