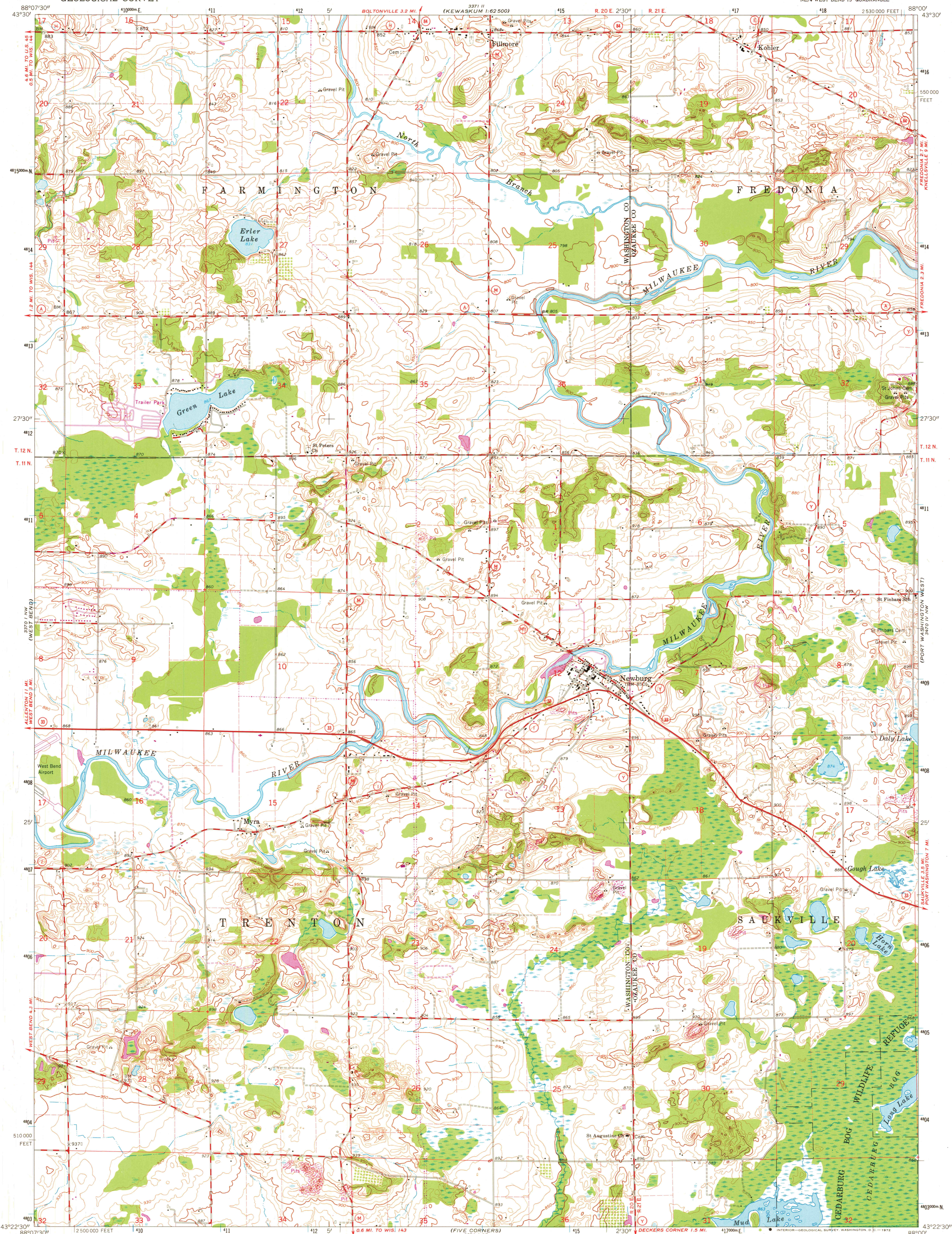
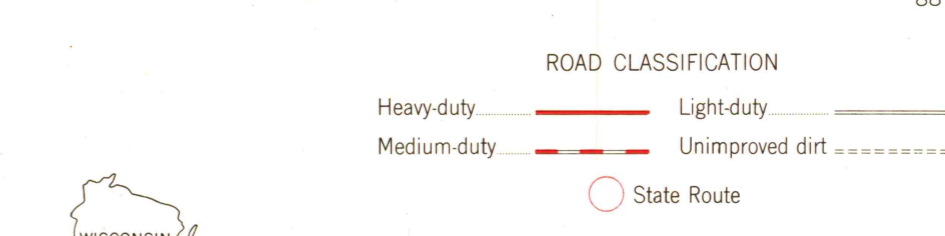
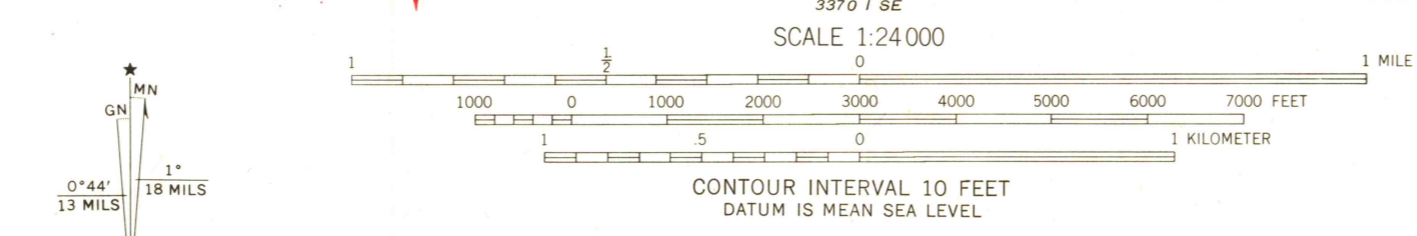


UNITED STATES  
DEPARTMENT OF THE INTERIOR  
GEOLOGICAL SURVEY

NEWBURG QUADRANGLE  
WISCONSIN  
7.5 MINUTE SERIES (TOPOGRAPHIC)  
NE/4 WEST BEND 15' QUADRANGLE



Maped, edited, and published by the Geological Survey  
Control by USGS and USC&GS  
Topography by photogrammetric methods from aerial  
photographs taken 1954-55. Field checked 1959  
Polyconic projection. 1927 North American datum  
10,000-foot grid based on Wisconsin coordinate system, south zone  
1000-meter Universal Transverse Mercator grid ticks,  
zone 16, shown in blue  
Fine red dashed lines indicate selected fence and field lines where  
generally visible on aerial photographs. This information is unchecked  
Revisions shown in purple compiled from aerial photographs  
taken 1971. This information not field checked



USGS  
HISTORICAL FILE  
TOPOGRAPHIC DIVISION

NEWBURG, WIS.  
NE/4 WEST BEND 15' QUADRANGLE  
N4322.5-W8800.7.5  
1959  
PHOTOREVISED 1971  
AMS 3370 1 NE-SERIES V861

DEC 12 1972  
3175