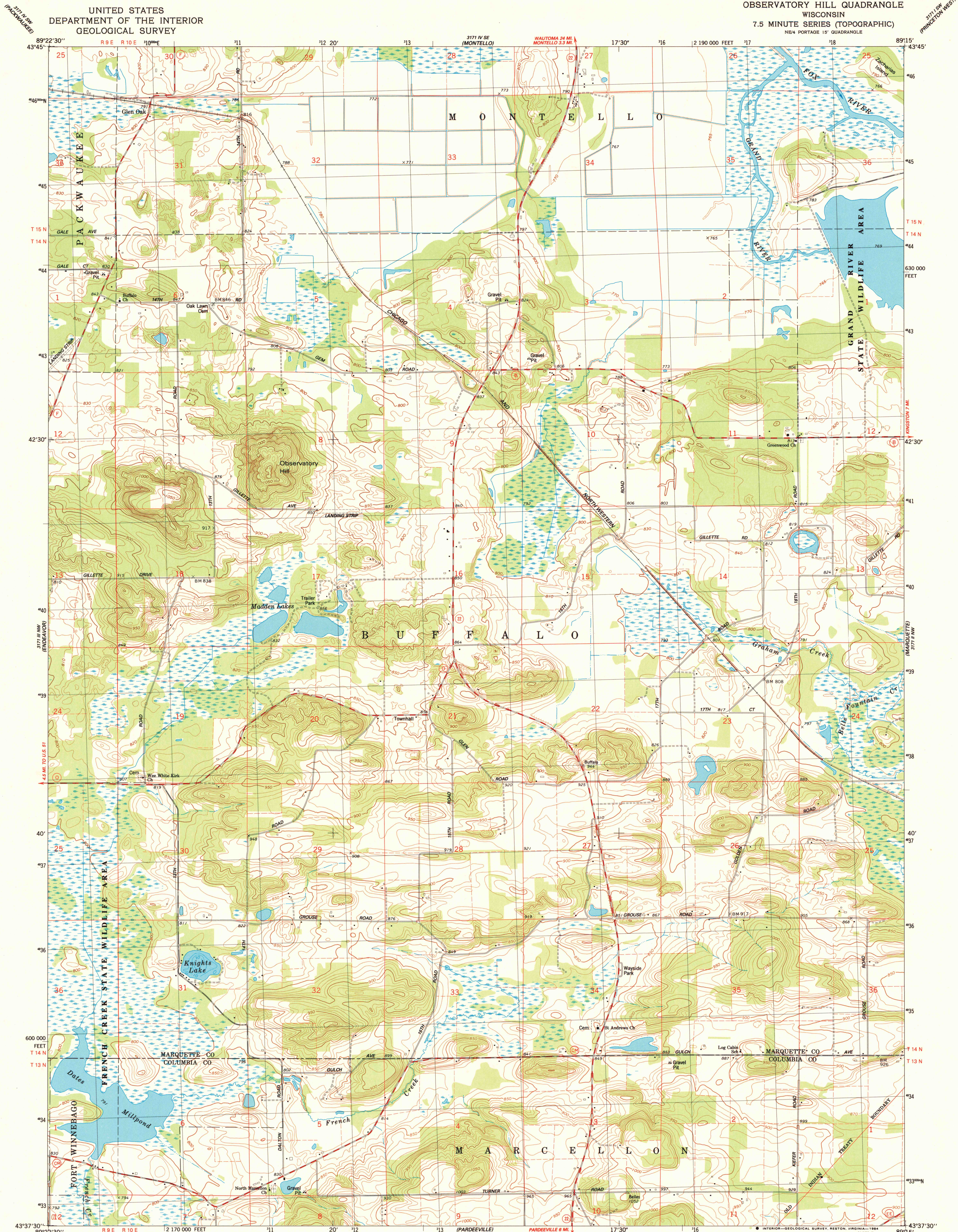
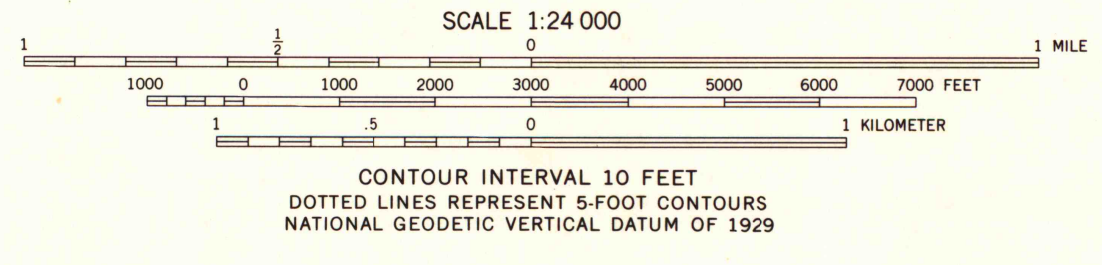
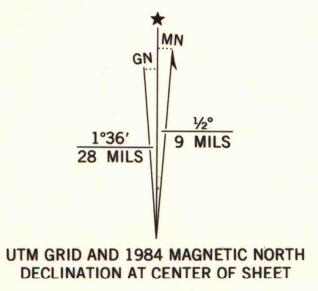


UNITED STATES
DEPARTMENT OF THE INTERIOR
GEOLOGICAL SURVEY

OBSERVATORY HILL QUADRANGLE
WISCONSIN
7.5 MINUTE SERIES (TOPOGRAPHIC)



Maped, edited, and published by the Geological Survey in cooperation with the Wisconsin Division of Highways and Wisconsin Geological and Natural History Survey. Control by USGS and NOS/NOAA. Topography by photogrammetric methods from aerial photographs taken 1960. Revised from aerial photographs taken 1962. Field checked 1983. Map edited 1984. Hydrography compiled from information furnished by Wisconsin Department of Natural Resources. Projection and 10,000-foot grid ticks: Wisconsin coordinate system, south zone (Lambert conformal conic). 1000-meter Universal Transverse Mercator grid, zone 16 1927 North American Datum. To place on the predicted North American Datum 1983, move the projection lines 5 meters north and 10 meters east as shown by dashed corner ticks. There may be private inholdings within the boundaries of the National or State reservations shown on this map. Fine red dashed lines indicate selected fence and field lines where generally visible on aerial photographs. This information is unchecked.



SCALE 1:24 000
CONTOUR INTERVAL 10 FEET
DOTTED LINES REPRESENT 5-FOOT CONTOURS
NATIONAL GEODETIC VERTICAL DATUM OF 1929



ROAD CLASSIFICATION

Primary highway, hard surface	Light-duty road, hard or improved surface
Secondary highway, hard surface	Unimproved road
Interstate Route	U.S. Route
	State Route

OBSERVATORY HILL, WIS.
NE/4 PORTAGE 15' QUADRANGLE
43089-F3-TF-024

1984
DMA 3171 III NE-SERIES V861

1994 COPY 1-1

A.H. ROBINSON
MAP LIBRARY
AUG 19 1985
University of Wisconsin
Madison