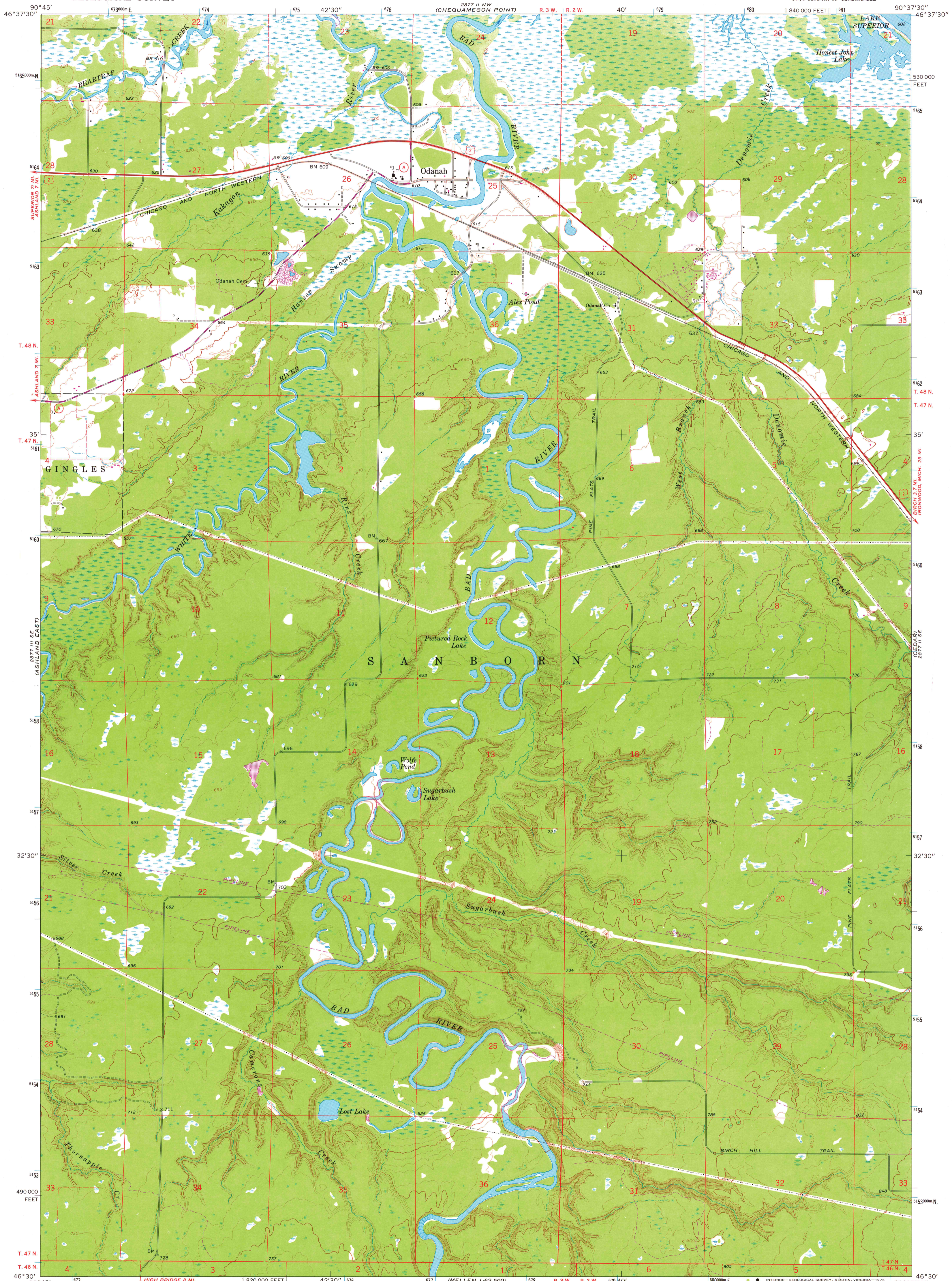


UNITED STATES
DEPARTMENT OF THE INTERIOR
GEOLOGICAL SURVEY

ODANAH QUADRANGLE
WISCONSIN-ASHLAND CO.
7.5 MINUTE SERIES (TOPOGRAPHIC)
SW/4 ODANAH 15' QUADRANGLE



Mapped, edited, and published by the Geological Survey in cooperation with State of Wisconsin Agencies

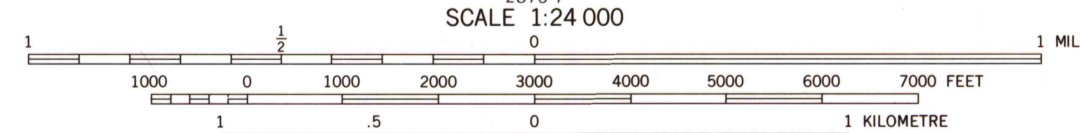
Control by USGS and USC&GS

Topography by photogrammetric methods from aerial photographs taken 1963. Field checked 1964

Selected hydrographic data compiled from U.S. Lake Survey Chart 961 (1961). This information is not intended for navigational purposes

Polyconic projection. 1927 North American datum 10,000-foot grid based on Wisconsin coordinate system, north zone 1000-metre Universal Transverse Mercator grid ticks, zone 15, shown in blue

Fine red dashed lines indicate selected fence and field lines where generally visible on aerial photographs. This information is unchecked



CONTOUR INTERVAL 10 FEET
DOTTED LINES REPRESENT 5-FOOT CONTOURS
NATIONAL GEODETIC DATUM OF 1929
DEPTH CURVES AND SOUNDINGS IN FEET—DATUM IS LOW WATER 601.6 FEET

THIS MAP COMPLIES WITH NATIONAL MAP ACCURACY STANDARDS FOR SALE BY U.S. GEOLOGICAL SURVEY, RESTON, VIRGINIA 22092 AND WISCONSIN GEOLOGICAL AND NATURAL HISTORY SURVEY, MADISON, WISCONSIN 53706 A FOLDER DESCRIBING TOPOGRAPHIC MAPS AND SYMBOLS IS AVAILABLE ON REQUEST

Revisions shown in purple compiled from aerial photographs taken 1975. This information not field checked

ROAD CLASSIFICATION
Heavy-duty ——— Light-duty ———
Unimproved dirt ———
U.S. Route ——— State Route ———

USGS
Historical File
Topographic Division

1964
PHOTOREVISED 1975
AMS 2877 II SW—SERIES V861

APR 12 1977

3150