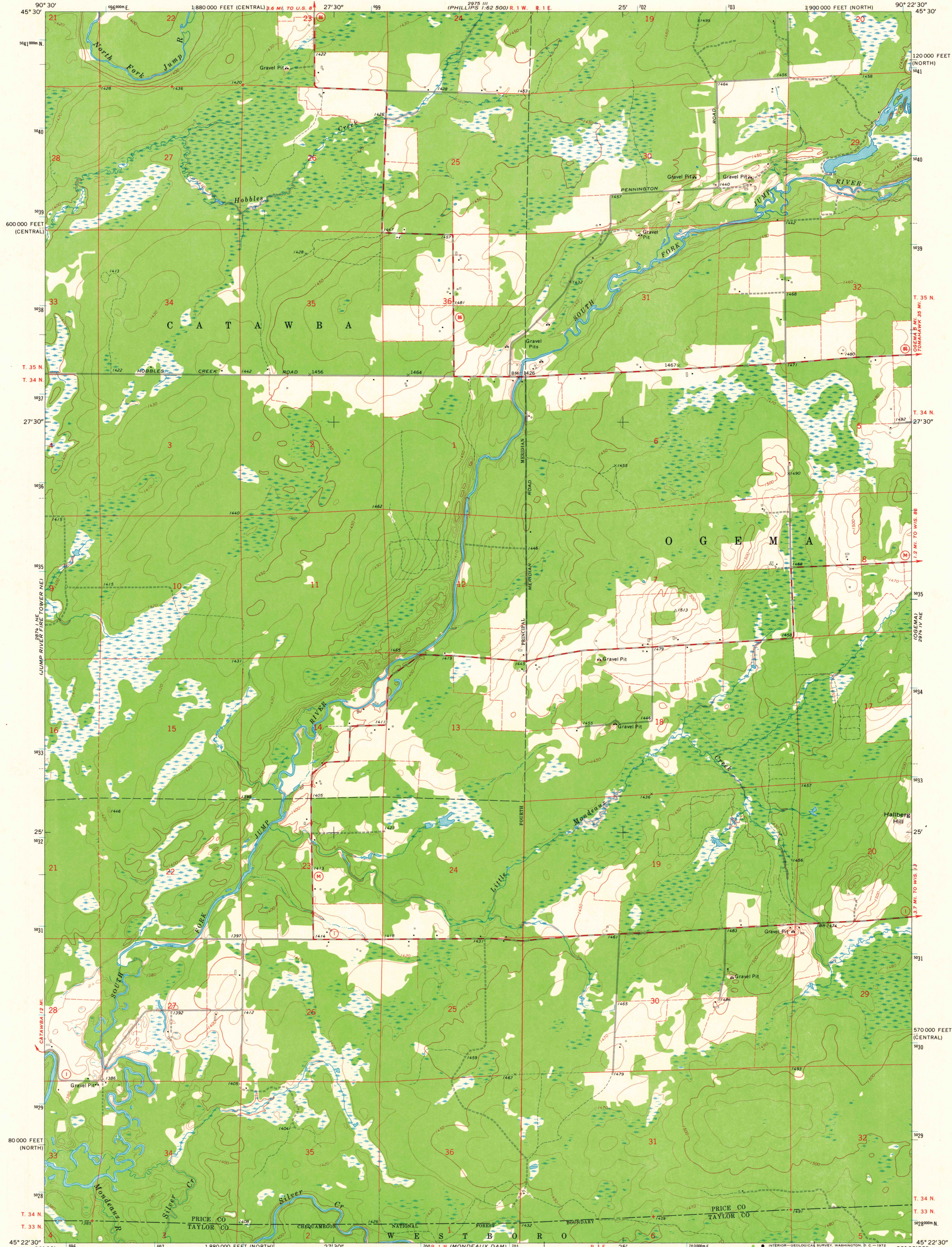


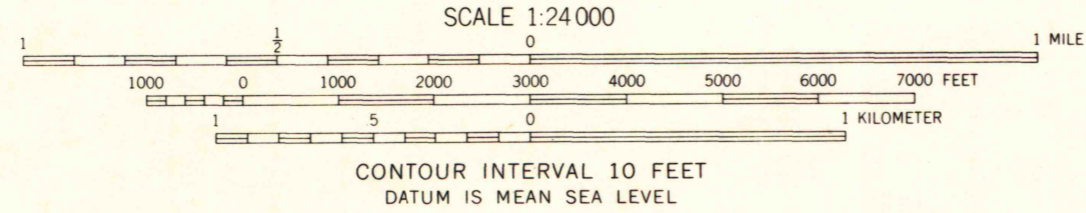
UNITED STATES  
DEPARTMENT OF THE INTERIOR  
GEOLOGICAL SURVEY

OGEMA NW QUADRANGLE  
WISCONSIN  
7.5 MINUTE SERIES (TOPOGRAPHIC)



Mapped, edited, and published by the Geological Survey

Control by USGS and USC&GS  
Topography by photogrammetric methods from aerial photographs taken 1965. Field checked 1970  
Polyconic projection. 1927 North American datum  
10,000-foot grids based on Wisconsin coordinate system, north and central zones  
1000-meter Universal Transverse Mercator grid ticks, zone 15, shown in blue  
Fine red dashed lines indicate selected fence and field lines where generally visible on aerial photographs. This information is unchecked



CONTOUR INTERVAL 10 FEET  
DATUM IS MEAN SEA LEVEL

ROAD CLASSIFICATION  
Secondary highway, all weather, Light-duty road, all weather, improved surface, hard surface  
Unimproved road, fair or dry weather  
State Route



OGEMA NW, WIS.  
NW 1/4 OGEMA 15' QUADRANGLE  
N4522.5-W9022.5/7.5

AUG 17 1972

University of Wisconsin

1970  
AMS 2974 IV NW-SERIES V861

THIS MAP COMPLIES WITH NATIONAL MAP ACCURACY STANDARDS  
FOR SALE BY U. S. GEOLOGICAL SURVEY, WASHINGTON, D. C. 20242  
AND BY THE WISCONSIN GEOLOGICAL AND NATURAL HISTORY SURVEY, MADISON, WISCONSIN 53706  
A FOLDER DESCRIBING TOPOGRAPHIC MAPS AND SYMBOLS IS AVAILABLE ON REQUEST

1970 Copy 1-1