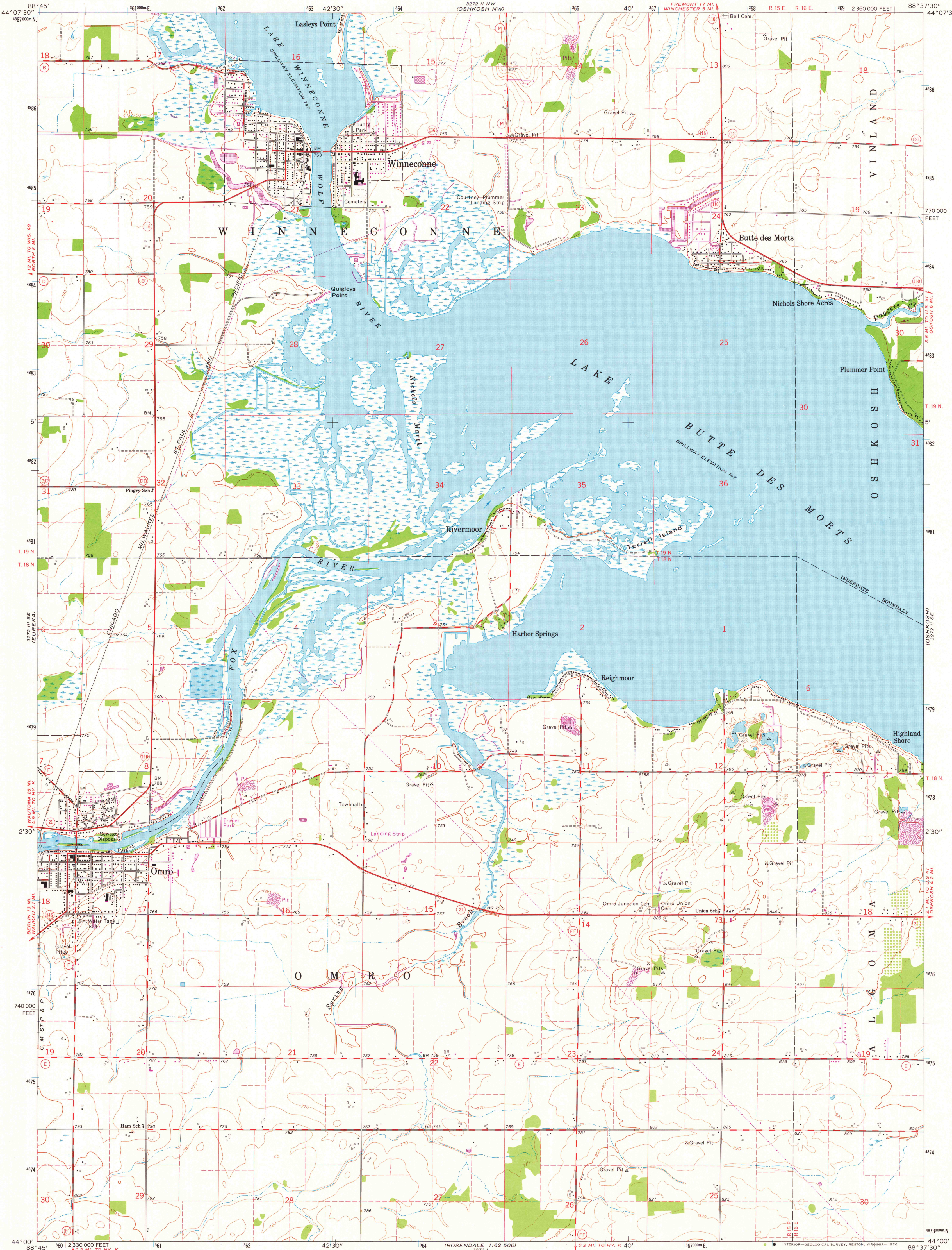


UNITED STATES
DEPARTMENT OF THE INTERIOR
GEOLOGICAL SURVEY

OMRO QUADRANGLE
WISCONSIN—WINNEBAGO CO.
7.5 MINUTE SERIES (TOPOGRAPHIC)
SW/4 OSHKOSH 15' QUADRANGLE

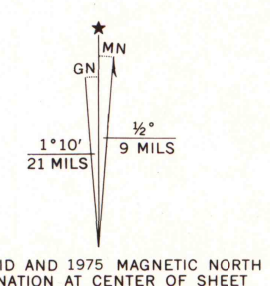


Maped, edited, and published by the Geological Survey
in cooperation with Wisconsin Highway Commission
and Wisconsin Geological and Natural History Survey
Control by USGS and USC&GS

Topography by photogrammetric methods from aerial
photographs taken 1960. Field checked 1961
Polyconic projection. 1927 North American datum
10,000-foot grid based on Wisconsin coordinate system, south zone
1000-metre Universal Transverse Mercator grid ticks,
zone 16, shown in blue

Fine red dashed lines indicate selected fence and field lines where
generally visible on aerial photographs. This information is unchecked

Revisions shown in purple compiled from aerial photographs
taken 1975. This information not field checked



SCALE 1:24,000
CONTOUR INTERVAL 10 FEET
NATIONAL GEODETIC VERTICAL DATUM OF 1929

THIS MAP COMPLIES WITH NATIONAL MAP ACCURACY STANDARDS
FOR SALE BY U.S. GEOLOGICAL SURVEY, RESTON, VIRGINIA 22092
AND BY THE WISCONSIN GEOLOGICAL AND NATURAL HISTORY SURVEY, MADISON, WISCONSIN 53706
A FOLDER DESCRIBING TOPOGRAPHIC MAPS AND SYMBOLS IS AVAILABLE ON REQUEST



ROAD CLASSIFICATION
Heavy-duty ——— Light-duty ———
Medium-duty ——— Unimproved dirt ———
State Route ———

OMRO, WIS.
SW/4 OSHKOSH 15' QUADRANGLE
N4400—W8837.5/7.5

1961
PHOTOGRAPHED 1975
AMS 3272 II SW—SERIES V861

MAP AND AIR PHOTO
LIBRARY

APR 11 1977

University of Wisconsin
Madison

1975
copy
1-1