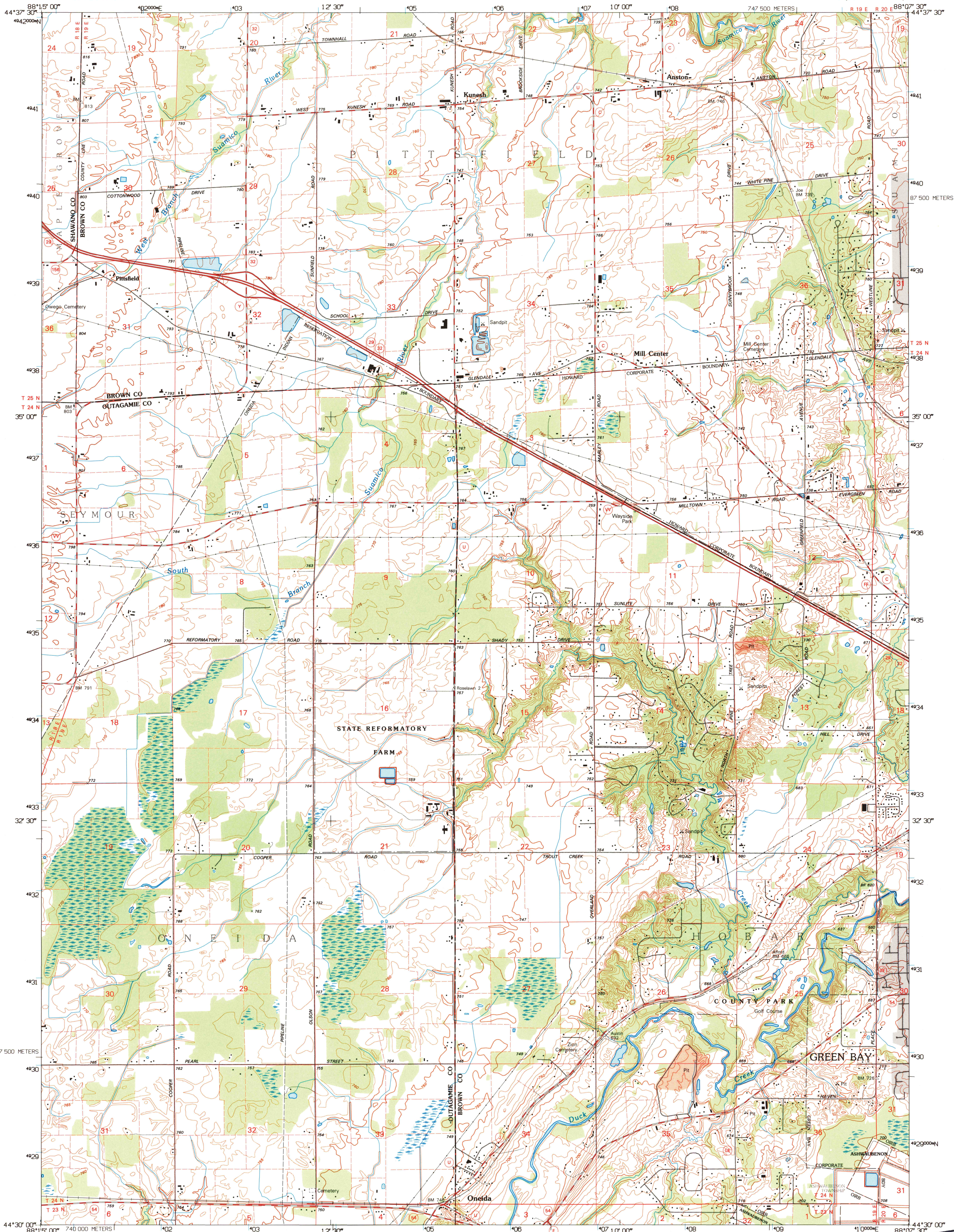


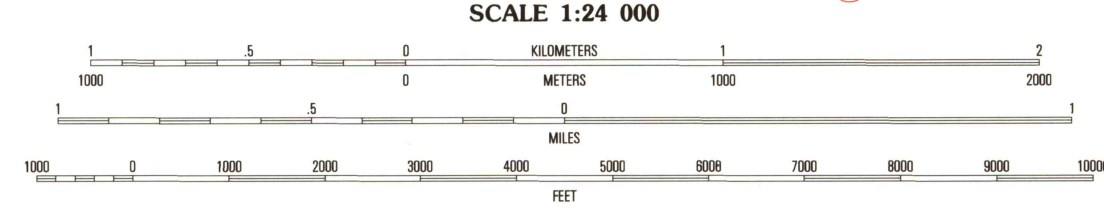
UNITED STATES
DEPARTMENT OF THE INTERIOR
GEOLOGICAL SURVEY

ONEIDA NORTH QUADRANGLE
WISCONSIN
7.5-MINUTE SERIES (TOPOGRAPHIC)



Produced by the United States Geological Survey
Compiled from imagery dated 1973. Revised from imagery dated 1992. PLSS and survey control current as of 1974. Contours and elevations current as of 1973. Map edited 1995.
North American Datum of 1983 (NAD 83). Projection and blue 1000-meter ticks: Universal Transverse Mercator, zone 16. 2500-meter ticks: Wisconsin Coordinate System of 1983 (central zone).
North American Datum of 1927 (NAD 27) is shown by dashed corner ticks. The values of the shift between NAD 83 and NAD 27 for 7.5-minute intersections are obtainable from National Geodetic Survey NADCON software.
There may be private inholdings within the boundaries of the National or State reservations shown on this map.

UTM GRID AND 1995 MAGNETIC NORTH DECLINATION AT CENTER OF SHEET



CONTOUR INTERVAL 10 FEET
SUPPLEMENTARY CONTOUR INTERVAL 5 FEET
NATIONAL GEODETIC VERTICAL DATUM OF 1929

THIS MAP COMPLIES WITH NATIONAL MAP ACCURACY STANDARDS
FOR SALE BY U.S. GEOLOGICAL SURVEY, DENVER, COLORADO 80225, OR RESTON, VIRGINIA 22092
AND WISCONSIN GEOLOGICAL AND NATURAL HISTORY SURVEY, MADISON, WISCONSIN 53706
A FOLDER DESCRIBING TOPOGRAPHIC MAPS AND SYMBOLS IS AVAILABLE ON REQUEST



QUADRANGLE LOCATION

1	2	3
4	5	6
7	8	

1 Zachow
2 Pulaski
3 Suamico
4 Seymour
5 Green Bay West
6 Freedom
7 Oneida South
8 De Pere

ROAD CLASSIFICATION
Primary highway Light-duty road, hard or hard surface
Secondary highway Improved surface
Unimproved road
Interstate Route U.S. Route State Route

ONEIDA NORTH, WI
44088-E2-TF-024
1992
DMA 3373 II SW-SERIES V861

USGS AND HISTORICAL MAP ARCHIVES
MAY 21 1996
REC'D FILE COPY

ISBN 0-607-64779-4
9 780607 647796