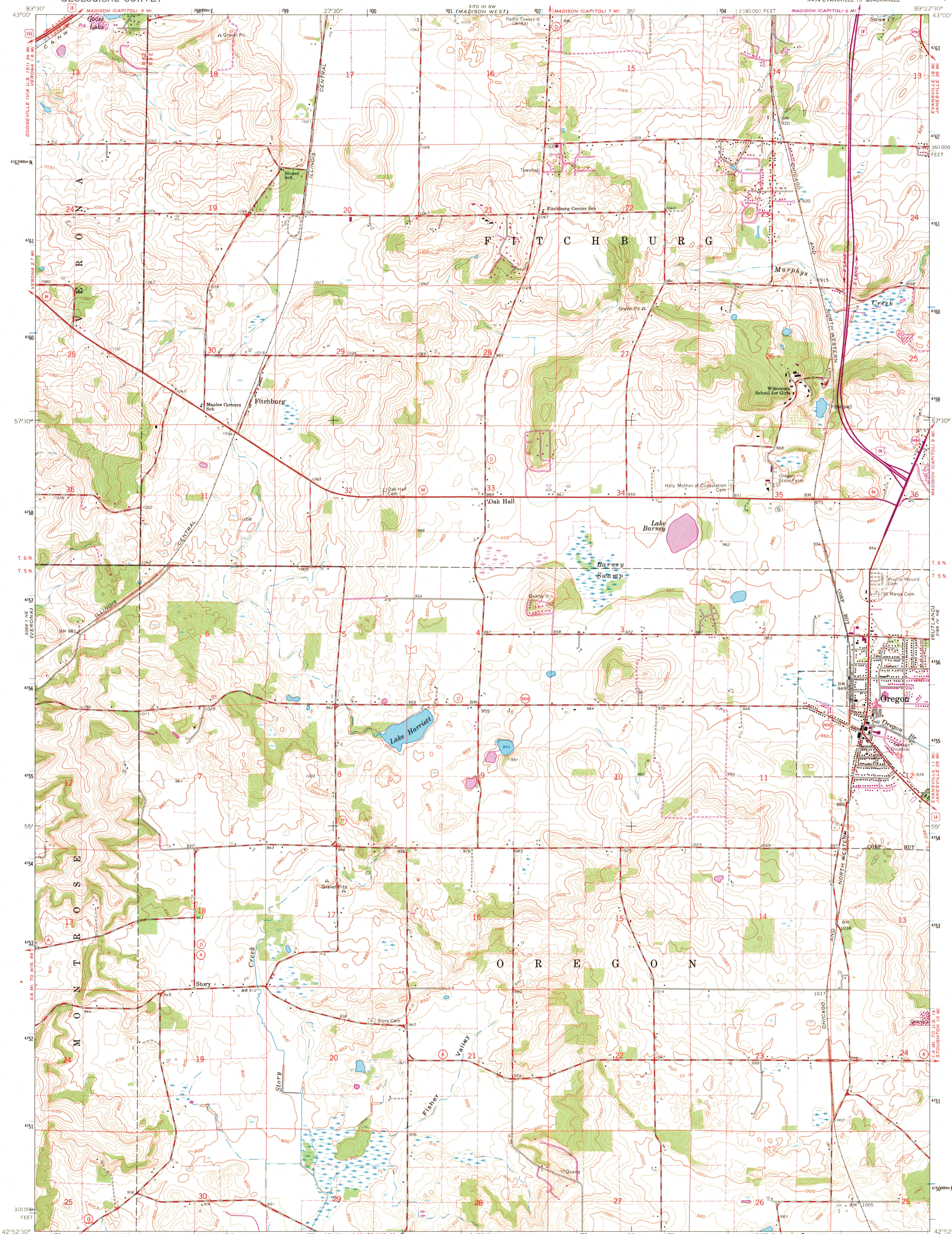
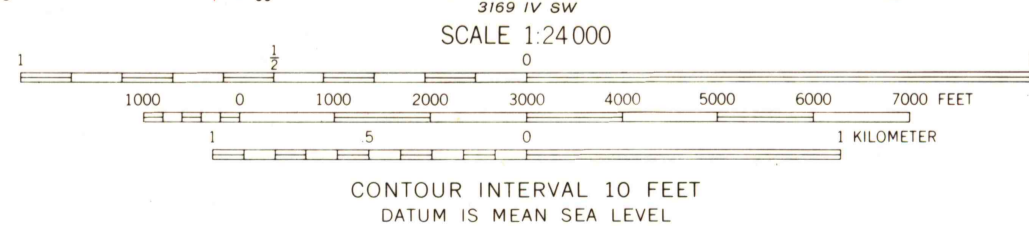


UNITED STATES
DEPARTMENT OF THE INTERIOR
GEOLOGICAL SURVEY

OREGON QUADRANGLE
WISCONSIN-DANE CO.
7.5 MINUTE SERIES (TOPOGRAPHIC)
NW/4 EVANSVILLE 15' QUADRANGLE



Mapped, edited, and published by the Geological Survey
in cooperation with State of Wisconsin agencies
Control by USGS and USC&GS
Topography by photogrammetric methods from aerial
photographs taken 1960. Field checked 1961
Polyconic projection. 1927 North American datum
10,000-foot grid based on Wisconsin coordinate system, south zone
1000-meter Universal Transverse Mercator grid ticks,
zone 16, shown in blue
Fine red dashed lines indicate selected fence and field lines where
generally visible on aerial photographs. This information is unchecked
Revisions shown in purple compiled from aerial photographs
taken 1969. This information not field checked



THIS MAP COMPLIES WITH NATIONAL MAP ACCURACY STANDARDS
FOR SALE BY U. S. GEOLOGICAL SURVEY, WASHINGTON, D. C. 20242
AND BY THE WISCONSIN GEOLOGICAL AND NATURAL HISTORY SURVEY, MADISON, WISCONSIN 53706
A FOLDER DESCRIBING TOPOGRAPHIC MAPS AND SYMBOLS IS AVAILABLE ON REQUEST

ROAD CLASSIFICATION
Heavy-duty ——— Light-duty ———
Medium-duty ——— Unimproved dirt ———
U. S. Route ——— State Route ———



U.S.G.S.
FILE COPY
TOPOGRAPHIC DIVISION
OREGON, WIS.
NW/4 EVANSVILLE 15' QUADRANGLE
N4252.5-W8922.5/7.5
1961
PHOTOREVISED 1969
AMS 3169 IV NW-SERIES V861

1950
Run in
MAY 15 1970