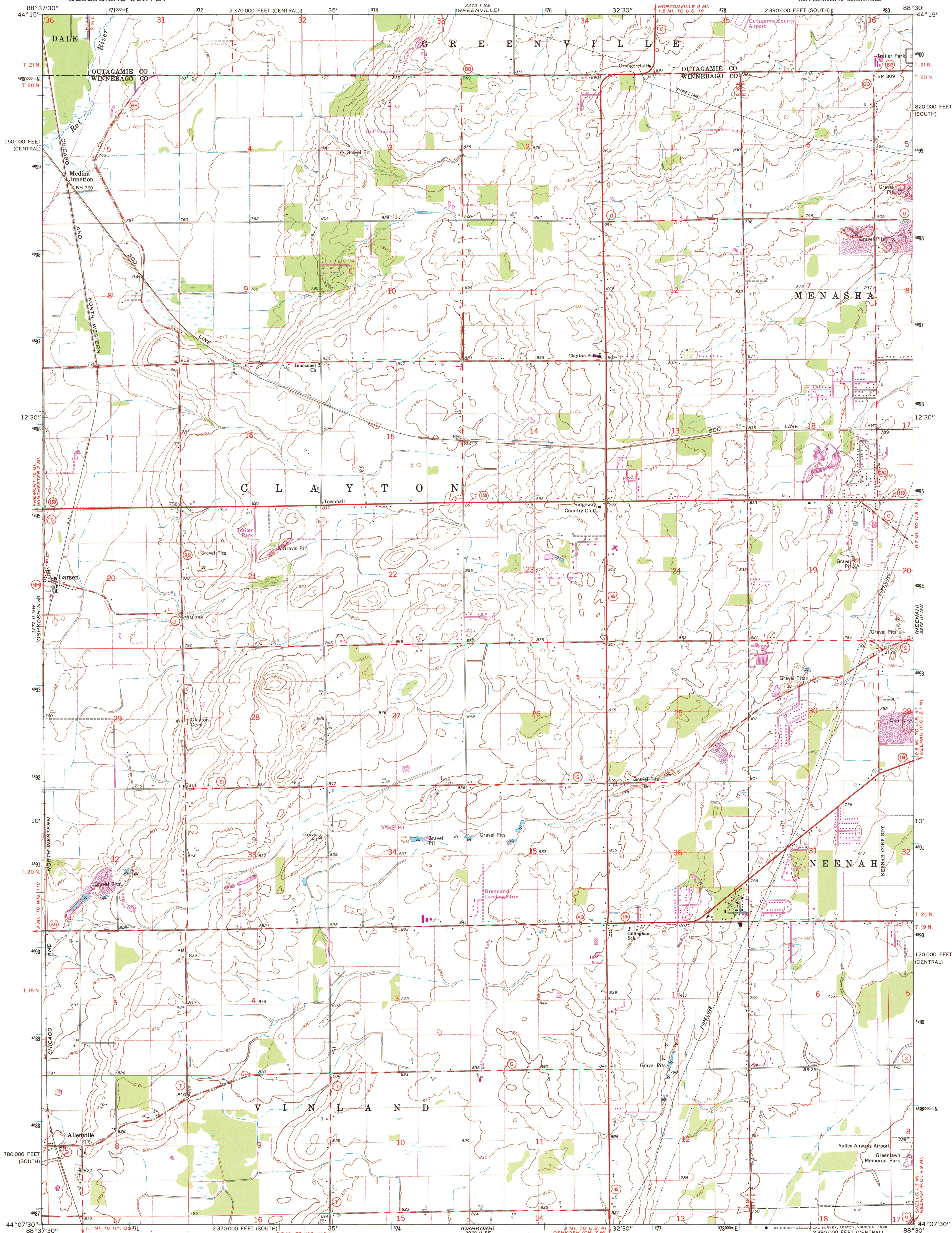


UNITED STATES  
DEPARTMENT OF THE INTERIOR  
GEOLOGICAL SURVEY

OSHKOSH NE QUADRANGLE  
WISCONSIN  
7.5 MINUTE SERIES (TOPOGRAPHIC)  
NE/4 OSHKOSH 15' QUADRANGLE



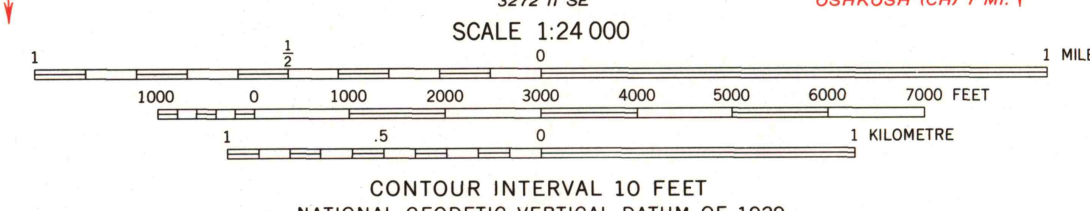
Mapped, edited, and published by the Geological Survey  
in cooperation with the Wisconsin Highway Commission  
and Wisconsin Geological and Natural History Survey  
Control by USGS and USC&GS

Topography by photogrammetric methods from aerial  
photographs taken 1960. Field checked 1961  
Polyconic projection, 1927 North American datum  
10,000-foot grids based on Wisconsin coordinate system,  
south and central zones

1000-metre Universal Transverse Mercator grid ticks,  
zone 16, shown in blue

Fine red dashed lines indicate selected fence and field lines where  
generally visible on aerial photographs. This information is unchecked

UTM GRID AND 1975 MAGNETIC NORTH  
DECLINATION AT CENTER OF SHEET



THIS MAP COMPLIES WITH NATIONAL MAP ACCURACY STANDARDS  
FOR SALE BY U. S. GEOLOGICAL SURVEY, RESTON, VIRGINIA 22092  
AND BY THE WISCONSIN GEOLOGICAL AND NATURAL HISTORY SURVEY, MADISON, WISCONSIN 53706  
A FOLDER DESCRIBING TOPOGRAPHIC MAPS AND SYMBOLS IS AVAILABLE ON REQUEST

To place on the predicted North American Datum 1983,  
move the projection lines 5 meters north and  
8 meters east as shown by dashed corner ticks  
Revisions shown in purple compiled from aerial photographs  
taken 1975. This information not field checked



ROAD CLASSIFICATION  
Heavy-duty ——— Light-duty ———  
Medium-duty ——— Unimproved dirt ———  
U. S. Route ——— State Route ———

OSHKOSH NE, WIS.  
NE/4 OSHKOSH 15' QUADRANGLE  
44088-B5-TF-024

1961  
PHOTOREVISED 1975  
DMA 3272 II NE—SERIES V861

USGS NMD HISTORICAL MAP  
JUL 24 1966  
REC'D FILE COPY