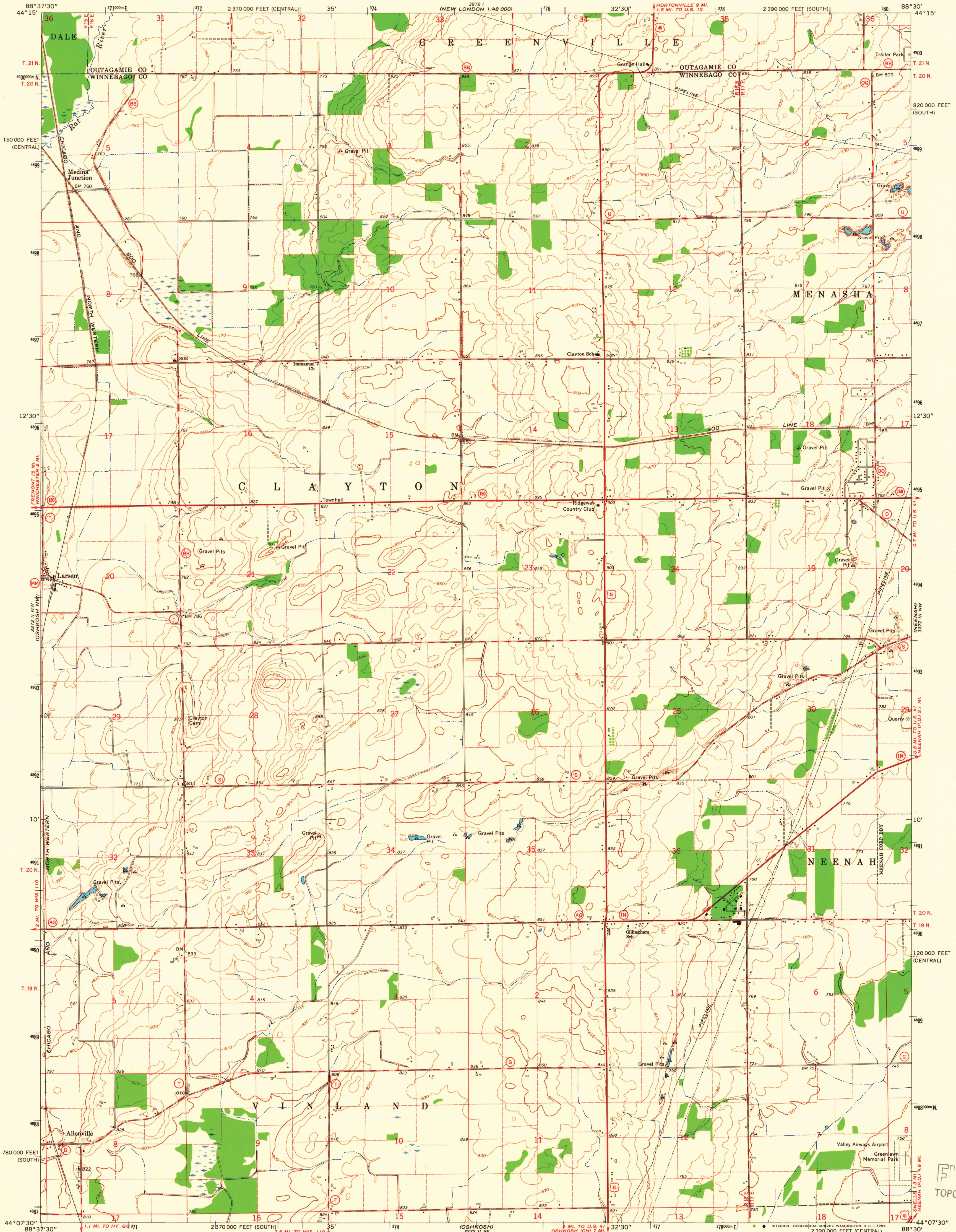


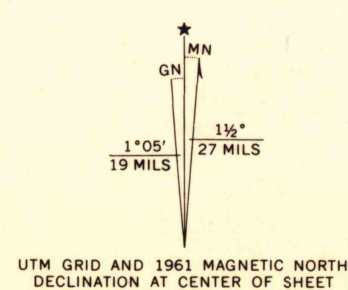
UNITED STATES  
DEPARTMENT OF THE INTERIOR  
GEOLOGICAL SURVEY

OSHKOSH NE QUADRANGLE  
WISCONSIN  
7.5 MINUTE SERIES (TOPOGRAPHIC)  
NE/4 OSHKOSH 15 QUADRANGLE



Mapped, edited, and published by the Geological Survey  
in cooperation with the Wisconsin Highway Commission  
and Wisconsin Geological and Natural History Survey  
Control by USGS and USC&GS

Topography by photogrammetric methods from aerial  
photographs taken 1960. Field checked 1961  
Polyconic projection. 1927 North American datum  
10,000-foot grids based on Wisconsin coordinate system,  
south and central zones  
1000-meter Universal Transverse Mercator grid ticks,  
zone 16, shown in blue  
Fine red dashed lines indicate selected fence and field lines where  
generally visible on aerial photographs. This information is unchecked



THIS MAP COMPLIES WITH NATIONAL MAP ACCURACY STANDARDS  
FOR SALE BY U. S. GEOLOGICAL SURVEY, WASHINGTON, D. C. 20242  
AND BY THE WISCONSIN GEOLOGICAL AND NATURAL HISTORY SURVEY, MADISON, WISCONSIN  
A FOLDER DESCRIBING TOPOGRAPHIC MAPS AND SYMBOLS IS AVAILABLE ON REQUEST



ROAD CLASSIFICATION  
Heavy-duty ——— Light-duty ———  
Medium-duty - - - - - Unimproved dirt - - - - -  
U.S. Route ——— State Route ———

OSHKOSH NE, WIS.  
NE/4 OSHKOSH 15 QUADRANGLE  
N4407.5—W8830.7.5

U.S.G.S.  
FIVE COPY  
TOPOGRAPHIC DIVISION

2555  
OCT 3 1965

1961  
AMS 3272 II NE—SERIES V861