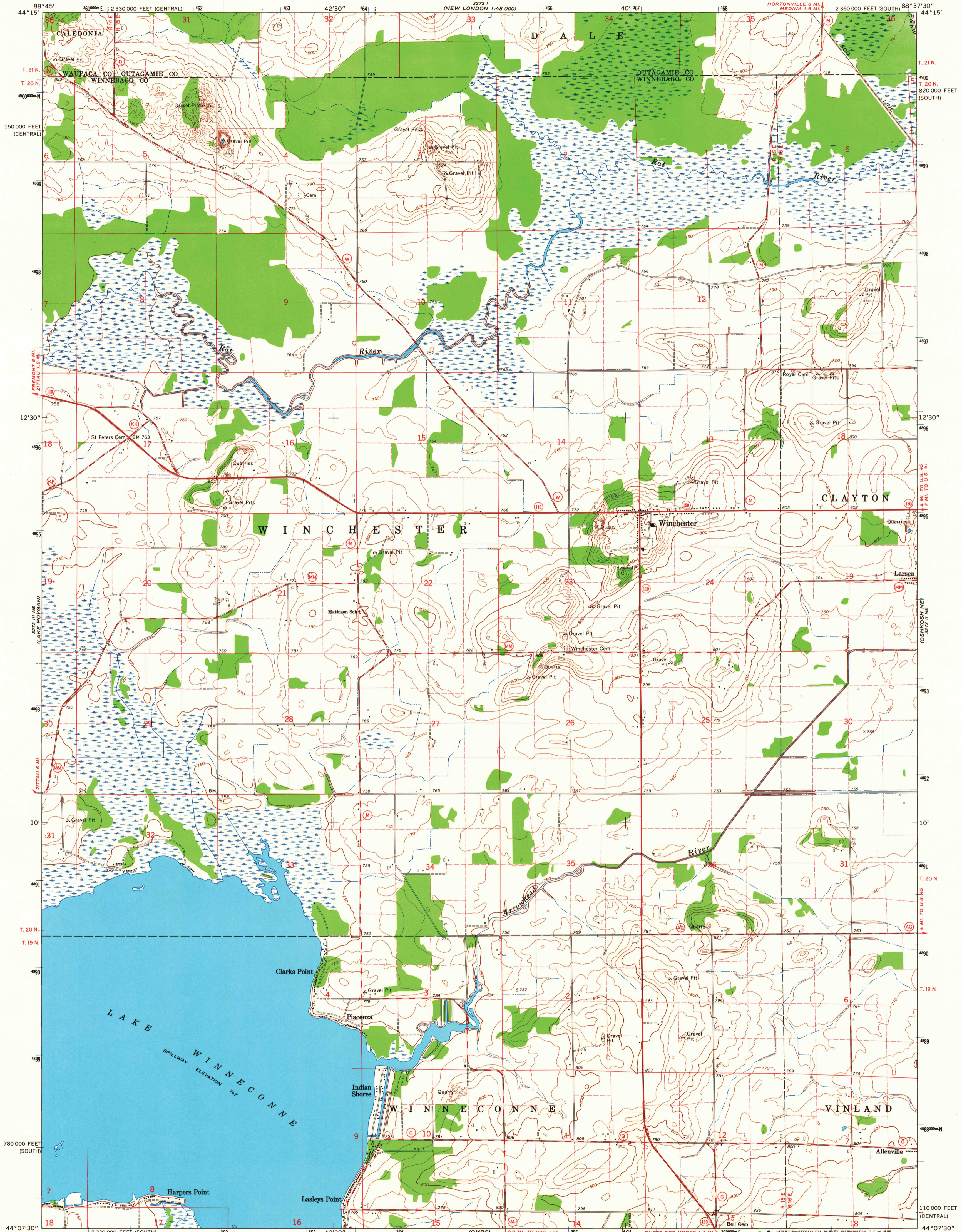


UNITED STATES  
DEPARTMENT OF THE INTERIOR  
GEOLOGICAL SURVEY

OSHKOSH NW QUADRANGLE  
WISCONSIN  
7.5 MINUTE SERIES (TOPOGRAPHIC)  
NW/4 OSHKOSH 15' QUADRANGLE

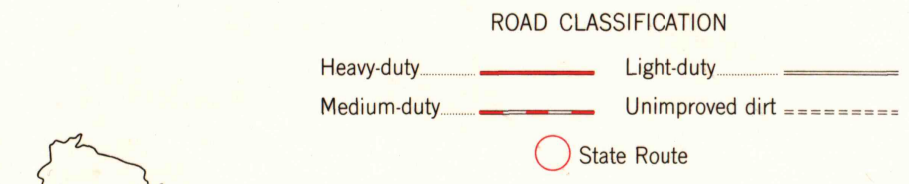
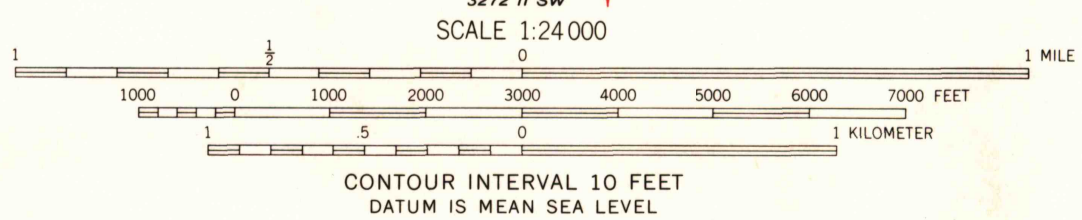
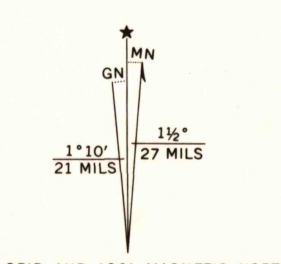


Mapped, edited, and published by the Geological Survey in cooperation with the Wisconsin Highway Commission and Wisconsin Geological and Natural History Survey. Control by USGS and USC&GS.

Topography by photogrammetric methods from aerial photographs taken 1960. Field checked 1961.

Polycyclic projection. 1927 North American datum. 10,000-foot grids based on Wisconsin coordinate system, south and central zones. 1000-meter Universal Transverse Mercator grid ticks, zone 16, shown in blue.

Fine red dashed lines indicate selected fence and field lines where generally visible on aerial photographs. This information is unchecked.



THIS MAP COMPLIES WITH NATIONAL MAP ACCURACY STANDARDS FOR SALE BY U.S. GEOLOGICAL SURVEY, WASHINGTON, D. C. 20242 AND BY THE WISCONSIN GEOLOGICAL AND NATURAL HISTORY SURVEY, MADISON, WISCONSIN. A FOLDER DESCRIBING TOPOGRAPHIC MAPS AND SYMBOLS IS AVAILABLE ON REQUEST.

U.S.G.S. OSHKOSH NW, WIS.  
NW/4 OSHKOSH 15' QUADRANGLE  
N4407.5—W837.5/7.5  
1961

TOPOGRAPHIC DIVISION AMS 3272 II NW—SERIES W861

375  
SEP 1 1966