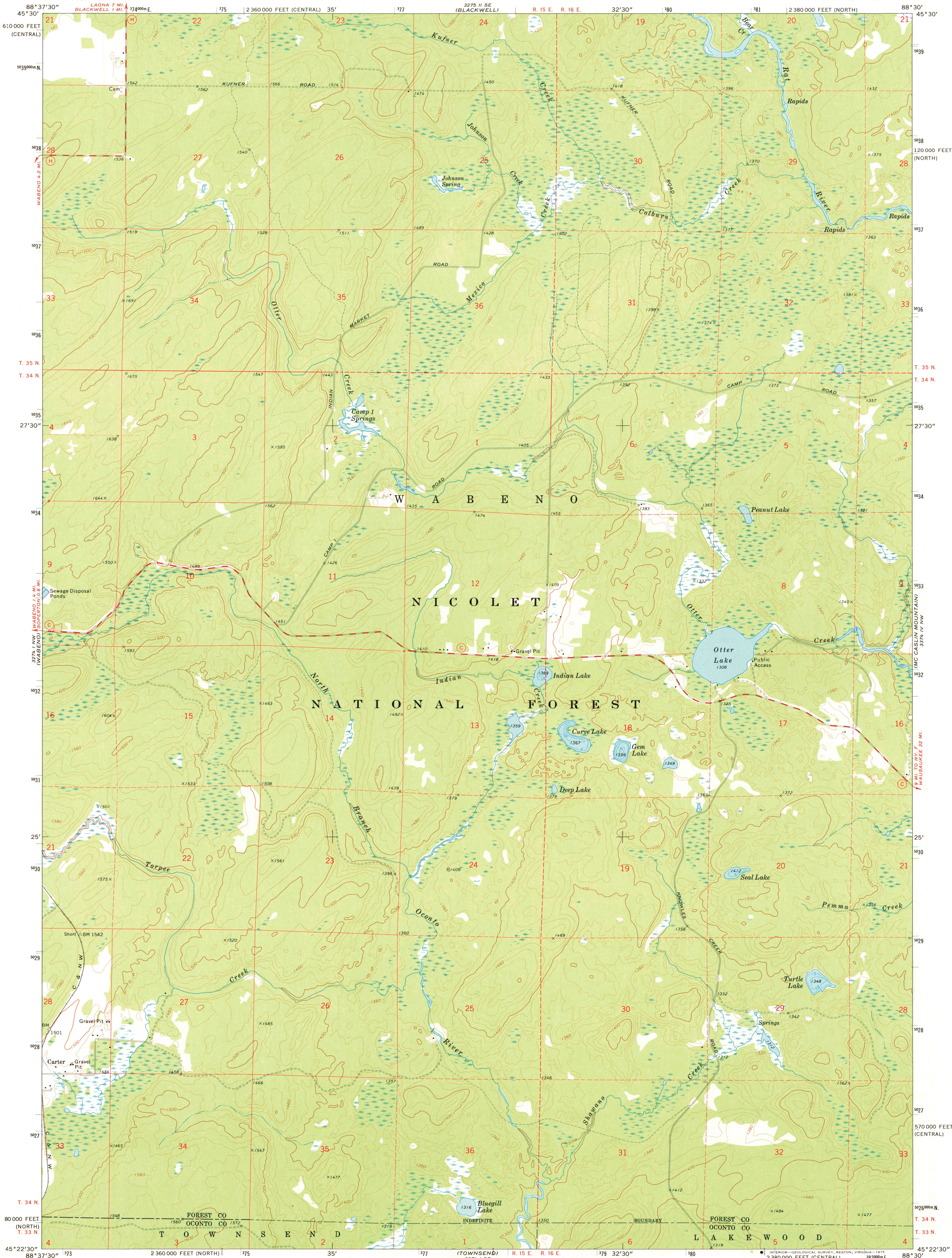


UNITED STATES  
DEPARTMENT OF THE INTERIOR  
GEOLOGICAL SURVEY

OTTER LAKE QUADRANGLE  
WISCONSIN  
7.5 MINUTE SERIES (TOPOGRAPHIC)  
NE 1/4 WABENO 15' QUADRANGLE



Mapped, edited, and published by the Geological Survey

Control by USGS and USC&GS

Topography by photogrammetric methods from aerial photographs taken 1971. Field checked 1972

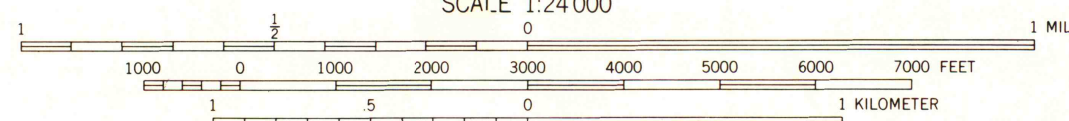
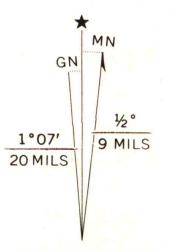
Hydrography compiled from information furnished by Wisconsin Department of Natural Resources

Projection: Wisconsin coordinate system, north zone (Lambert conformal conic)

10,000-foot grid ticks based on Wisconsin coordinate system, north and central zones

1000-meter Universal Transverse Mercator grid ticks, zone 16, shown in blue. 1927 North American datum

Fine red dashed lines indicate selected fence and field lines where generally visible on aerial photographs. This information is unchecked



CONTOUR INTERVAL 20 FEET  
NATIONAL GEODETIC VERTICAL DATUM OF 1929

THIS MAP COMPLIES WITH NATIONAL MAP ACCURACY STANDARDS FOR SALE BY U.S. GEOLOGICAL SURVEY, RESTON, VIRGINIA 22092 AND BY THE WISCONSIN GEOLOGICAL AND NATURAL HISTORY SURVEY, MADISON, WISCONSIN 53706 A FOLDER DESCRIBING TOPOGRAPHIC MAPS AND SYMBOLS IS AVAILABLE ON REQUEST



ROAD CLASSIFICATION

Primary highway, hard surface	Light-duty road, hard or improved surface
Secondary highway, hard surface	Unimproved road
Interstate Route	U. S. Route
	State Route

OTTER LAKE, WIS.  
NE 1/4 WABENO 15' QUADRANGLE  
N4522.5-W8830.7.5

1972  
AMS 3274 1 NE-SERIES V861

MAP AND AIR PHOTO LIBRARY

MAY 2 1975

University of Wisconsin

1972  
copy  
1-1