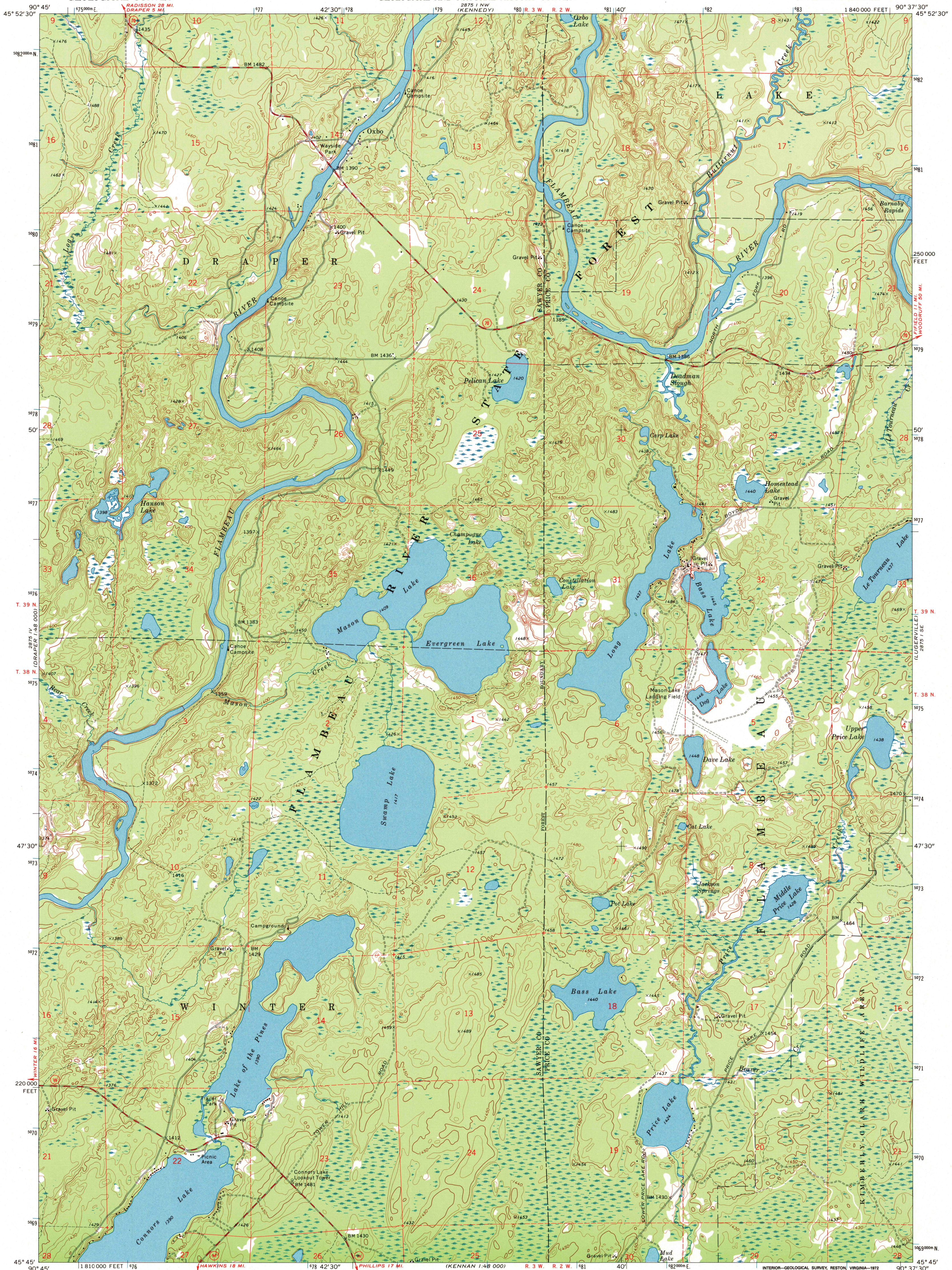


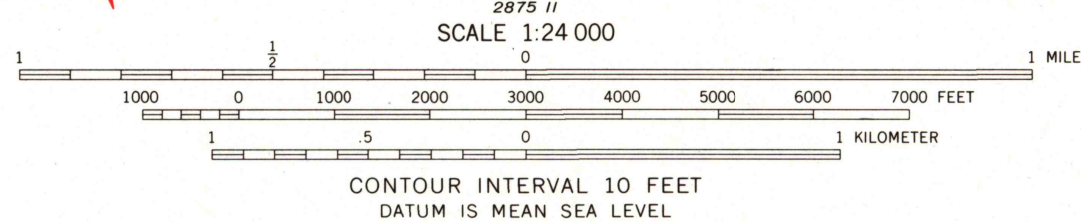
UNITED STATES
DEPARTMENT OF THE INTERIOR
GEOLOGICAL SURVEY

STATE OF WISCONSIN
STATE HIGHWAY COMMISSION
GEOLOGICAL AND NATURAL HISTORY SURVEY

OXBO QUADRANGLE
WISCONSIN
7.5 MINUTE SERIES (TOPOGRAPHIC)



Mapped, edited, and published by the Geological Survey in cooperation with the Wisconsin Highway Commission and Wisconsin Geological and Natural History Survey. Control by USGS and USC&GS. Topography by photogrammetric methods from aerial photographs taken 1969. Field checked 1970. Polyconic projection. 1927 North American datum 10,000-foot grid based on Wisconsin coordinate system, north zone 1000-meter Universal Transverse Mercator grid ticks, zone 15, shown in blue.



ROAD CLASSIFICATION
Secondary highway, all weather, Light-duty road, all weather, improved surface
Unimproved road, fair or dry weather
State Route



OXBO, WIS.
SW 1/4 KENNEDY 15' QUADRANGLE
N4545-W9037.5/7.5
1970
AMS 2875 1 SW-SERIES 8661

THIS MAP COMPLIES WITH NATIONAL MAP ACCURACY STANDARDS FOR SALE BY U.S. GEOLOGICAL SURVEY, WASHINGTON, D. C. 20242 AND BY THE WISCONSIN GEOLOGICAL AND NATURAL HISTORY SURVEY, MADISON, WISCONSIN 53706 A FOLDER DESCRIBING TOPOGRAPHIC MAPS AND SYMBOLS IS AVAILABLE ON REQUEST

RECEIVED
DEC 3 1 1999
USGS NHD
HISTORICAL MAP ARCHIVES

