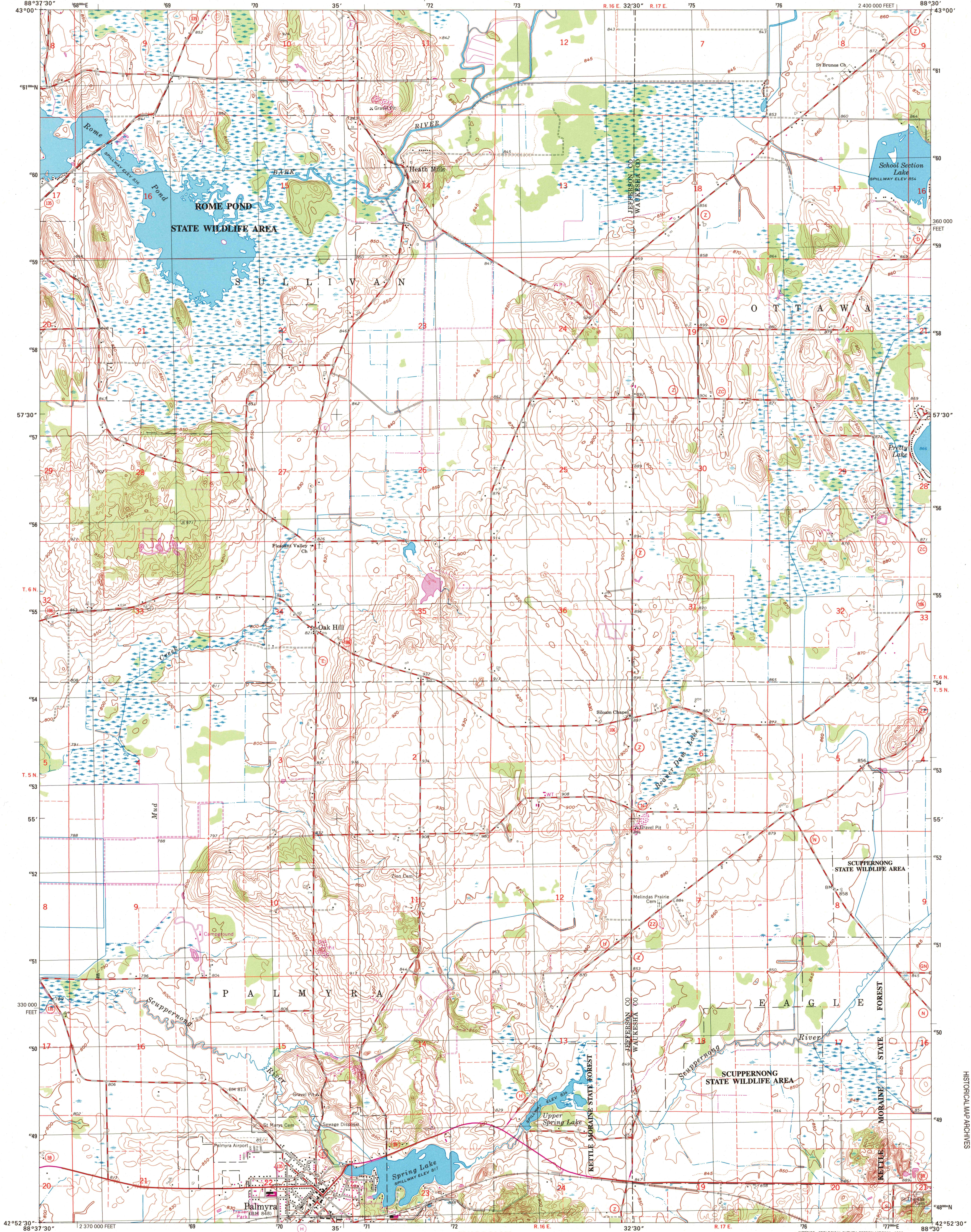


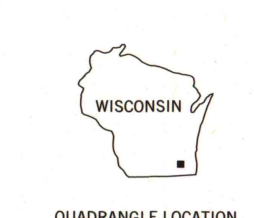
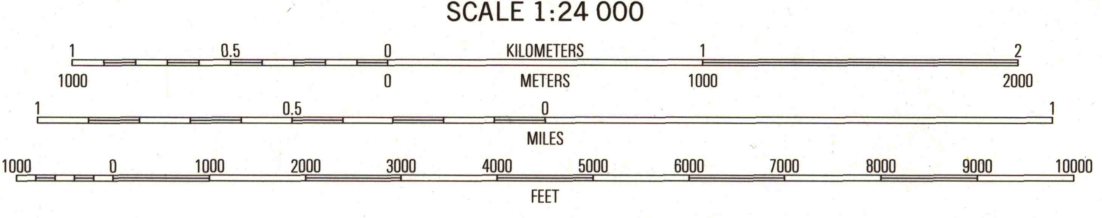
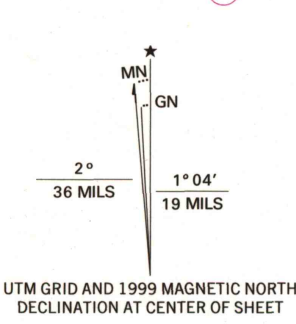


U.S. DEPARTMENT OF THE INTERIOR  
U.S. GEOLOGICAL SURVEY

PALMYRA QUADRANGLE  
WISCONSIN  
7.5-MINUTE SERIES (TOPOGRAPHIC)



Produced by the United States Geological Survey  
Topography compiled 1955. Planimetry derived from imagery taken 1971 and other sources. Photorevised using imagery dated 1995; no major culture or drainage changes observed. PLSS and survey control current as of 1960. Reservation boundaries current as of 1980, others revised 1999  
North American Datum of 1927 (NAD 27). Projection and 10 000-foot ticks: Wisconsin coordinate system, south zone (Lambert conformal cone)  
1000-meter Universal Transverse Mercator grid, zone 16  
North American Datum of 1983 (NAD 83) is shown by dashed corner ticks. The values of the shift between NAD 27 and NAD 83 for 7.5-minute intersections are obtainable from National Geodetic Survey NADCON software  
Where omitted land lines have not been established  
There may be private inholdings within the boundaries of the National or State reservations shown on this map  
Information shown in purple may not meet USGS content standards and may conflict with previously mapped contours



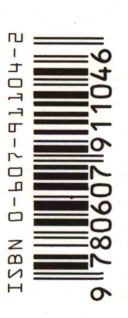
ROAD CLASSIFICATION  
Primary highway  
hard surface .....  
improved surface .....  
Secondary highway  
hard surface .....  
unimproved road .....  
Interstate Route  
U.S. Route  
State Route

QUADRANGLE LOCATION

1	2	3
4	5	6
7	8	9

ADJOINING 7.5' QUADRANGLE NAMES

PALMYRA, WI  
1995  
NIMA 32691 NE-SERIES V861



RECEIVED  
JUL 31 1999  
USGS M&D  
HISTORICAL MAP ARCHIVES