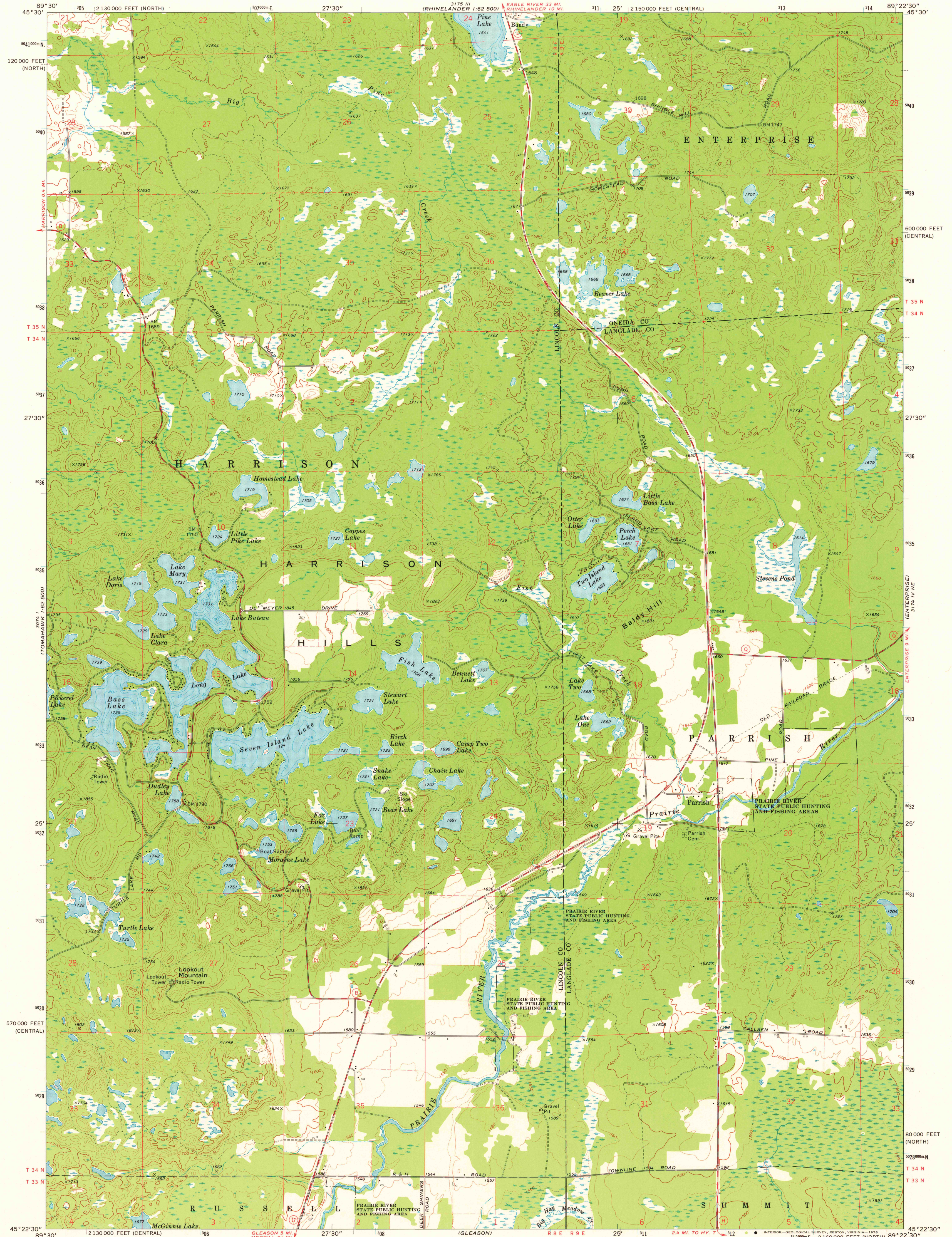


UNITED STATES
DEPARTMENT OF THE INTERIOR
GEOLOGICAL SURVEY

PARRISH QUADRANGLE
WISCONSIN
7.5 MINUTE SERIES (TOPOGRAPHIC)
NW/4 PARRISH 15' QUADRANGLE



Mapped, edited, and published by the Geological Survey

Control by USGS and NOS/NOAA
Topography by photogrammetric methods from aerial photographs taken 1972. Field checked 1973

Hydrography compiled from information furnished by Wisconsin Department of Natural Resources

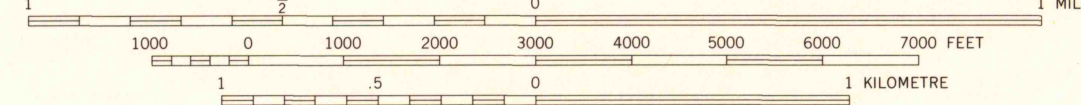
Projection: Wisconsin coordinate system, central zone (Lambert conformal conic)

10,000-foot grid ticks based on Wisconsin coordinate system, central and north zones

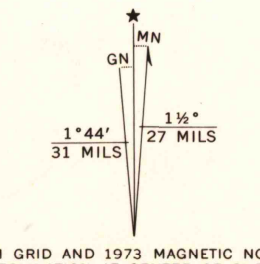
1000-metre Universal Transverse Mercator grid ticks, zone 16, shown in blue. 1927 North American datum

Fine red dashed lines indicate selected fence and field lines where generally visible on aerial photographs. This information is unchecked

SCALE 1:24 000



CONTOUR INTERVAL 20 FEET
DOTTED LINES REPRESENT 10-FOOT CONTOURS
NATIONAL GEODETIC VERTICAL DATUM OF 1929



THIS MAP COMPLIES WITH NATIONAL MAP ACCURACY STANDARDS
FOR SALE BY U.S. GEOLOGICAL SURVEY, RESTON, VIRGINIA 22092
AND BY THE WISCONSIN GEOLOGICAL AND NATURAL HISTORY SURVEY, MADISON, WISCONSIN 53706
A FOLDER DESCRIBING TOPOGRAPHIC MAPS AND SYMBOLS IS AVAILABLE ON REQUEST

ROAD CLASSIFICATION

- Primary highway, hard surface
- Secondary highway, hard surface
- Light-duty road, hard or improved surface
- Unimproved road
- Interstate Route
- U. S. Route
- State Route

PARRISH, WIS.

NW/4 PARRISH 15' QUADRANGLE
N4522.5-W8922.5/7.5

USGS
Historical File
Topographic Division

1973

APR 0 8 1976

AMS 3174 IV NW-SERIES W861