

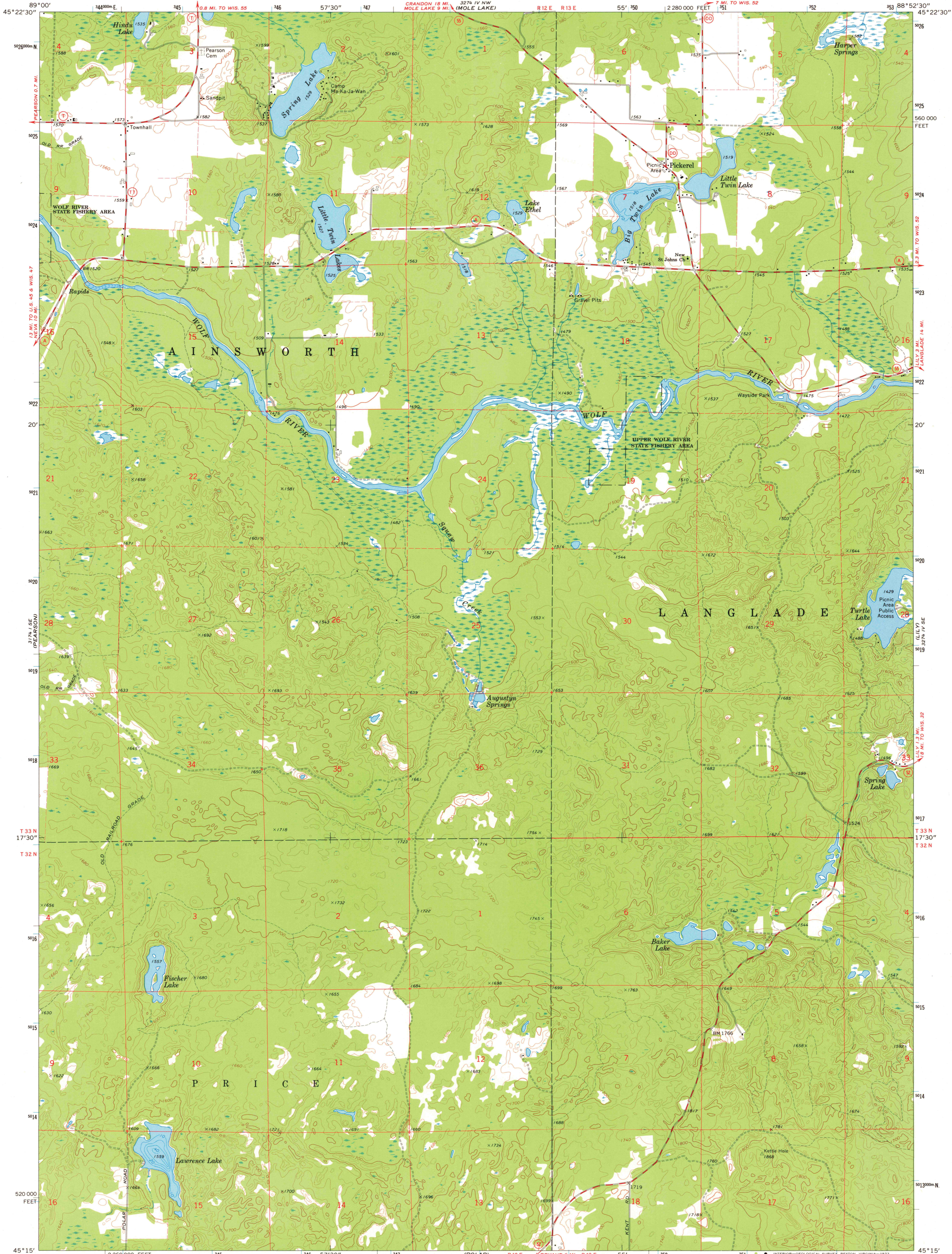
3 1/2 MI. NE
POST LAKE

UNITED STATES
DEPARTMENT OF THE INTERIOR
GEOLOGICAL SURVEY

STATE OF WISCONSIN
DIVISION OF HIGHWAYS
GEOLOGICAL AND NATURAL HISTORY SURVEY

PICKEREL QUADRANGLE
WISCONSIN-LANGLADE CO.
7.5 MINUTE SERIES (TOPOGRAPHIC)
SW 1/4 LILY 15' QUADRANGLE

3 1/2 MI. NE
ROBERTS LAKE



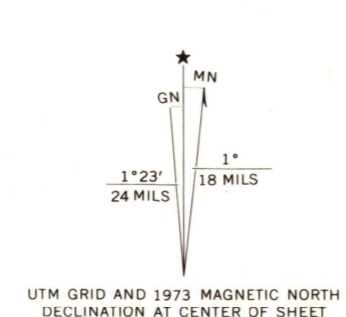
Mapped, edited, and published by the Geological Survey in cooperation with Wisconsin Division of Highways and Wisconsin Geological and Natural History Survey. Control by USGS and NOS/NOAA.

Topography by photogrammetric methods from aerial photographs taken 1972. Field checked 1973.

Hydrography compiled from information furnished by Wisconsin Department of Natural Resources.

Projection and 10,000-foot grid ticks: Wisconsin coordinate system, central zone (Lambert conformal conic). 1000-metre Universal Transverse Mercator grid ticks, zone 16, shown in blue. 1927 North American datum.

Fine red dashed lines indicate selected fence and field lines where generally visible on aerial photographs. This information is un-checked.



SCALE 1:24 000

CONTOUR INTERVAL 20 FEET
NATIONAL GEODETIC VERTICAL DATUM OF 1929

1 MILE
1 KILOMETRE



ROAD CLASSIFICATION

Primary highway, hard surface — Light-duty road, hard or improved surface

Secondary highway, hard surface — Unimproved road

Interstate Route — U.S. Route — State Route

THIS MAP COMPLIES WITH NATIONAL MAP ACCURACY STANDARDS FOR SALE BY U.S. GEOLOGICAL SURVEY, RESTON, VIRGINIA 22092 AND BY THE WISCONSIN GEOLOGICAL AND NATURAL HISTORY SURVEY, MADISON, WISCONSIN 53706. A FOLDER DESCRIBING TOPOGRAPHIC MAPS AND SYMBOLS IS AVAILABLE ON REQUEST.

USGS Historical File
Topographic Division

PICKEREL, WIS.
SW 1/4 LILY 15' QUADRANGLE
4515-W8852.5/7.5

1973

MAY 19 1977

AMS 3274 IV SW-SERIES V861