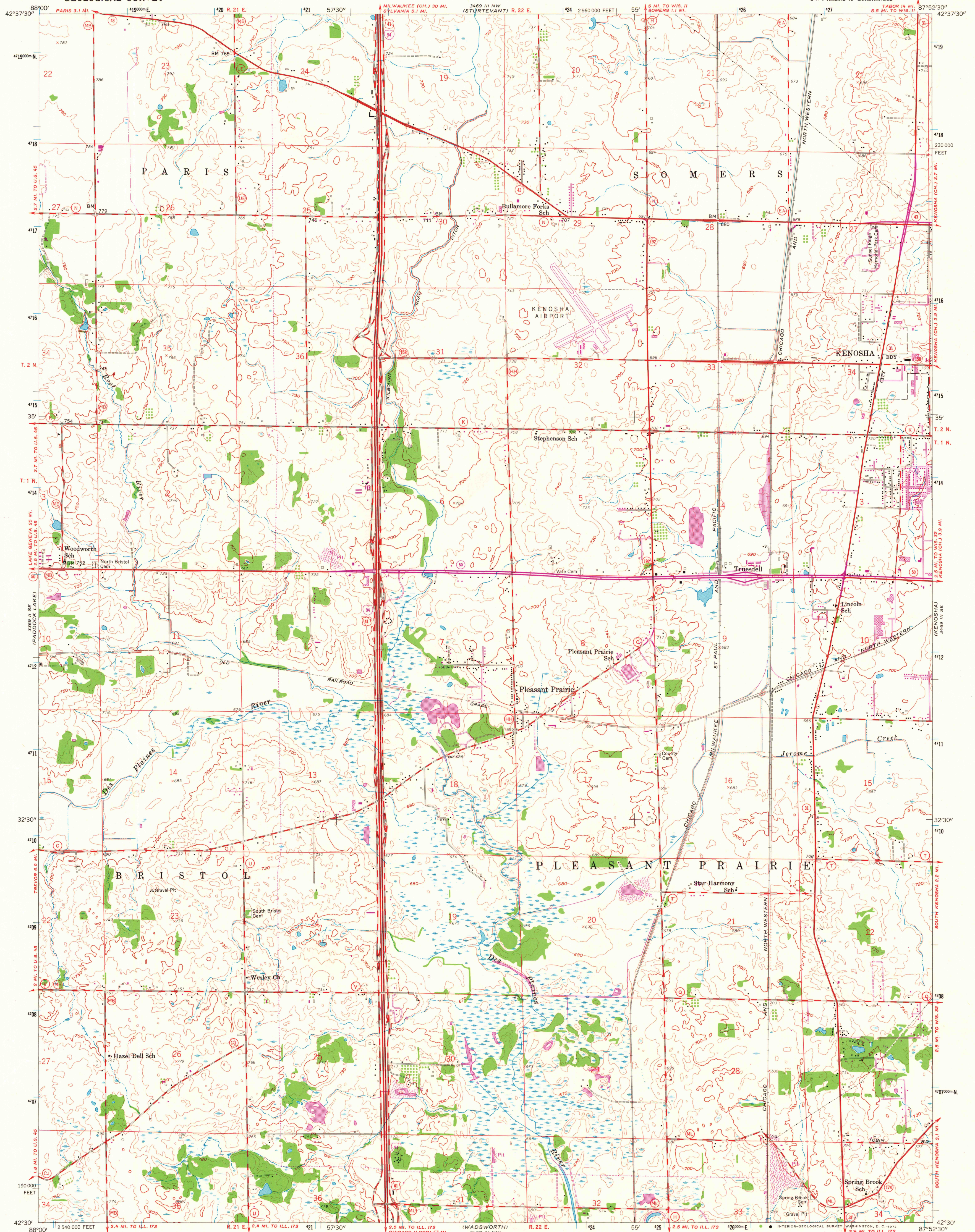


UNITED STATES  
DEPARTMENT OF THE INTERIOR  
GEOLOGICAL SURVEY

PLEASANT PRAIRIE QUADRANGLE  
WISCONSIN-KENOSHA CO.  
7.5 MINUTE SERIES (TOPOGRAPHIC)  
SW 1/4 RACINE 15' QUADRANGLE

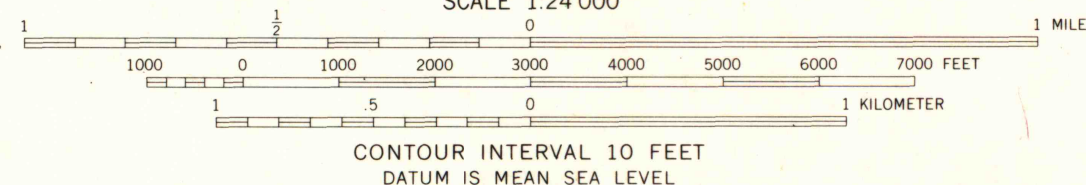
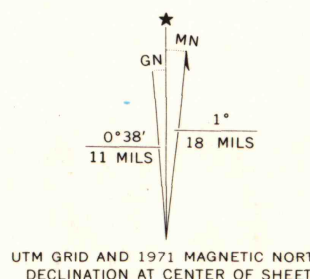


Maped, edited, and published by the Geological Survey

Control by USGS, USC&GS, and U. S. Lake Survey  
Topography from aerial photographs by photogrammetric methods  
Aerial photographs taken 1955. Field check 1958

Polyconic projection. 1927 North American datum  
10,000-foot grid based on Wisconsin coordinate system, south zone  
1000-meter Universal Transverse Mercator grid ticks,  
zone 16, shown in blue

Revisions shown in purple compiled from aerial photographs  
taken 1971. This information not field checked



THIS MAP COMPLIES WITH NATIONAL MAP ACCURACY STANDARDS  
FOR SALE BY U. S. GEOLOGICAL SURVEY, WASHINGTON, D. C. 20242  
AND BY THE WISCONSIN GEOLOGICAL AND NATURAL HISTORY SURVEY, MADISON, WISCONSIN 53706  
A FOLDER DESCRIBING TOPOGRAPHIC MAPS AND SYMBOLS IS AVAILABLE ON REQUEST



ROAD CLASSIFICATION  
Heavy-duty ——— Light-duty ———  
Medium-duty ——— Unimproved dirt ———  
U. S. Route ——— State Route ———  
Interstate Route ———  
PLEASANT PRAIRIE, WIS.  
SW 1/4 RACINE 15' QUADRANGLE  
N 4230-W 8752.5/7.5

1958  
PHOTOREVISED 1971  
AMS 3469 III SW-SERIES V861

MAP AND AIR PHOTO

JAN - 9 1973

University of Wisconsin

1971  
Copy  
1-1