

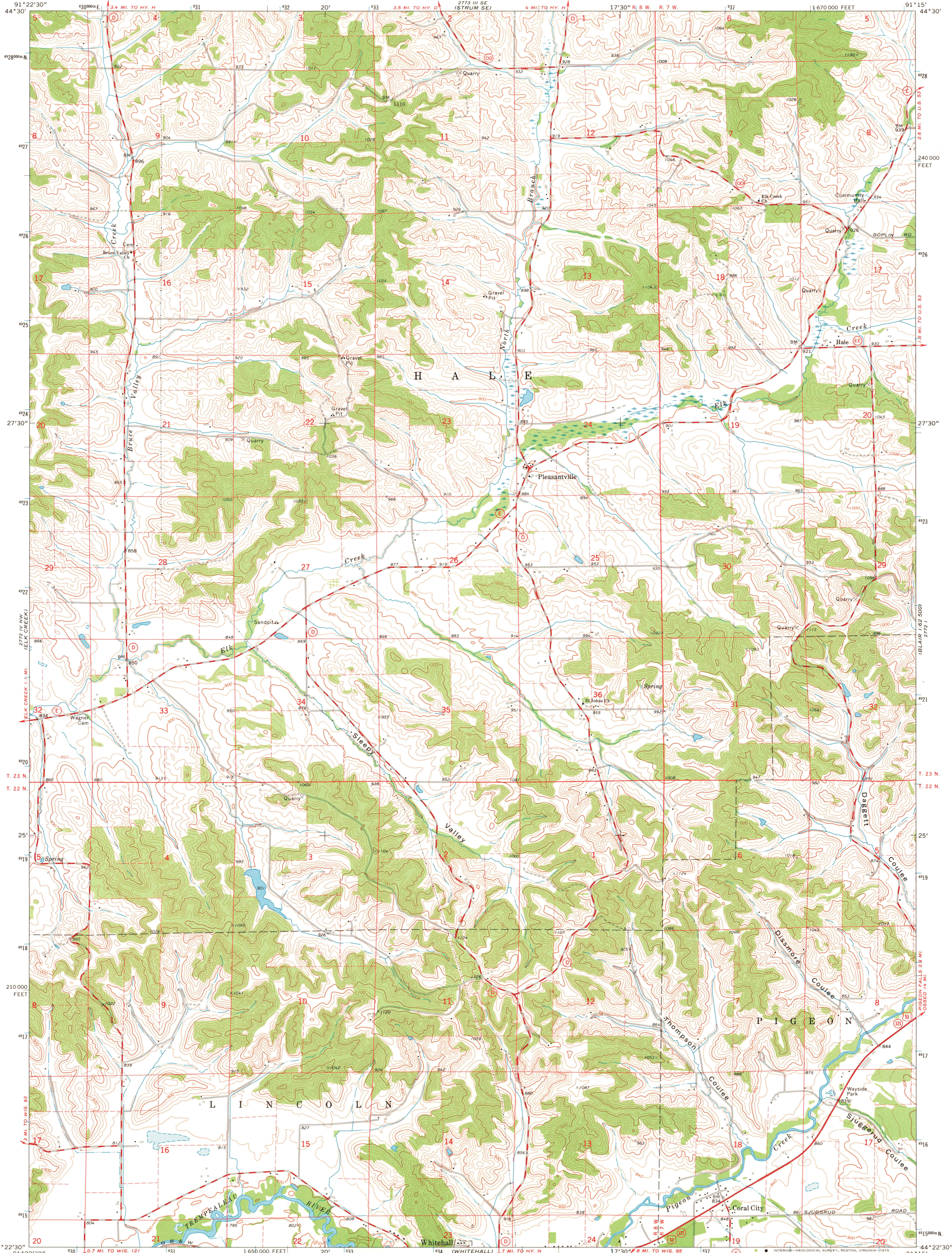
2772 IV SW
(STRUM)

UNITED STATES
DEPARTMENT OF THE INTERIOR
GEOLOGICAL SURVEY

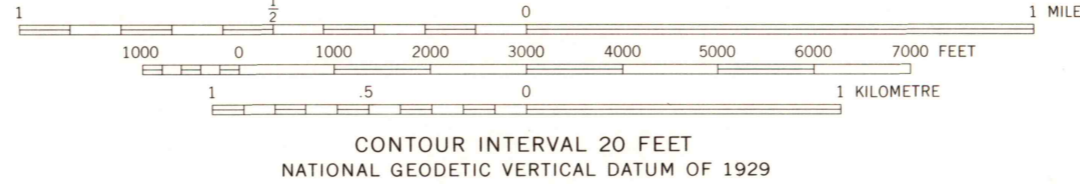
STATE OF WISCONSIN
DIVISION OF HIGHWAYS
GEOLOGICAL AND NATURAL HISTORY SURVEY

PLEASANTVILLE QUADRANGLE
WISCONSIN-TREMPEALEAU CO.
7.5 MINUTE SERIES (TOPOGRAPHIC)
NE 1/4 WHITEHALL 15' QUADRANGLE

2772 II SE
(OSSECO 880 800)



Mapped, edited, and published by the Geological Survey in cooperation with the Wisconsin Division of Highways and Wisconsin Geological and Natural History Survey
Control by USGS and NOS/NOAA
Topography by photogrammetric methods from aerial photographs taken 1973. Field checked 1973
Projection and 10,000-foot grid ticks: Wisconsin coordinate system, central zone (Lambert conformal conic)
1000-metre Universal Transverse Mercator grid ticks, zone 15, shown in blue. 1927 North American datum
Fine red dashed lines indicate selected fence and field lines where generally visible on aerial photographs. This information is unchecked



CONTOUR INTERVAL 20 FEET
NATIONAL GEODETIC VERTICAL DATUM OF 1929
SCALE 1:24,000
THIS MAP COMPLIES WITH NATIONAL MAP ACCURACY STANDARDS FOR SALE BY U. S. GEOLOGICAL SURVEY, RESTON, VIRGINIA 22092 AND BY THE WISCONSIN GEOLOGICAL AND NATURAL HISTORY SURVEY, MADISON, WISCONSIN 53706 A FOLDER DESCRIBING TOPOGRAPHIC MAPS AND SYMBOLS IS AVAILABLE ON REQUEST



ROAD CLASSIFICATION

Primary highway, hard surface	Light-duty road, hard or improved surface
Secondary highway, hard surface	Unimproved road
Interstate Route	U. S. Route
	State Route

USGS HISTORICAL FILE TOPOGRAPHIC DIVISION
PLEASANTVILLE, WIS.
NE 1/4 WHITEHALL 15' QUADRANGLE
N4422.5-W9115/7.5
1973
AMS 2772 IV NE-SERIES V861

SEP 22 1975