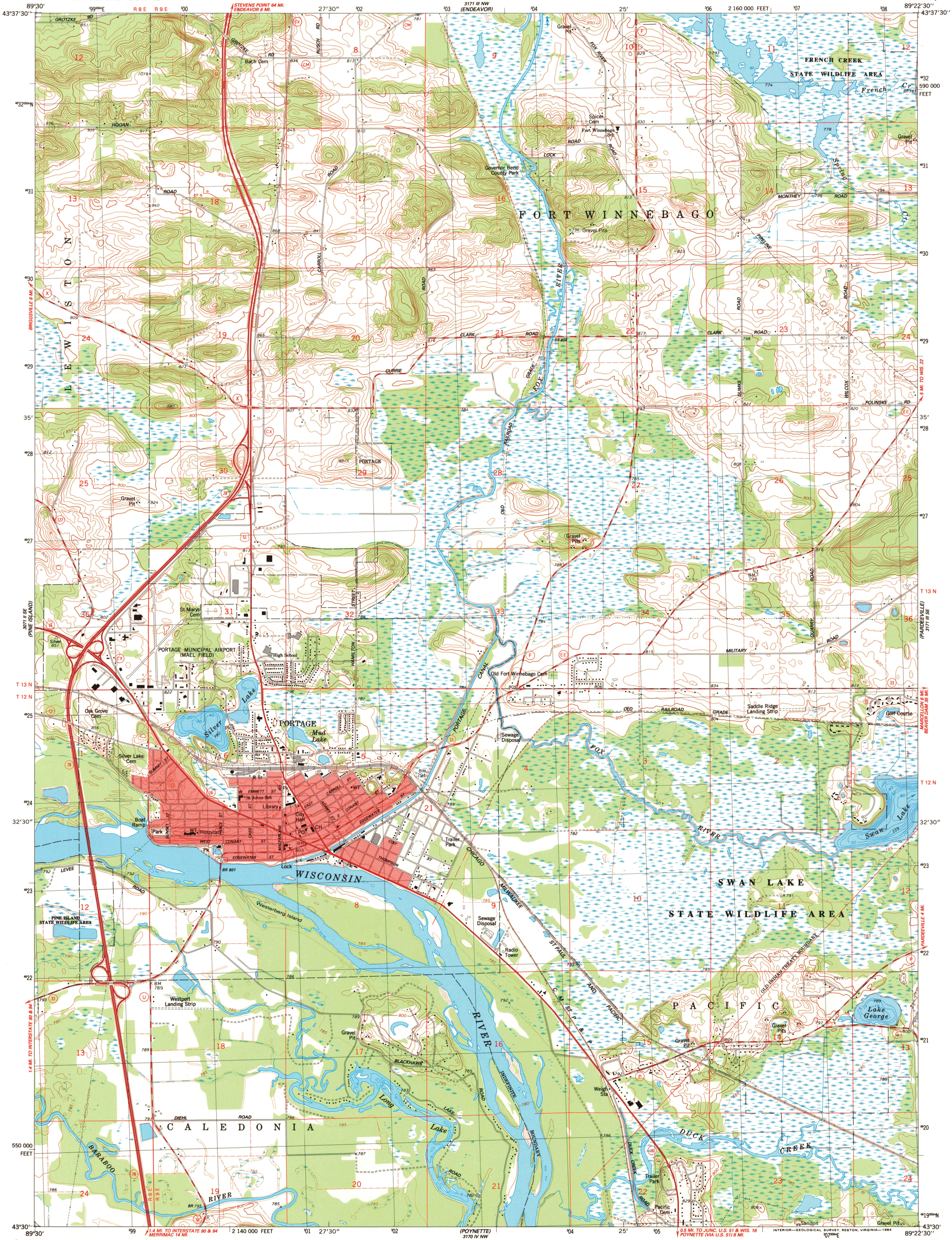
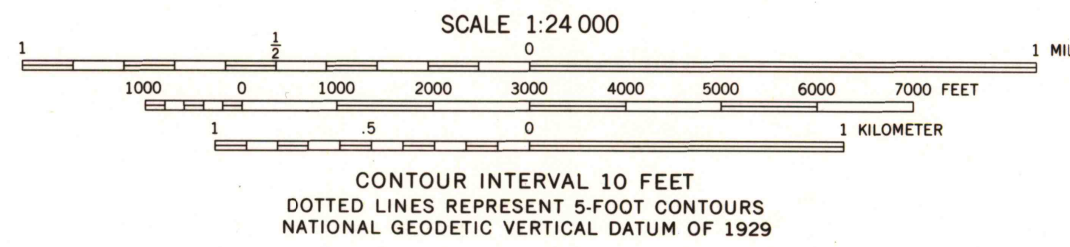
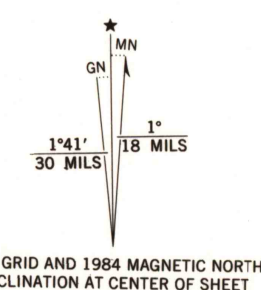


UNITED STATES
DEPARTMENT OF THE INTERIOR
GEOLOGICAL SURVEY

PORTAGE QUADRANGLE
WISCONSIN—COLUMBIA CO.
7.5 MINUTE SERIES (TOPOGRAPHIC)
SW4 PORTAGE 15' QUADRANGLE



Mapped, edited, and published by the Geological Survey in cooperation with the Wisconsin Division of Highways and Wisconsin Geological and Natural History Survey. Control by USGS and NOS/NOAA. Topography by photogrammetric methods from aerial photographs taken 1960. Revised from aerial photographs taken 1982. Field checked 1983. Map edited 1984. Hydrography compiled from information furnished by Wisconsin Department of Natural Resources. Projection and 10,000-foot grid ticks: Wisconsin coordinate system, south zone (Lambert conformal conic). 1000-meter Universal Transverse Mercator grid, zone 16 1927 North American Datum. To place on the predicted North American Datum 1983, move the projection lines 5 meters north and 10 meters east as shown by dashed corner ticks. There may be private inholdings within the boundaries of the National or State reservations shown on this map. Red tint indicates areas in which only landmark buildings are shown.



ROAD CLASSIFICATION

Primary highway, hard surface	Light-duty road, hard or improved surface
Secondary highway, hard surface	Unimproved road
Interstate Route	U. S. Route
	State Route

THIS MAP COMPLIES WITH NATIONAL MAP ACCURACY STANDARDS FOR SALE BY U. S. GEOLOGICAL SURVEY, RESTON, VIRGINIA 22092 AND WISCONSIN GEOLOGICAL AND NATURAL HISTORY SURVEY, MADISON, WISCONSIN 53706. A FOLDER DESCRIBING TOPOGRAPHIC MAPS AND SYMBOLS IS AVAILABLE ON REQUEST.

USGS AND HISTORICAL MAP ARCHIVES
SEP 22 1995
REC'D FILE COPY

PORTAGE, WIS.
SW4 PORTAGE 15' QUADRANGLE
43089-E4-TF-024
1984
DMA 5171 III SW-SERIES V861

