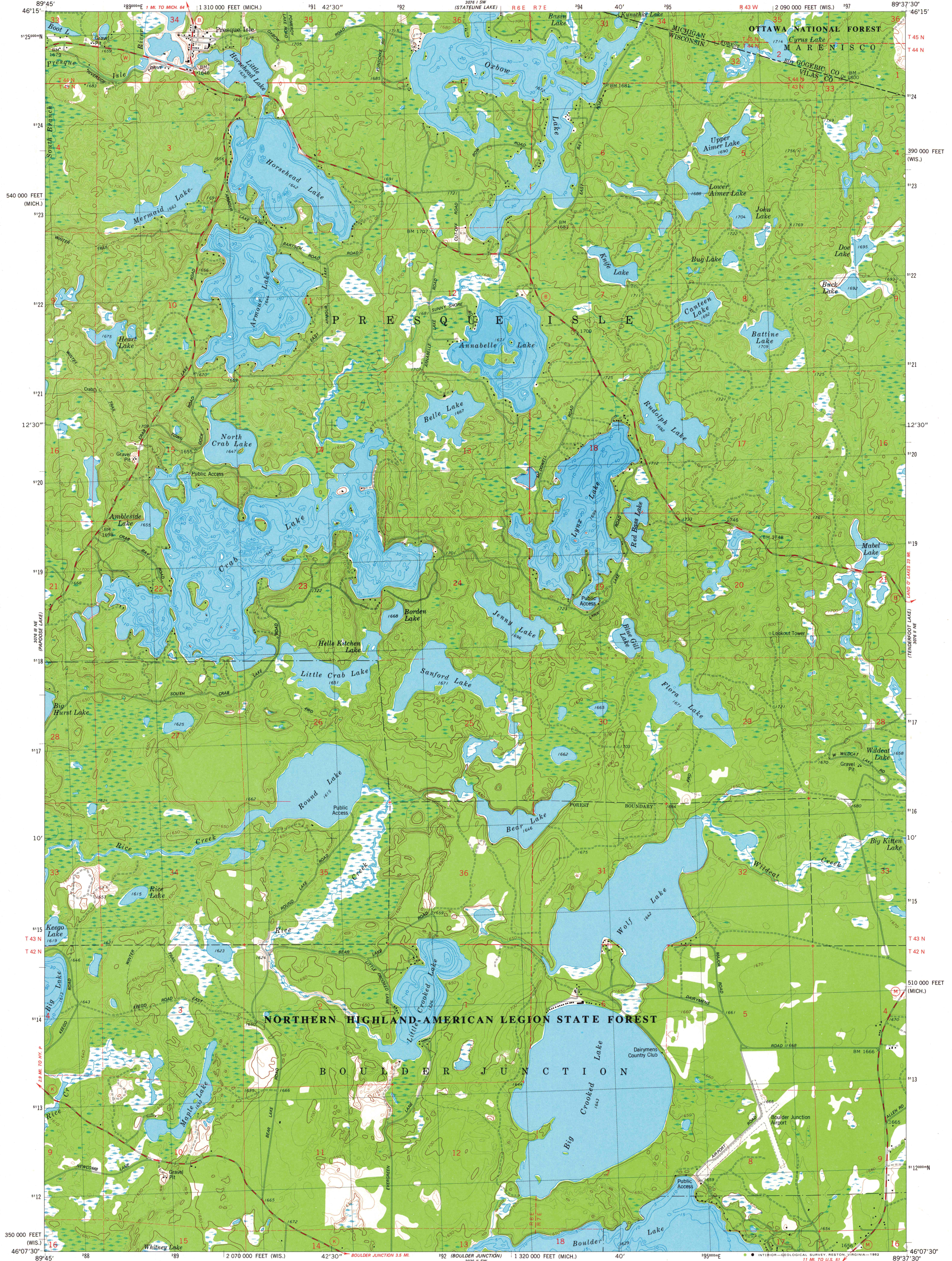


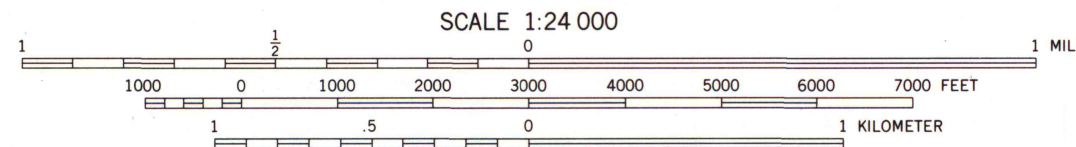
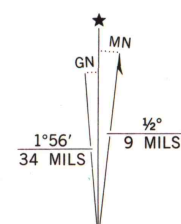
UNITED STATES  
DEPARTMENT OF THE INTERIOR  
GEOLOGICAL SURVEY

STATE OF WISCONSIN  
DIVISION OF HIGHWAYS  
GEOLOGICAL AND NATURAL HISTORY SURVEY

PRESQUE ISLE QUADRANGLE  
WISCONSIN-MICHIGAN  
7.5 MINUTE SERIES (TOPOGRAPHIC)  
NW/4 BOULDER JUNCTION 15' QUADRANGLE  
2 090 000 FEET (WIS.)



Mapped, edited, and published by the Geological Survey in cooperation with the Wisconsin Division of Highways and Wisconsin Geological and Natural History Survey  
Control by USGS and NOS/NOAA  
Topography by photogrammetric methods from aerial photographs taken 1976. Field checked 1978. Map edited 1981  
Hydrography compiled from information furnished by Wisconsin Department of Natural Resources  
Projection: Wisconsin coordinate system, north zone (Lambert conformal conic)  
10,000-foot grid ticks based on Wisconsin coordinate system, north zone, and Michigan coordinate system, north zone 1000-meter Universal Transverse Mercator grid, zone 16 1927 North American Datum  
To place on the predicted North American Datum 1983 move the projection lines 6 meters north and 10 meters east as shown by dashed corner ticks



SCALE 1:24 000  
CONTOUR INTERVAL 10 FEET  
NATIONAL GEODETIC VERTICAL DATUM OF 1929  
THIS MAP COMPLIES WITH NATIONAL MAP ACCURACY STANDARDS  
FOR SALE BY U. S. GEOLOGICAL SURVEY, RESTON, VIRGINIA 22092  
AND WISCONSIN GEOLOGICAL AND NATURAL HISTORY SURVEY, MADISON, WISCONSIN 53706  
AND BY THE GEOLOGICAL SURVEY DIVISION  
MICHIGAN DEPARTMENT OF NATURAL RESOURCES, LANSING, MICHIGAN 48909  
A FOLDER DESCRIBING TOPOGRAPHIC MAPS AND SYMBOLS IS AVAILABLE ON REQUEST



There may be private inholdings within the boundaries of the National or State reservations shown on this map

ROAD CLASSIFICATION  
Primary highway, hard surface  
Secondary highway, hard surface  
Interstate Route  
U. S. Route  
State Route  
Light-duty road, hard or improved surface  
Unimproved road

PRESQUE ISLE, WIS.-MICH.  
NW/4 BOULDER JUNCTION 15' QUADRANGLE  
N4607.5-W8937.5/7.5

1981  
DMA 3076 II NW-SERIES V861

MAP AND AIR PHOTO LIBRARY

APR 7 - 1982

University of Wisconsin  
Madison

1981  
copy  
1-1