

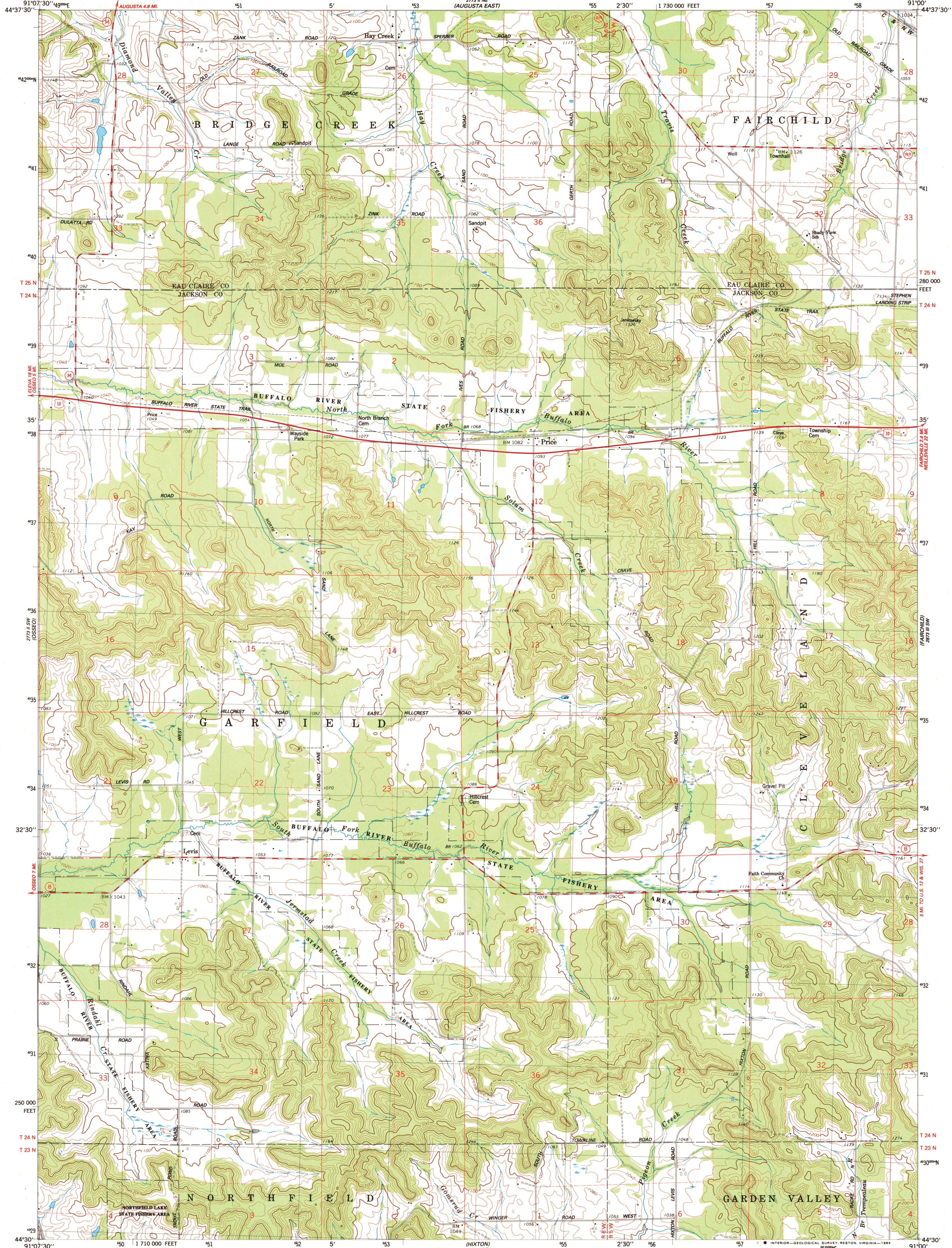
2721 11 W
AUGUSTA WEST

UNITED STATES
DEPARTMENT OF THE INTERIOR
GEOLOGICAL SURVEY

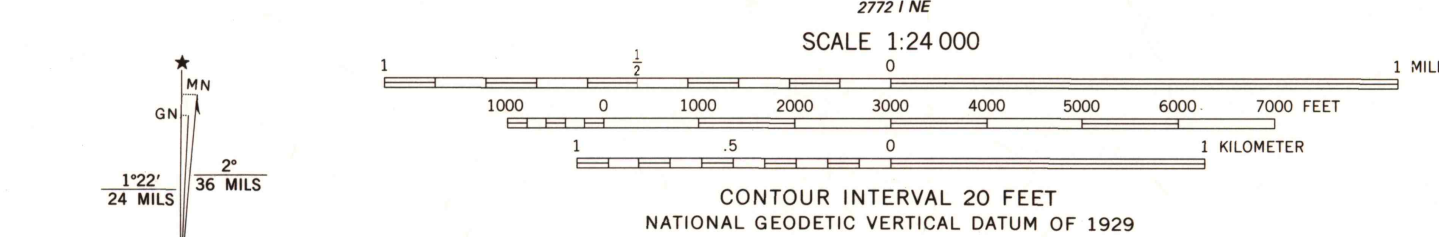
STATE OF WISCONSIN
DIVISION OF HIGHWAYS
GEOLOGICAL AND NATURAL HISTORY SURVEY

PRICE QUADRANGLE
WISCONSIN
7.5 MINUTE SERIES (TOPOGRAPHIC)
SE/4 OSSBO 15' QUADRANGLE

2723 11 W
AUGUSTA EAST



Maped, edited, and published by the Geological Survey
in cooperation with the Wisconsin Division of Highways
and Wisconsin Geological and Natural History Survey
Control by USGS and NOS/NOAA
Topography by photogrammetric methods from aerial photographs
taken 1966. Revised from aerial photographs taken 1982
Field checked 1984. Map edited 1984
Projection and 10,000-foot grid ticks: Wisconsin coordinate
system, central zone (Lambert conformal conic)
1000-meter Universal Transverse Mercator grid, zone 15
1927 North American Datum
To place on the predicted North American Datum 1983,
move the projection lines 7 meters north and
12 meters east as shown by dashed corner ticks
There may be private inholdings within the boundaries of
the National or State reservations shown on this map
Fine red dashed lines indicate selected fence and field lines where
generally visible on aerial photographs. This information is unchecked



ROAD CLASSIFICATION
Primary highway, light-duty road, hard or improved surface
Secondary highway, hard surface
Unimproved road
Interstate Route U. S. Route State Route

PRICE, WIS.
SE/4 OSSBO 15' QUADRANGLE
44091-E1-TF-024

1984
DMA 2773 11 SE-SERIES V861

RETURN TO:
USGS AND HISTORICAL MAP ARCHIVES