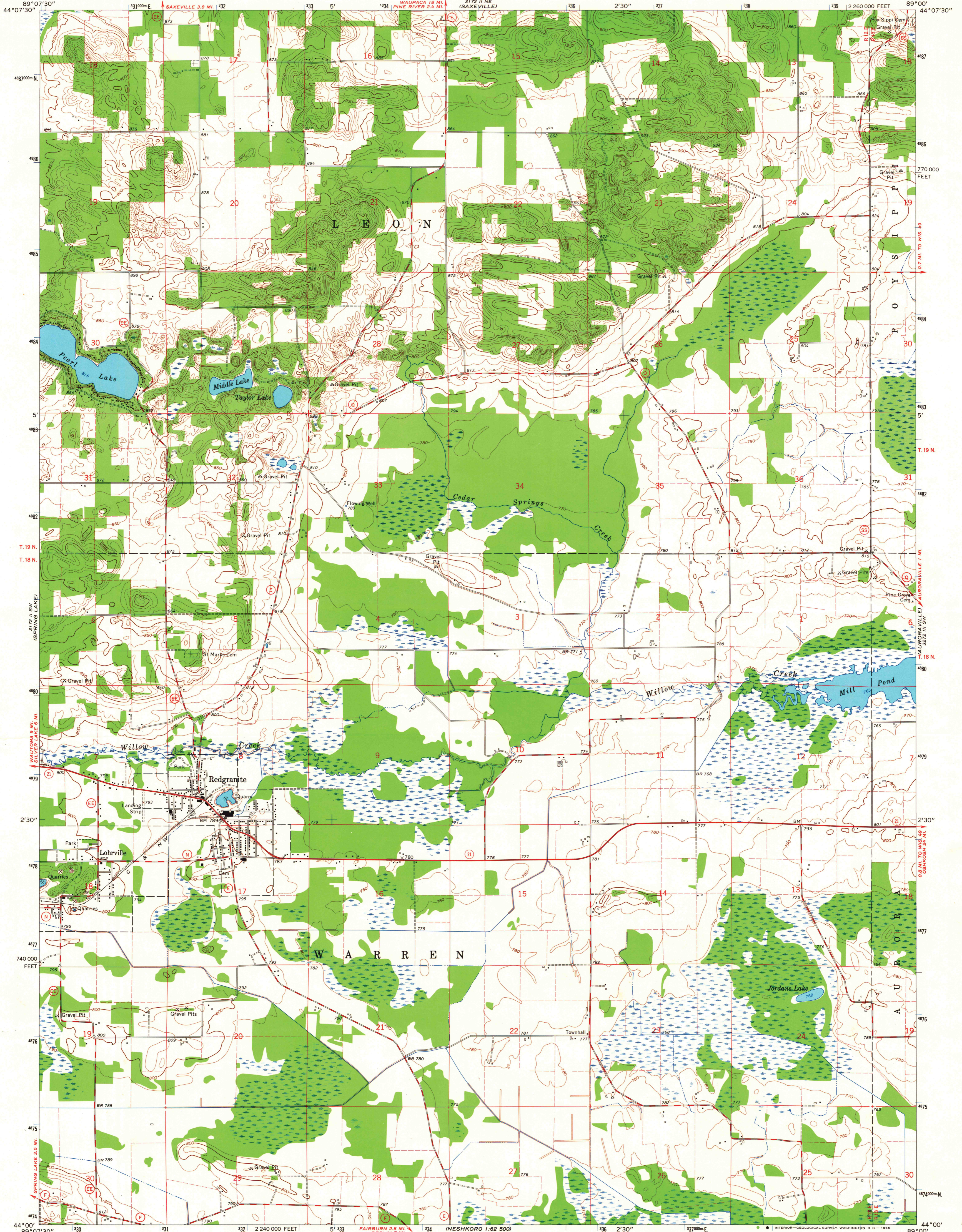
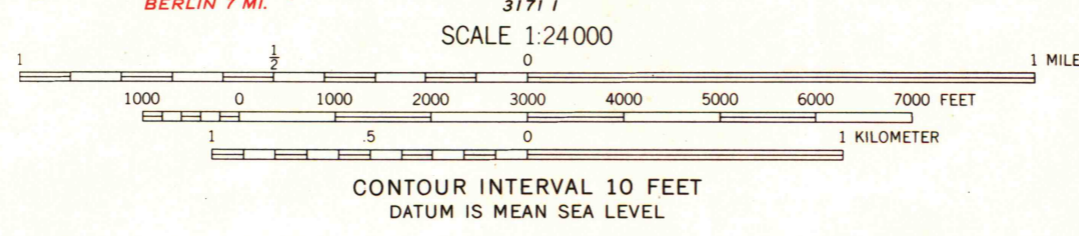


UNITED STATES
DEPARTMENT OF THE INTERIOR
GEOLOGICAL SURVEY

REDGRANITE QUADRANGLE
WISCONSIN - WAUSHARA CO.
7.5 MINUTE SERIES (TOPOGRAPHIC)
SE/4 REDGRANITE 15' QUADRANGLE



Mapped, edited, and published by the Geological Survey in cooperation with the Wisconsin Highway Commission and Wisconsin Geological and Natural History Survey. Control by USGS and USC&GS. Topography by photogrammetric methods from aerial photographs taken 1960. Field checked 1961. Polyconic projection. 1927 North American datum 10,000-foot grid based on Wisconsin coordinate system, south zone 1000-meter Universal Transverse Mercator grid ticks, zone 16, shown in blue. Fine red dashed lines indicate selected fence and field lines where generally visible on aerial photographs. This information is unchecked.



ROAD CLASSIFICATION
Heavy-duty ——— Light-duty ———
Medium-duty ——— Unimproved dirt - - - - -
State Route ○



THIS MAP COMPLIES WITH NATIONAL MAP ACCURACY STANDARDS FOR SALE BY U.S. GEOLOGICAL SURVEY, WASHINGTON, D. C. 20242 AND BY THE WISCONSIN GEOLOGICAL AND NATURAL HISTORY SURVEY, MADISON, WISCONSIN A FOLDER DESCRIBING TOPOGRAPHIC MAPS AND SYMBOLS IS AVAILABLE ON REQUEST

REDGRANITE, WIS.
SE/4 REDGRANITE 15' QUADRANGLE
N4400-W8900/7.5
1961
AMS 3172 II SE-SERIES V861

1961 Copy 1-1