

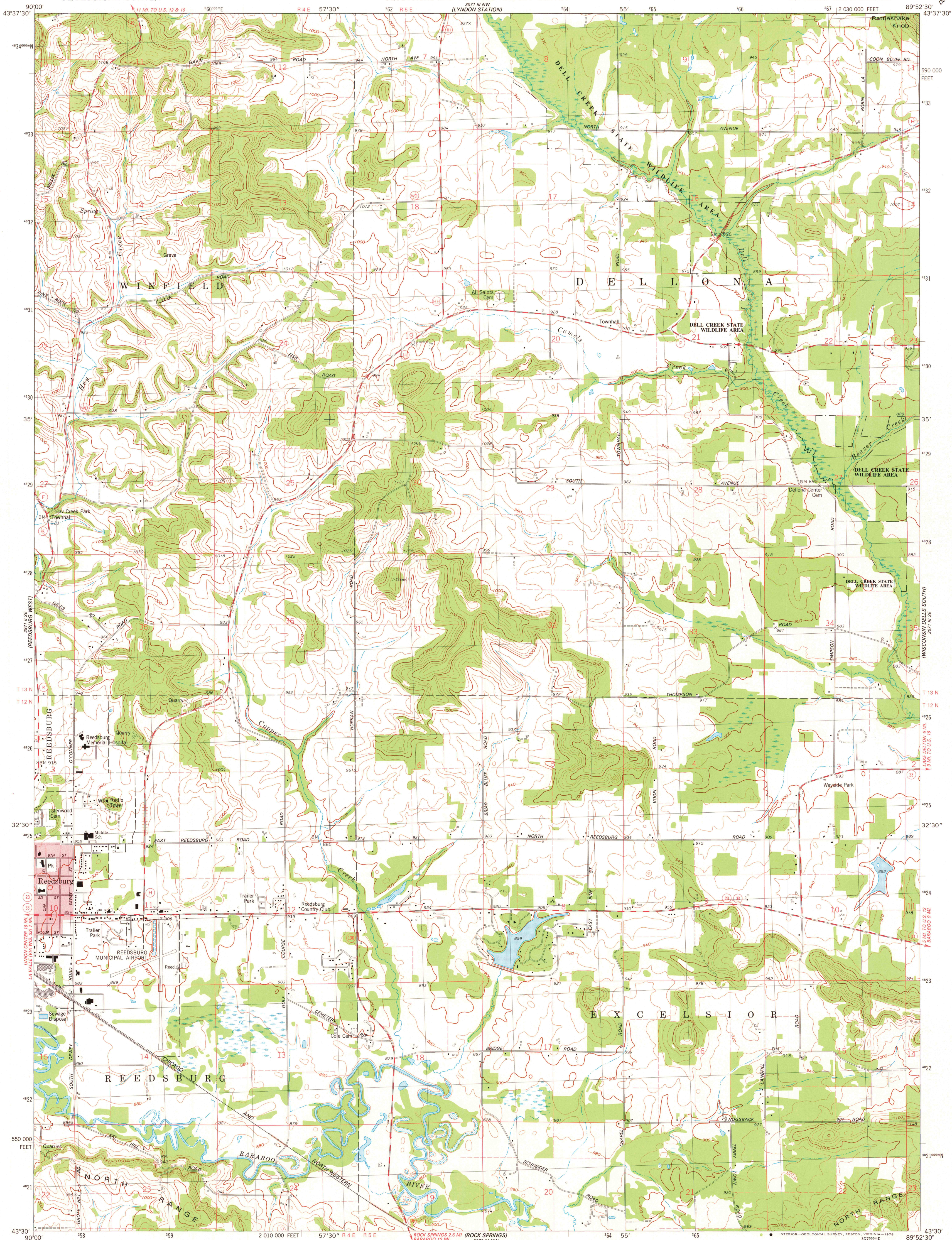
3071 III SW  
(POPLAR BLVD)

UNITED STATES  
DEPARTMENT OF THE INTERIOR  
GEOLOGICAL SURVEY

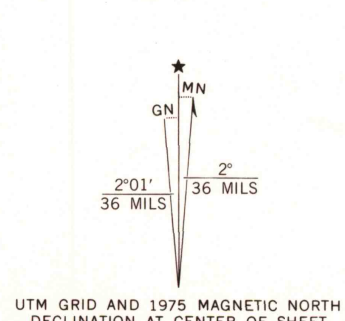
STATE OF WISCONSIN  
DIVISION OF HIGHWAYS  
GEOLOGICAL AND NATURAL HISTORY SURVEY  
(LYNDON STATION)

REEDSBURG EAST QUADRANGLE  
WISCONSIN—SAUK CO.  
7.5 MINUTE SERIES (TOPOGRAPHIC)

3071 III SW  
(WISCONSIN DELLS NORTH)



Maped, edited, and published by the Geological Survey  
in cooperation with the Wisconsin Division of Highways  
and Wisconsin Geological and Natural History Survey  
Control by USGS and NOS/NOAA  
Topography by photogrammetric methods from aerial  
photographs taken 1975. Field checked 1975  
Projection and 10,000-foot grid ticks: Wisconsin coordinate  
system, south zone (Lambert conformal conic)  
1000-meter Universal Transverse Mercator grid, zone 16  
1927 North American datum  
Red tint indicates area in which only landmark buildings are shown  
Fine red dashed lines indicate selected fence and field lines where  
generally visible on aerial photographs. This information is unchecked



THIS MAP COMPLIES WITH NATIONAL MAP ACCURACY STANDARDS  
FOR SALE BY U.S. GEOLOGICAL SURVEY, RESTON, VIRGINIA 22092  
AND WISCONSIN GEOLOGICAL AND NATURAL HISTORY SURVEY, MADISON, WISCONSIN 53706  
A FOLDER DESCRIBING TOPOGRAPHIC MAPS AND SYMBOLS IS AVAILABLE ON REQUEST



ROAD CLASSIFICATION  
Primary highway, hard surface ———— Light-duty road, hard or improved surface  
Secondary highway, hard surface ———— Unimproved road  
Interstate Route ———— U. S. Route ———— State Route

REEDSBURG EAST, WIS. AUG 16 1978  
SW/4 WISCONSIN DELLS 15' QUADRANGLE  
N4330 — W8952.5/7.5  
1975  
AMS 3071 III SW—SERIES V861