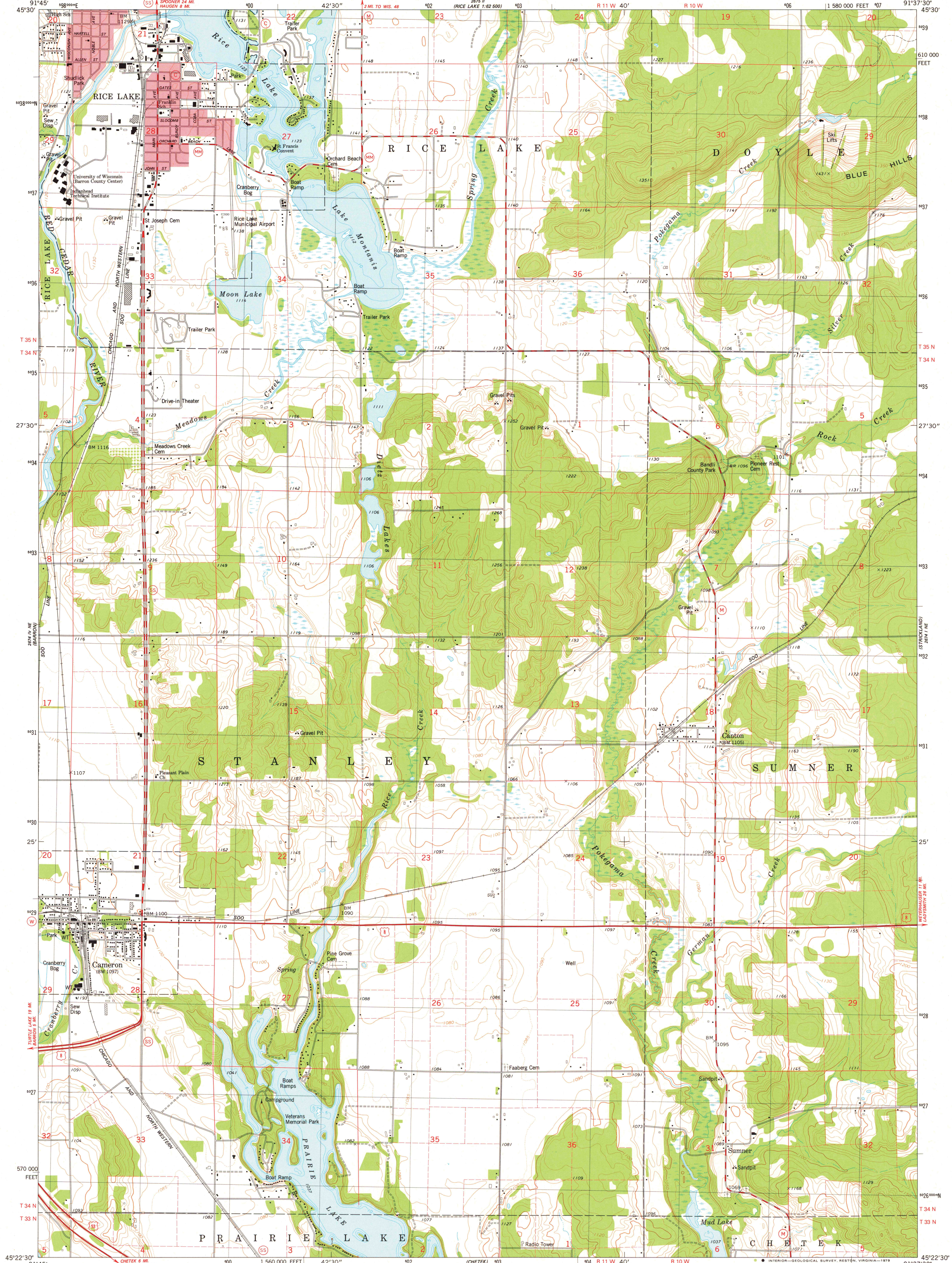


UNITED STATES  
DEPARTMENT OF THE INTERIOR  
GEOLOGICAL SURVEY

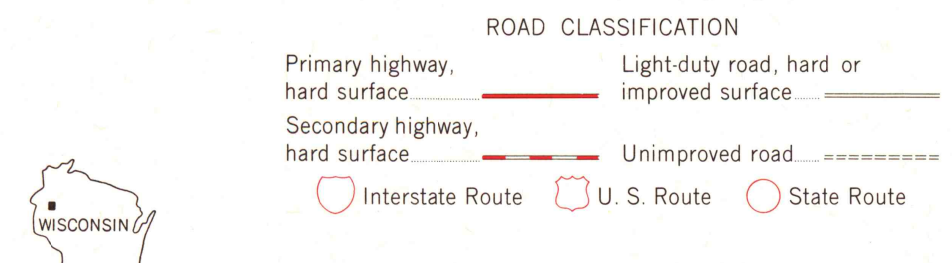
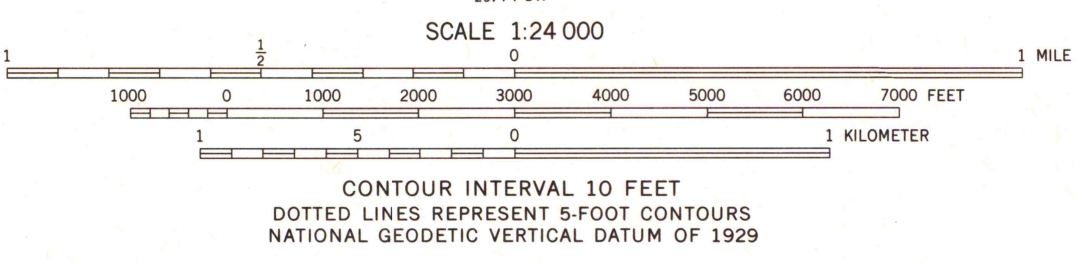


STATE OF WISCONSIN  
DIVISION OF HIGHWAYS  
GEOLOGICAL AND NATURAL HISTORY SURVEY

RICE LAKE SOUTH QUADRANGLE  
WISCONSIN-BARRON CO.  
7.5 MINUTE SERIES (TOPOGRAPHIC)  
NW/4 CHETEK 15' QUADRANGLE  
NW/4 CHETEK 15' QUADRANGLE



Maped, edited, and published by the Geological Survey  
in cooperation with the Wisconsin Division of Highways  
and Wisconsin Geological and Natural History Survey  
Control by USGS and NOS/NOAA  
Topography by photogrammetric methods from aerial photographs  
taken 1975. Field checked 1976. Map edited 1978  
Hydrography compiled from information furnished by  
Wisconsin Department of Natural Resources  
Projection and 10,000-foot grid ticks: Wisconsin coordinate  
system, central zone (Lambert conformal conic)  
1000-meter Universal Transverse Mercator grid, zone 15  
1927 North American datum  
Red tint indicates areas in which only landmark buildings are shown  
Fine red dashed lines indicate selected fence and field lines where  
generally visible on aerial photographs. This information is unchecked



RICE LAKE SOUTH, WIS.  
NW/4 CHETEK 15' QUADRANGLE  
N4522.5-W9137.5/7.5

1978  
AMS 2674 1 NW-SERIES V861

MAP AND AIR PHOTO  
LIBRARY

SEP 17 1979

University of Wisconsin  
Madison