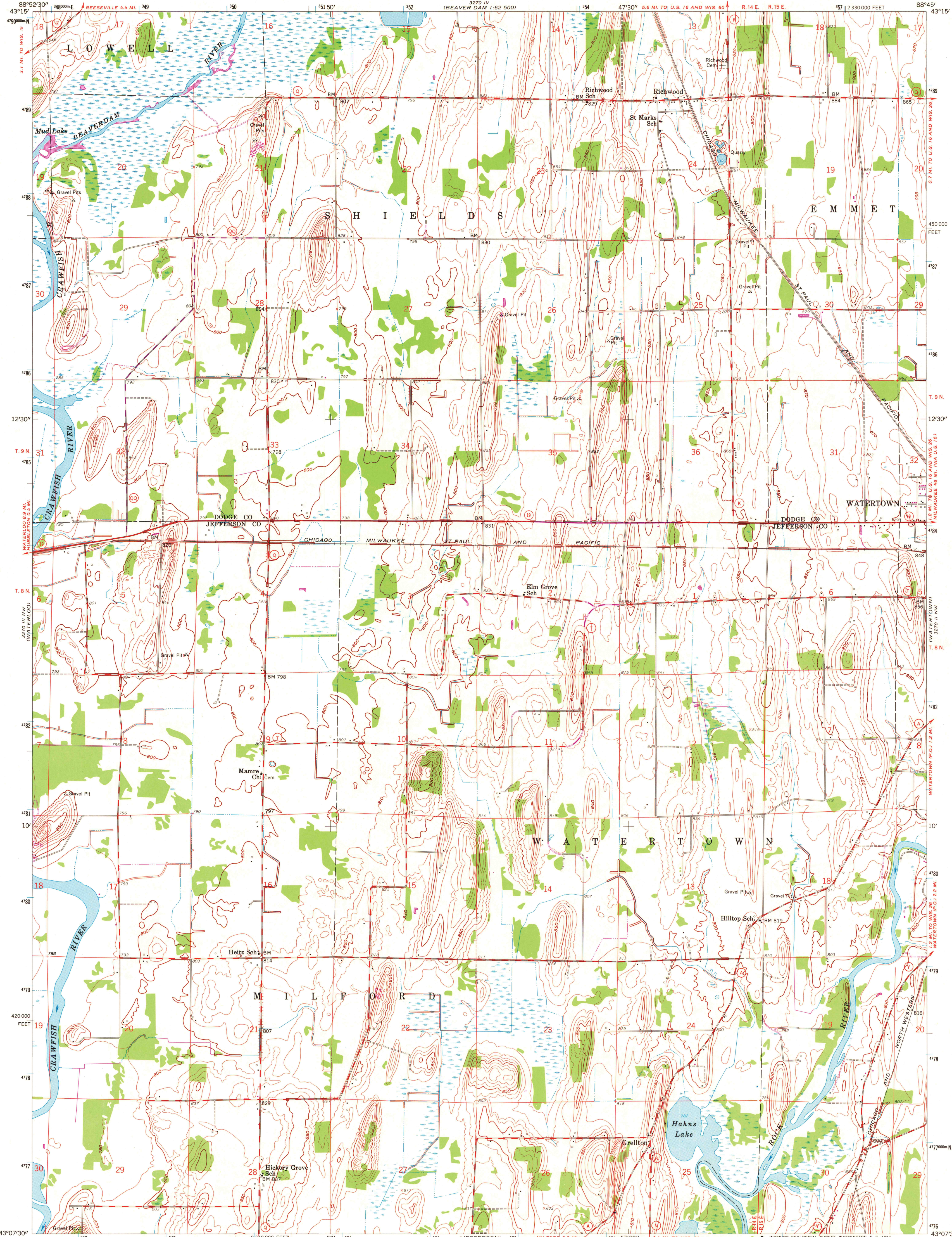


3270 IV  
(BEAVER DAM 1:62 500)

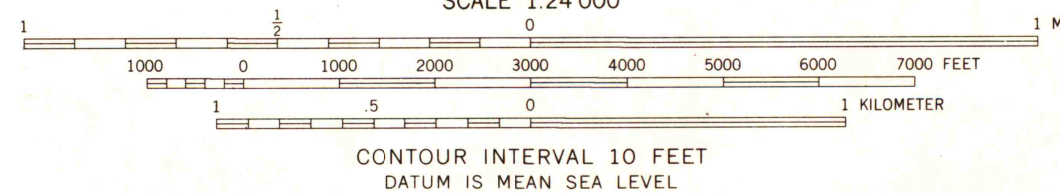


Mapped, edited, and published by the Geological Survey  
Control by USGS and USC&GS

Topography from aerial photographs by photogrammetric methods  
Aerial photographs taken 1954-1955. Field check 1959  
Polyconic projection. 1927 North American datum  
10,000-foot grid based on Wisconsin coordinate system, south zone  
1000-meter Universal Transverse Mercator grid ticks,  
zone 16, shown in blue

Revisions shown in purple compiled from aerial photographs  
taken 1971. This information not field checked

UTM GRID AND 1971 MAGNETIC NORTH  
DECLINATION AT CENTER OF SHEET



CONTOUR INTERVAL 10 FEET  
DATUM IS MEAN SEA LEVEL

ROAD CLASSIFICATION

- Heavy-duty ———
- Medium-duty ———
- Light-duty ———
- Unimproved dirt ———
- Slate Route ○



RICHWOOD, WIS.  
NE 1/4 WATERLOO 15' QUADRANGLE  
N 4307.5—W 8845/7.5

1959  
PHOTOREVISED 1971  
AMS 3270 III NE—SERIES V861

AUG 17 1972

University of Wisconsin

1971  
copy  
1-1

MAP AND AIR PHOTO