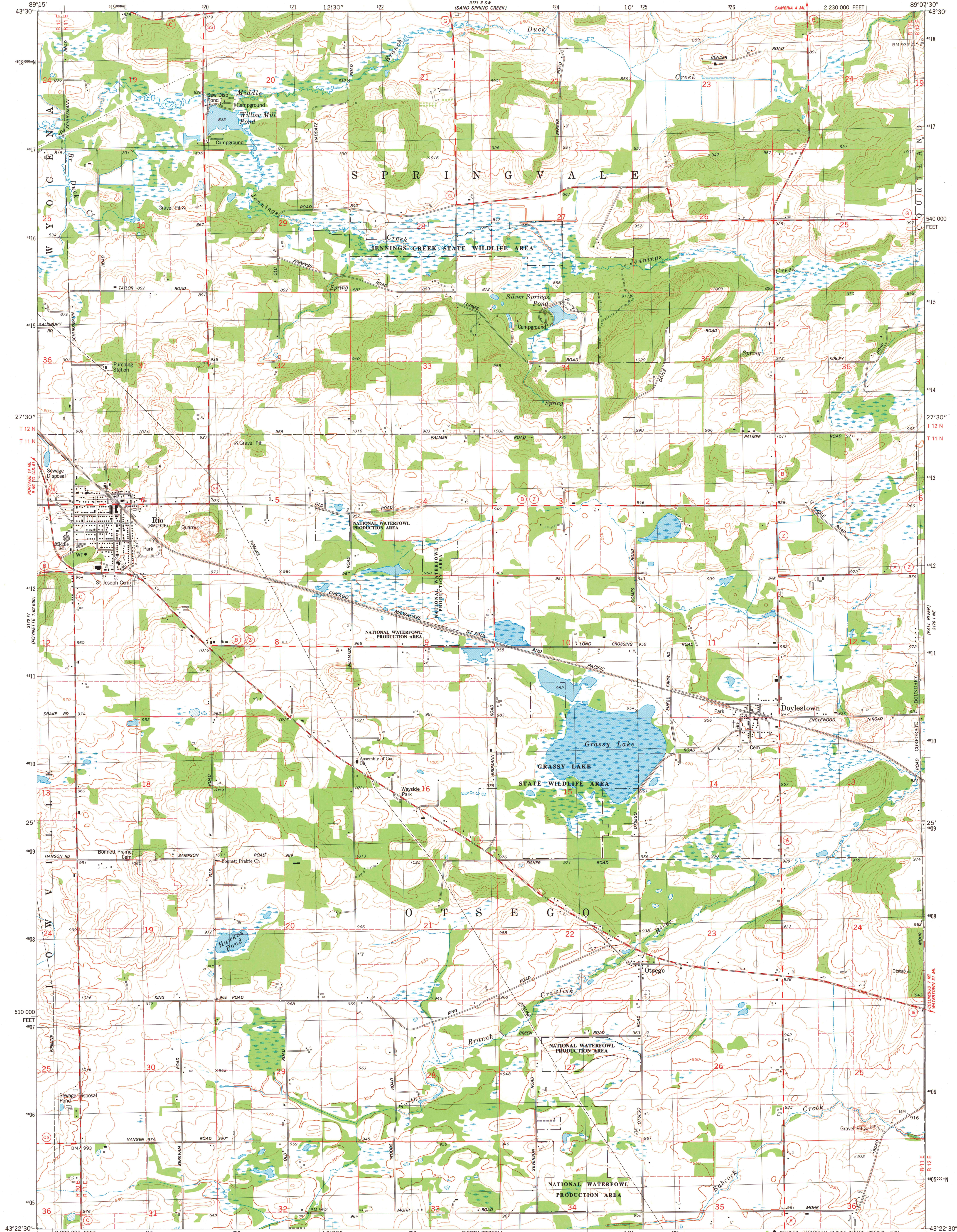


UNITED STATES
DEPARTMENT OF THE INTERIOR
GEOLOGICAL SURVEY

RIO QUADRANGLE
WISCONSIN-COLUMBIA CO.
7.5 MINUTE SERIES (TOPOGRAPHIC)
NW/4 COLUMBUS 15' QUADRANGLE

3171 SE
(MADISON)



Mapped, edited, and published by the Geological Survey

Control by USGS and NOS/NOAA

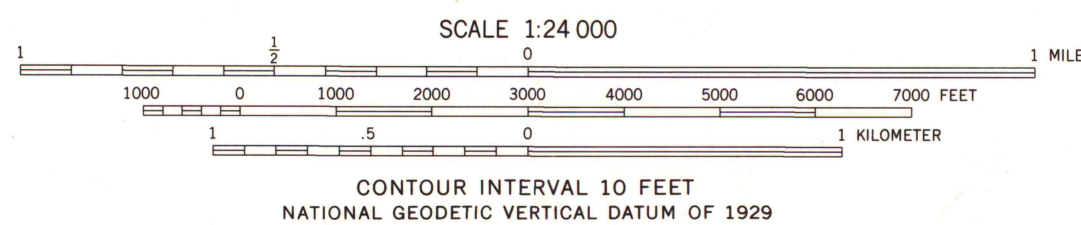
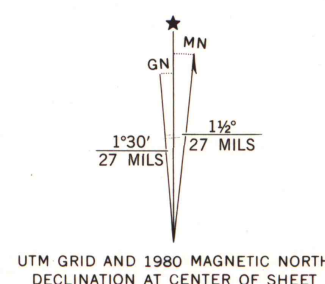
Topography by photogrammetric methods from aerial photographs taken 1975. Field checked 1976. Map edited 1980

Projection and 10,000-foot grid ticks: Wisconsin coordinate system, south zone (Lambert conformal conic) 1000-meter Universal Transverse Mercator grid, zone 16 1927 North American Datum

To place on the predicted North American Datum 1983 move the projection lines 5 meters north and 9 meters east as shown by dashed corner ticks

There may be private inholdings within the boundaries of the National or State reservations shown on this map

Fine red dashed lines indicate selected fence and field lines where generally visible on aerial photographs. This information is unchecked



THIS MAP COMPLIES WITH NATIONAL MAP ACCURACY STANDARDS FOR SALE BY U.S. GEOLOGICAL SURVEY, RESTON, VIRGINIA 22092 AND WISCONSIN GEOLOGICAL AND NATURAL HISTORY SURVEY, MADISON, WISCONSIN 53706 A FOLDER DESCRIBING TOPOGRAPHIC MAPS AND SYMBOLS IS AVAILABLE ON REQUEST



ROAD CLASSIFICATION	
Primary highway, hard surface	Light-duty road, hard or improved surface
Secondary highway, hard surface	Unimproved road
Interstate Route	U.S. Route
	State Route

RIO, WIS.
NW/4 COLUMBUS 15' QUADRANGLE
N4322.5-W8907.5/7.5
1980
DMA 3170 1 NW-SERIES V861

MAP AND AIR PHOTO LIBRARY

JUN 15 1981

University of Wisconsin
Madison

1980
copy
1-1