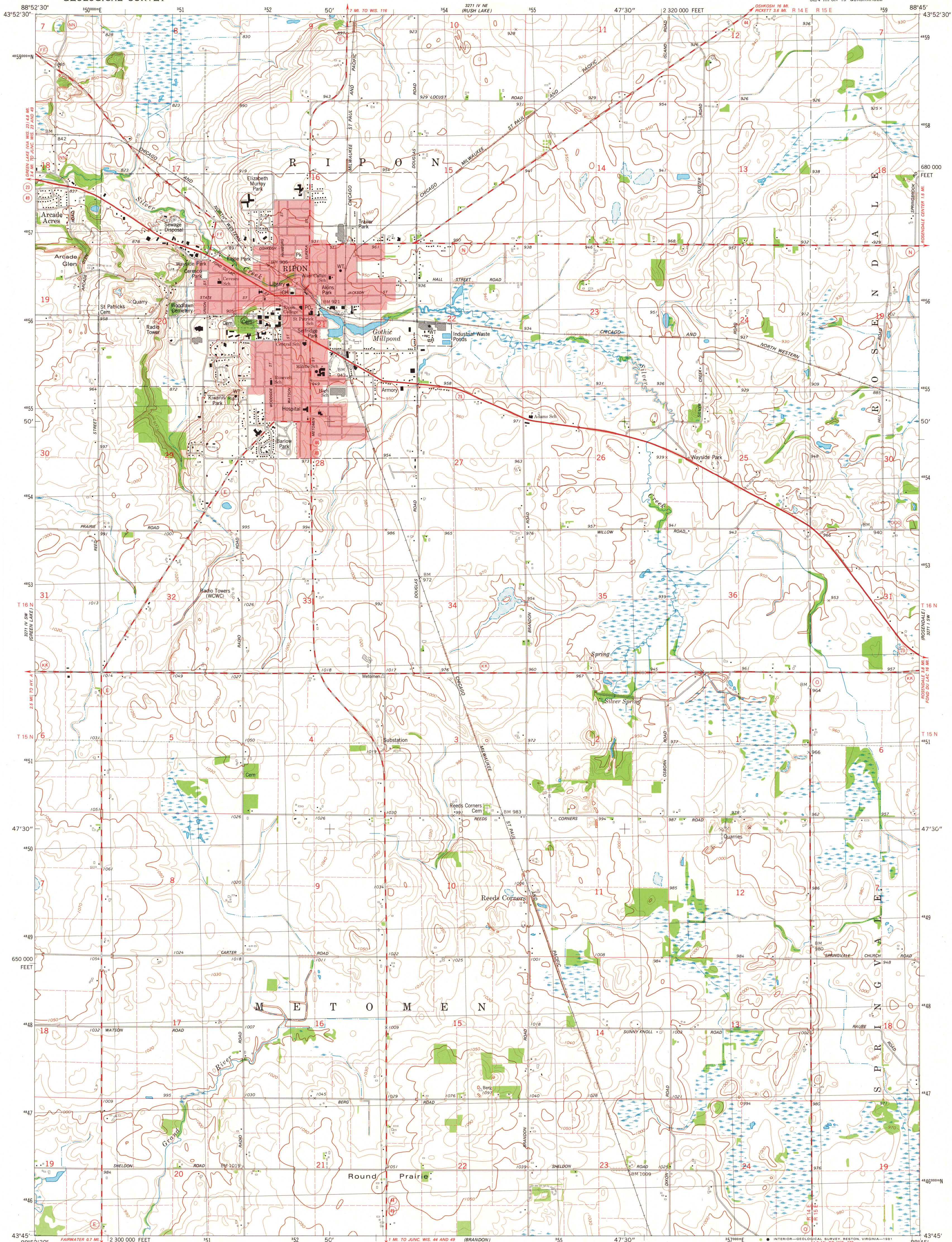


UNITED STATES  
DEPARTMENT OF THE INTERIOR  
GEOLOGICAL SURVEY

RIPON QUADRANGLE  
WISCONSIN-FOND DU LAC CO.  
7.5 MINUTE SERIES (TOPOGRAPHIC)

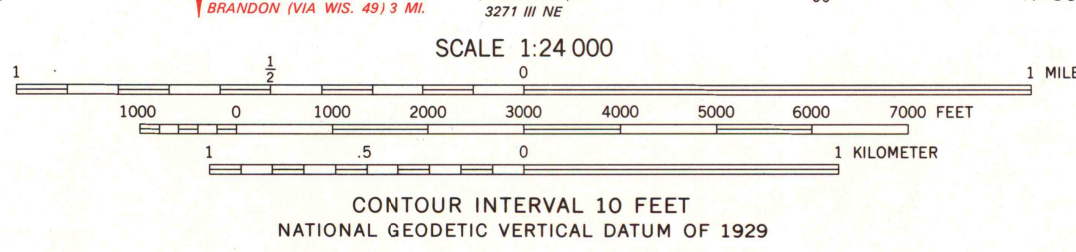


Mapped, edited, and published by the Geological Survey

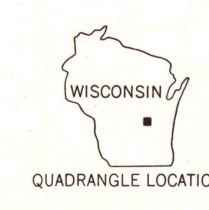
Control by USGS and NOS/NOAA  
Topography by photogrammetric methods from aerial photographs  
taken 1976. Field checked 1976. Map edited 1980

Projection and 10,000-foot grid ticks: Wisconsin coordinate  
system, south zone (Lambert conformal conic)  
1000-meter Universal Transverse Mercator grid, zone 16  
1927 North American Datum  
To place on the predicted North American Datum 1983  
move the projection lines 5 meters north and  
9 meters east as shown by dashed corner ticks

Red tint indicates areas in which only landmark buildings are shown  
Fine red dashed lines indicate selected fence and field lines where  
generally visible on aerial photographs. This information is unchecked



ROAD CLASSIFICATION  
Primary highway, hard surface  
Secondary highway, hard surface  
Unimproved road  
Interstate Route  
U. S. Route  
State Route



THIS MAP COMPLIES WITH NATIONAL MAP ACCURACY STANDARDS  
FOR SALE BY U. S. GEOLOGICAL SURVEY, RESTON, VIRGINIA 22092  
AND WISCONSIN GEOLOGICAL AND NATURAL HISTORY SURVEY, MADISON, WISCONSIN 53706  
A FOLDER DESCRIBING TOPOGRAPHIC MAPS AND SYMBOLS IS AVAILABLE ON REQUEST

RIPON, WIS.  
SE/4 RIPON 15' QUADRANGLE  
N4345-W8845/7.5

1980

DMA 3271 IV SE-SERIES V861

1980  
copy  
1-1

MAP AND AIR PHOTO  
LIBRARY

FEB 13 1981

University of Wisconsin  
Madison