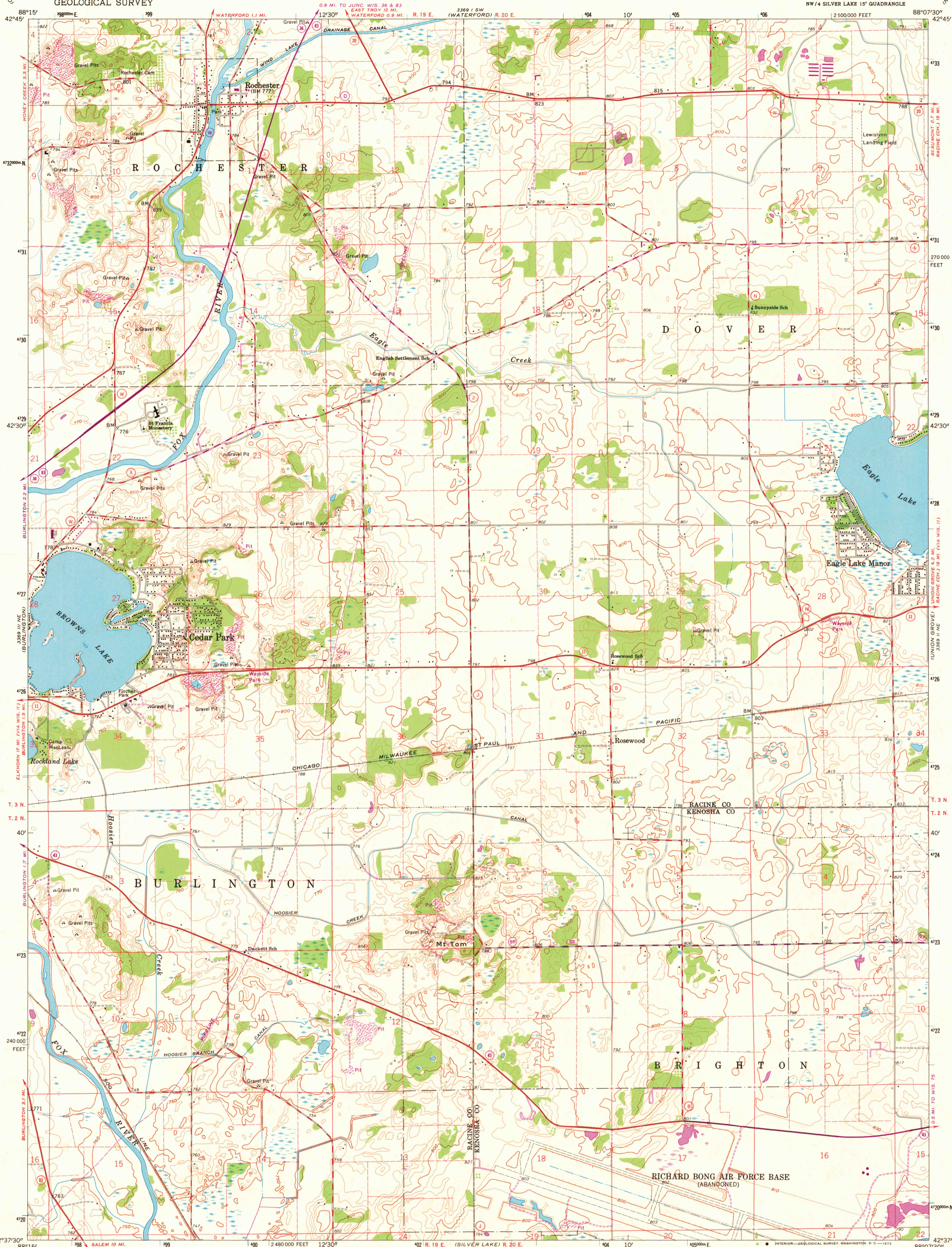


UNITED STATES
DEPARTMENT OF THE INTERIOR
GEOLOGICAL SURVEY

ROCHESTER QUADRANGLE
WISCONSIN
7.5 MINUTE SERIES (TOPOGRAPHIC)
NW 1/4 SILVER LAKE 15' QUADRANGLE



Mapped, edited, and published by the Geological Survey

Control by USGS and USC&GS

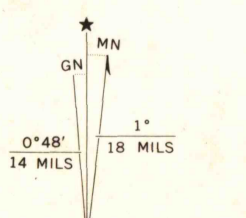
Topography from aerial photographs by photogrammetric methods

Aerial photographs taken 1955. Field check 1960

Polyconic projection. 1927 North American datum
10,000-foot grid based on Wisconsin coordinate system, south zone
1000-meter Universal Transverse Mercator grid ticks,
zone 16, shown in blue

Fine red dashed lines indicate selected fence and field lines where
generally visible on aerial photographs. This information is unchecked

Revisions shown in purple compiled from aerial photographs
taken 1971. This information not field checked



CONTOUR INTERVAL 10 FEET
DATUM IS MEAN SEA LEVEL

ROAD CLASSIFICATION

Heavy-duty ——— Light-duty ———

Medium-duty - - - - - Unimproved dirt - - - - -

○ State Route



WISCONSIN
QUADRANGLE LOCATION

USGS
HISTORICAL FILE
TOPOGRAPHIC DIVISION

ROCHESTER, WIS.
NW 1/4 SILVER LAKE 15' QUADRANGLE
N 4237.5 - W 8807.5/7.5

1960
PHOTOREVISED 1971
AMS 3369 II NW - SERIES V861

DEC 1 2 1972

2777

THIS MAP COMPLIES WITH NATIONAL MAP ACCURACY STANDARDS
FOR SALE BY U. S. GEOLOGICAL SURVEY, WASHINGTON, D. C. 20242
AND BY THE WISCONSIN GEOLOGICAL AND NATURAL HISTORY SURVEY, MADISON, WISCONSIN 53706
A FOLDER DESCRIBING TOPOGRAPHIC MAPS AND SYMBOLS IS AVAILABLE ON REQUEST