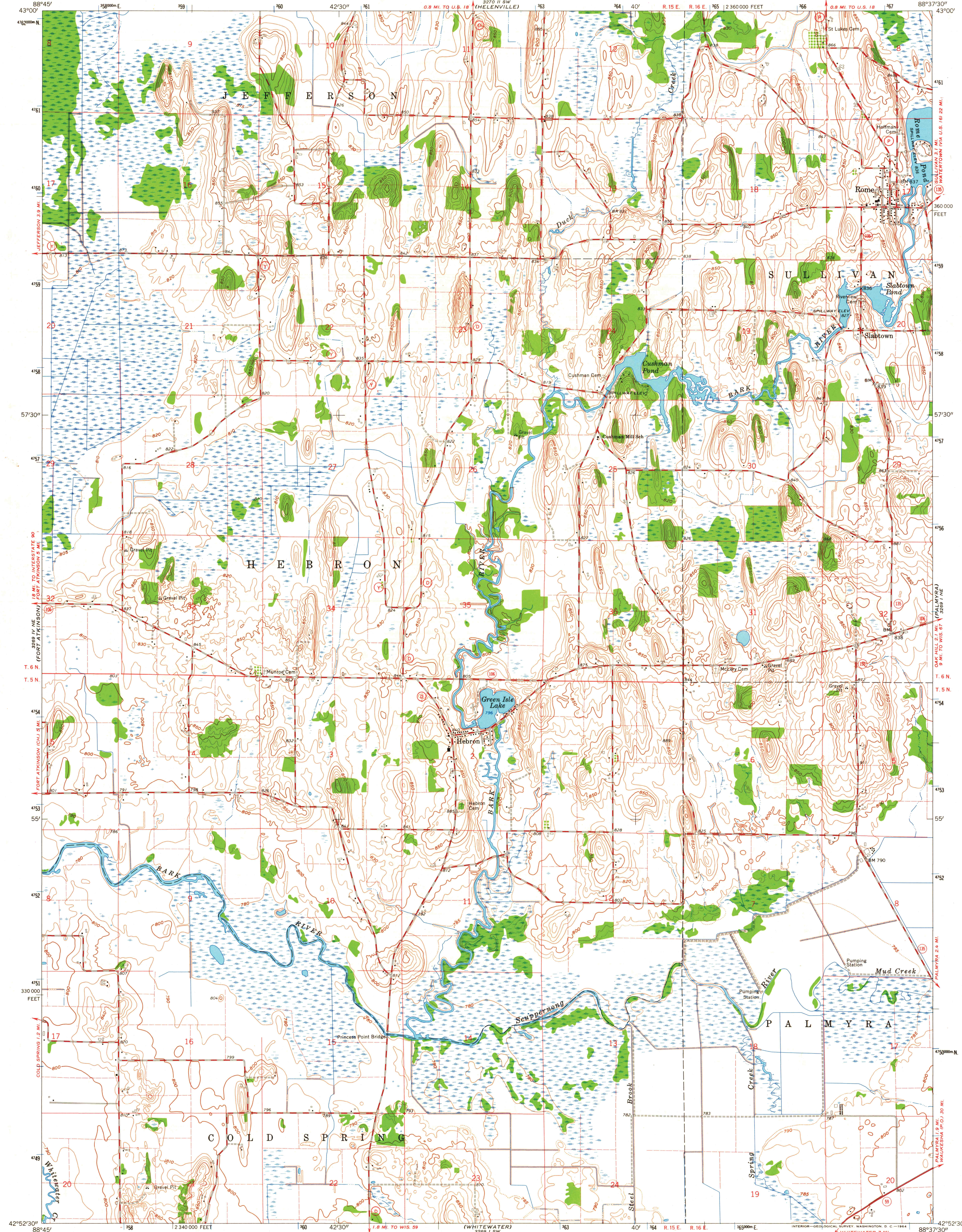
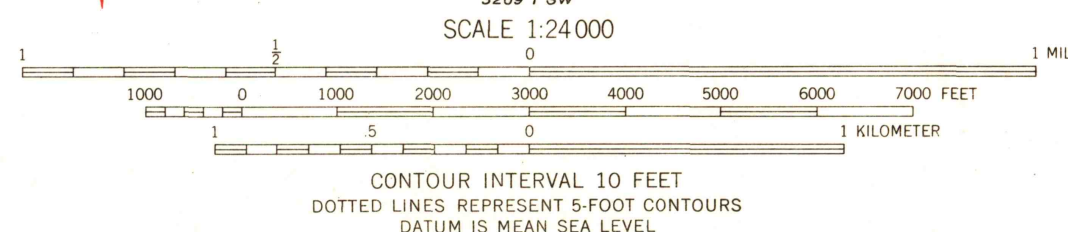
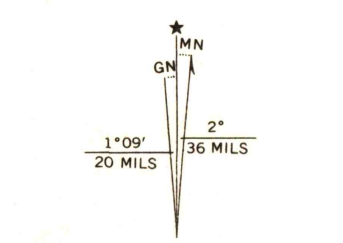


UNITED STATES
DEPARTMENT OF THE INTERIOR
GEOLOGICAL SURVEY

ROME QUADRANGLE
WISCONSIN-JEFFERSON CO.
7.5 MINUTE SERIES (TOPOGRAPHIC)
NW 1/4 WHITEWATER 15' QUADRANGLE



Mapped, edited, and published by the Geological Survey
Control by USGS and USC&GS
Topography by photogrammetric methods from aerial
photographs taken 1955. Field checked 1960
Polyconic projection, 1927 North American datum
10,000-foot grid based on Wisconsin coordinate system, south zone
1000-meter Universal Transverse Mercator grid ticks,
zone 16, shown in blue
Where omitted, land lines have not been established
Fine red dashed lines indicate selected fence and field lines where
generally visible on aerial photographs. This information is unchecked



THIS MAP COMPLIES WITH NATIONAL MAP ACCURACY STANDARDS
FOR SALE BY U.S. GEOLOGICAL SURVEY, WASHINGTON 25, D.C.
AND BY THE WISCONSIN GEOLOGICAL AND NATURAL HISTORY SURVEY, MADISON 6, WISCONSIN
A FOLDER DESCRIBING TOPOGRAPHIC MAPS AND SYMBOLS IS AVAILABLE ON REQUEST

ROAD CLASSIFICATION
Heavy-duty —————
Medium-duty —————
Light-duty —————
Unimproved dirt —————
State Route ————○———



ROME, WIS.
NW 1/4 WHITEWATER 15' QUADRANGLE
N4252.5-W8837.5/7.5

1960
AMS 3269 1 NW-SERIES V861