

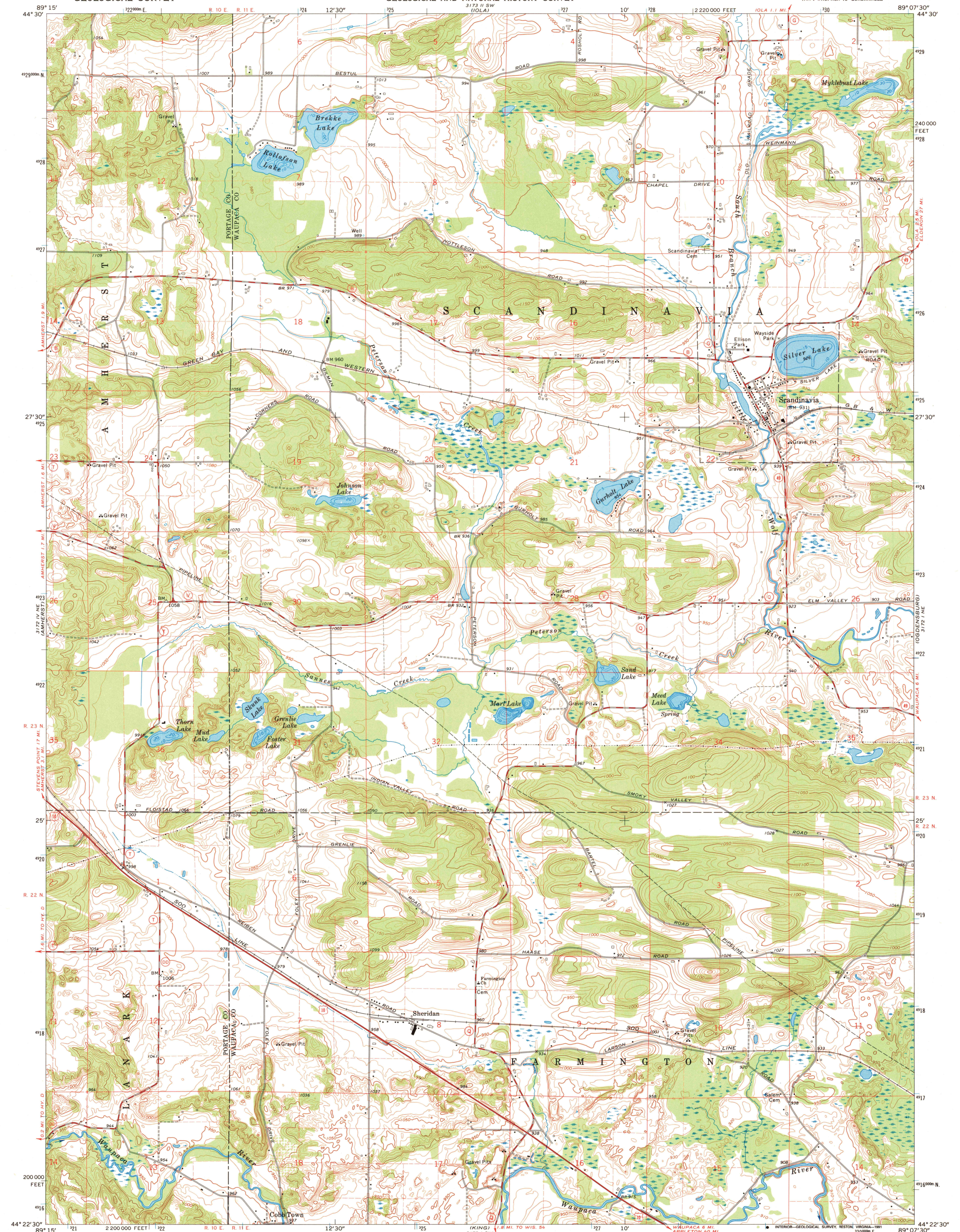
3 1/2 IN. (NEW HOPE)

UNITED STATES  
DEPARTMENT OF THE INTERIOR  
GEOLOGICAL SURVEY

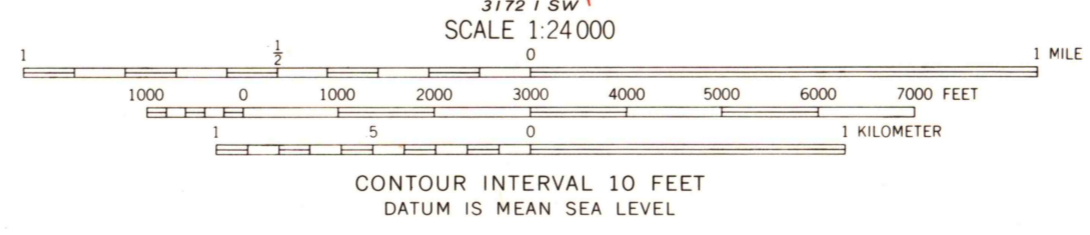
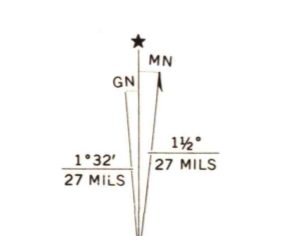
STATE OF WISCONSIN  
STATE HIGHWAY COMMISSION  
GEOLOGICAL AND NATURAL HISTORY SURVEY

SCANDINAVIA QUADRANGLE  
WISCONSIN  
7.5 MINUTE SERIES (TOPOGRAPHIC)  
NW 1/4 WAUPACA 15' QUADRANGLE

3 1/2 IN. (B&G CALLS)



Mapped, edited, and published by the Geological Survey in cooperation with the Wisconsin Highway Commission and Wisconsin Geological and Natural History Survey  
Control by USGS and USC&GS  
Topography by photogrammetric methods from aerial photographs taken 1969. Field checked 1969  
Depth curves compiled from charts furnished by Wisconsin Department of Natural Resources  
Polyconic projection. 1927 North American datum  
10,000-foot grid based on Wisconsin coordinate system, central zone  
1000-meter Universal Transverse Mercator grid ticks, zone 16, shown in blue  
Fine red dashed lines indicate selected fence and field lines where generally visible on aerial photographs. This information is unchecked



ROAD CLASSIFICATION

Primary highway, all weather, hard surface	Light-duty road, all weather, improved surface
Secondary highway, all weather, hard surface	Unimproved road, fair or dry weather

U. S. Route      State Route

THIS MAP COMPLIES WITH NATIONAL MAP ACCURACY STANDARDS  
FOR SALE BY U. S. GEOLOGICAL SURVEY, DENVER, COLORADO 80225, OR RESTON, VIRGINIA 22092  
AND WISCONSIN GEOLOGICAL AND NATURAL HISTORY SURVEY, MADISON, WISCONSIN 53706  
A FOLDER DESCRIBING TOPOGRAPHIC MAPS AND SYMBOLS IS AVAILABLE ON REQUEST

SCANDINAVIA, WIS.  
NW 1/4 WAUPACA 15' QUADRANGLE  
N4422.5-W8907.5/7.5  
1969  
PHOTOINSPECTED 1983  
AMS 3172 1 NW-SERIES V861

