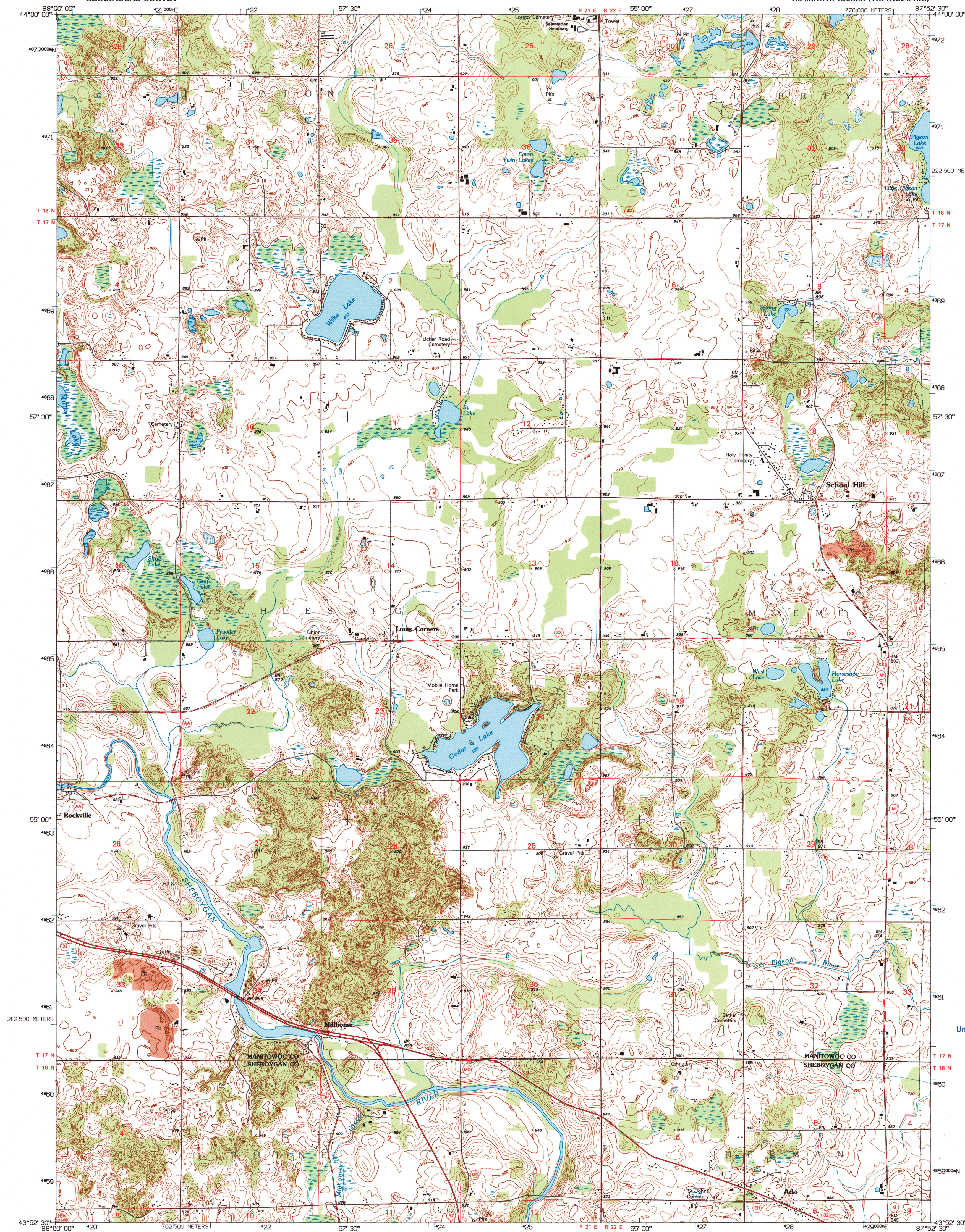


UNITED STATES
DEPARTMENT OF THE INTERIOR
GEOLOGICAL SURVEY

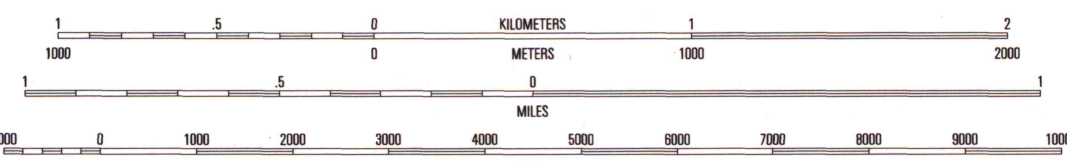
SCHOOL HILL QUADRANGLE
WISCONSIN
7.5-MINUTE SERIES (TOPOGRAPHIC)



A.H. ROBINSON
MAP LIBRARY
AUG 14 1996
University of Wisconsin
Madison

Produced by the United States Geological Survey
Compiled from imagery dated 1951 and 1952. Revised from imagery
dated 1952. PLSS and survey control current as of 1954. Contours
and elevations current as of 1951 and 1952. Map edited 1995
North American Datum of 1983 (NAD 83). Projection and
blue 1000-meter ticks: Universal Transverse Mercator, zone 16
2500-meter ticks: Wisconsin Coordinate System of 1983 (south zone)
North American Datum of 1927 (NAD 27) is shown by dashed
corner ticks. The values of the shift between NAD 83 and NAD 27
for 7.5-minute intersections are obtainable from National Geodetic
Survey NADCON software.

UTM GRID AND 1995 MAGNETIC NORTH
DECLINATION AT CENTER OF SHEET



CONTOUR INTERVAL 10 FEET
NATIONAL GEODETIC VERTICAL DATUM OF 1929

THIS MAP COMPLIES WITH NATIONAL MAP ACCURACY STANDARDS
FOR SALE BY U.S. GEOLOGICAL SURVEY, DENVER, COLORADO 80225, OR RESTON, VIRGINIA 22092
AND WISCONSIN GEOLOGICAL AND NATURAL HISTORY SURVEY, MADISON, WISCONSIN 53706
A FOLDER DESCRIBING TOPOGRAPHIC MAPS AND SYMBOLS IS AVAILABLE ON REQUEST



QUADRANGLE LOCATION

| | | |
|---|---|---|
| 1 | 2 | 3 |
| 4 | 5 | 6 |
| 7 | 8 | 9 |

ROAD CLASSIFICATION
Primary highway Light-duty road, hard or
Secondary highway hard surface
hard surface Unimproved road
Interstate Route U.S. Route State Route

U.S. Regional
Depository Copy
DO NOT DISCARD

SCHOOL HILL, WI
43087-H8-TF-024
1992

DMA 3471 IV NW-SERIES V861

1995
copy
1-1

