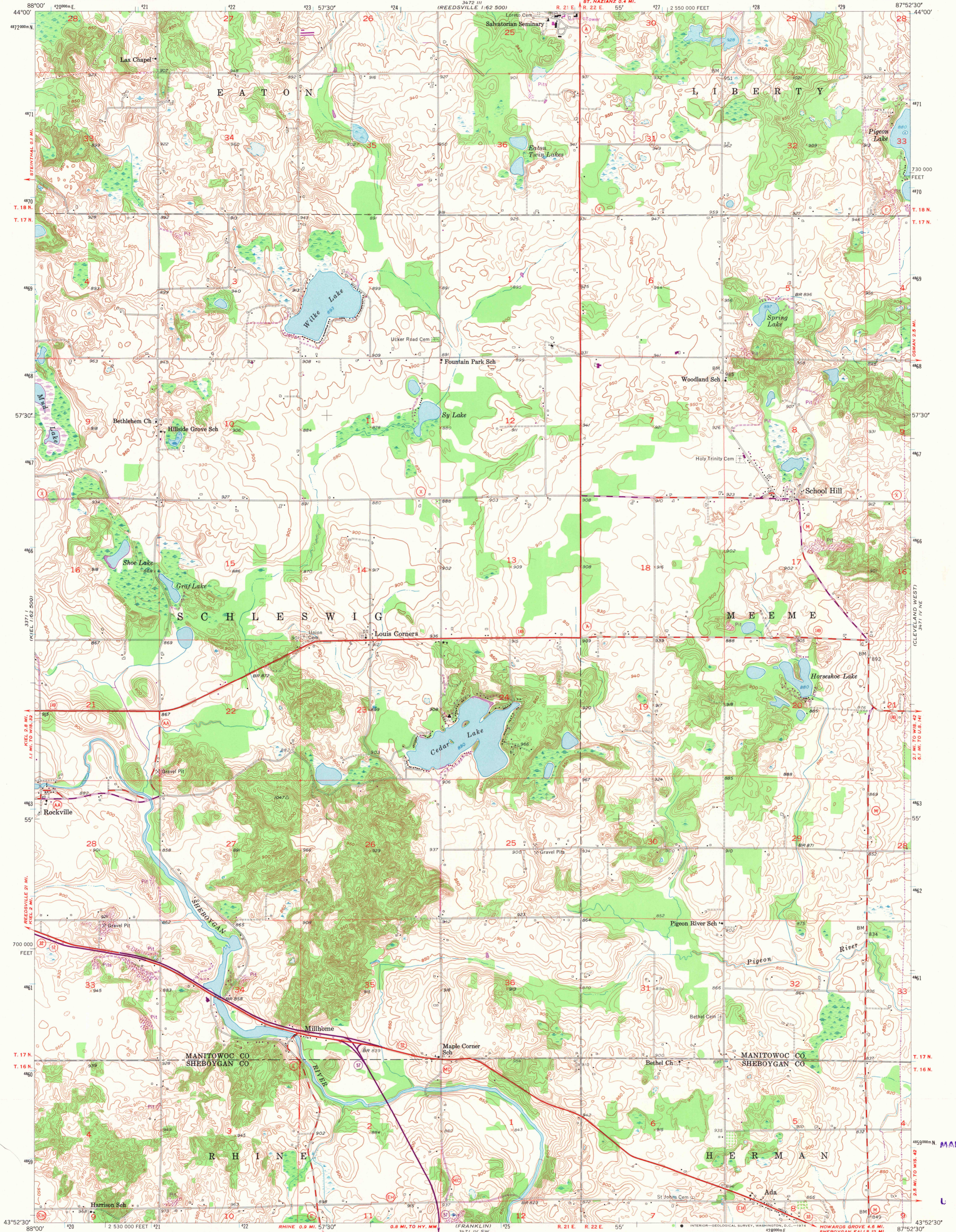
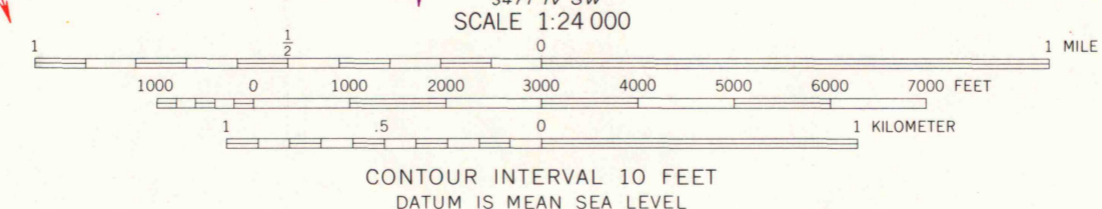
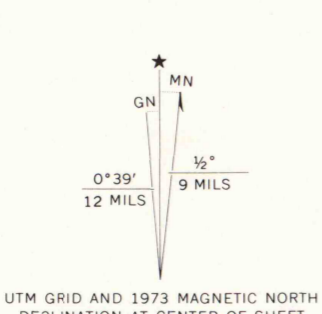


3371 I
KIEL 1:62,500

3371 III
REEDSVILLE 1:62,500



Mapped, edited, and published by the Geological Survey
Control by USGS and USC&GS
Topography from aerial photographs by Kelsh plotter
Aerial photographs taken 1951-1952. Field check 1954
Polyconic projection. 1927 North American datum
10,000-foot grid based on Wisconsin coordinate system,
south zone
1000-meter Universal Transverse Mercator grid ticks,
zone 16, shown in blue
Revisions shown in purple compiled from aerial photographs
taken 1973. This information not field checked



ROAD CLASSIFICATION	
Heavy-duty	Light-duty
Medium-duty	Unimproved dirt
U.S. Route	State Route

SCHOOL HILL, WIS.
NW/4 HOWARDS GROVE 15' QUADRANGLE
N4352.5-W8752.5/7.5

1973
COPY
1-1

THIS MAP COMPLIES WITH NATIONAL MAP ACCURACY STANDARDS
FOR SALE BY U.S. GEOLOGICAL SURVEY, WASHINGTON, D.C. 20242
AND BY THE WISCONSIN GEOLOGICAL AND NATURAL HISTORY SURVEY, MADISON, WISCONSIN 53706
A FOLDER DESCRIBING TOPOGRAPHIC MAPS AND SYMBOLS IS AVAILABLE ON REQUEST

MAP AND AIR PHOTO
LIBRARY
MAY 19 1974
University of Wisconsin

1954
PHOTOREVISED 1973
AMS 3471 IV NW-SERIES W681