

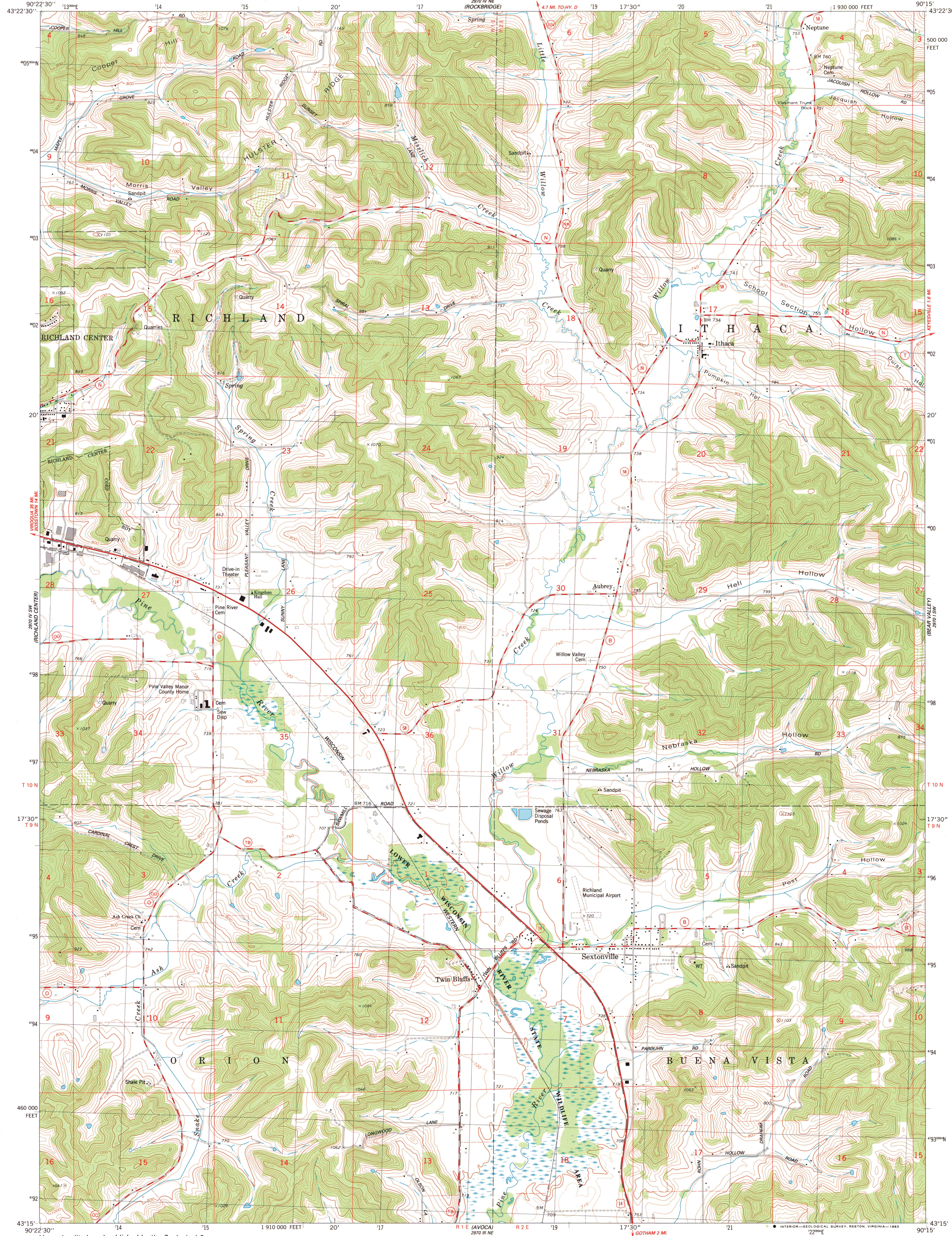
391 NW
(GULLINGHAM)

UNITED STATES
DEPARTMENT OF THE INTERIOR
GEOLOGICAL SURVEY

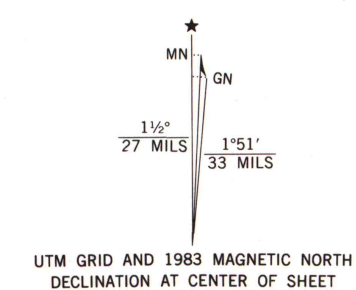
STATE OF WISCONSIN
DIVISION OF HIGHWAYS
GEOLOGICAL AND NATURAL HISTORY SURVEY

SEXTONVILLE QUADRANGLE
WISCONSIN-RICHLAND CO.
7.5 MINUTE SERIES (TOPOGRAPHIC)
SE 1/4 RICHLAND CENTER 15' QUADRANGLE

391 NW
(LINE RIDGE)



Mapped, edited, and published by the Geological Survey in cooperation with the Wisconsin Division of Highways and Wisconsin Geological and Natural History Survey. Control by USGS and NOS/NOAA. Topography by photogrammetric methods from aerial photographs taken 1958. Revised from aerial photographs taken 1979. Field checked 1980. Map edited 1983. Projection and 10,000-foot grid ticks: Wisconsin coordinate system, south zone (Lambert conformal conic). 1000-meter Universal Transverse Mercator grid, zone 15. 1927 North American Datum. To place on the predicted North American Datum 1983, move the projection lines 5 meters north and 11 meters east as shown by dashed corner ticks. There may be private inholdings within the boundaries of the National or State reservations shown on this map. Fine red dashed lines indicate selected fence and field lines where generally visible on aerial photographs. This information is unchecked.



SCALE 1:24 000
1 000 0 1000 2000 3000 4000 5000 6000 7000 FEET
1 KILOMETER
CONTOUR INTERVAL 20 FEET
DOTTED LINES REPRESENT 10-FOOT CONTOURS
NATIONAL GEODETIC VERTICAL DATUM OF 1929
THIS MAP COMPLIES WITH NATIONAL MAP ACCURACY STANDARDS
FOR SALE BY U.S. GEOLOGICAL SURVEY, RESTON, VIRGINIA 22092
AND WISCONSIN GEOLOGICAL AND NATURAL HISTORY SURVEY, MADISON, WISCONSIN 53706
A FOLDER DESCRIBING TOPOGRAPHIC MAPS AND SYMBOLS IS AVAILABLE ON REQUEST



ROAD CLASSIFICATION
Primary highway, hard surface. Light-duty road, hard or improved surface.
Secondary highway, hard surface. Unimproved road.
Interstate Route U.S. Route State Route

A.H. ROBINSON
NOV - 8 1983
University of Wisconsin
Madison

SEXTONVILLE, WIS.
SE 1/4 RICHLAND CENTER 15' QUADRANGLE
N4315-W9015/7.5
1983
DMA 2970 IV SE-SERIES V861

1983
COPY
1-1