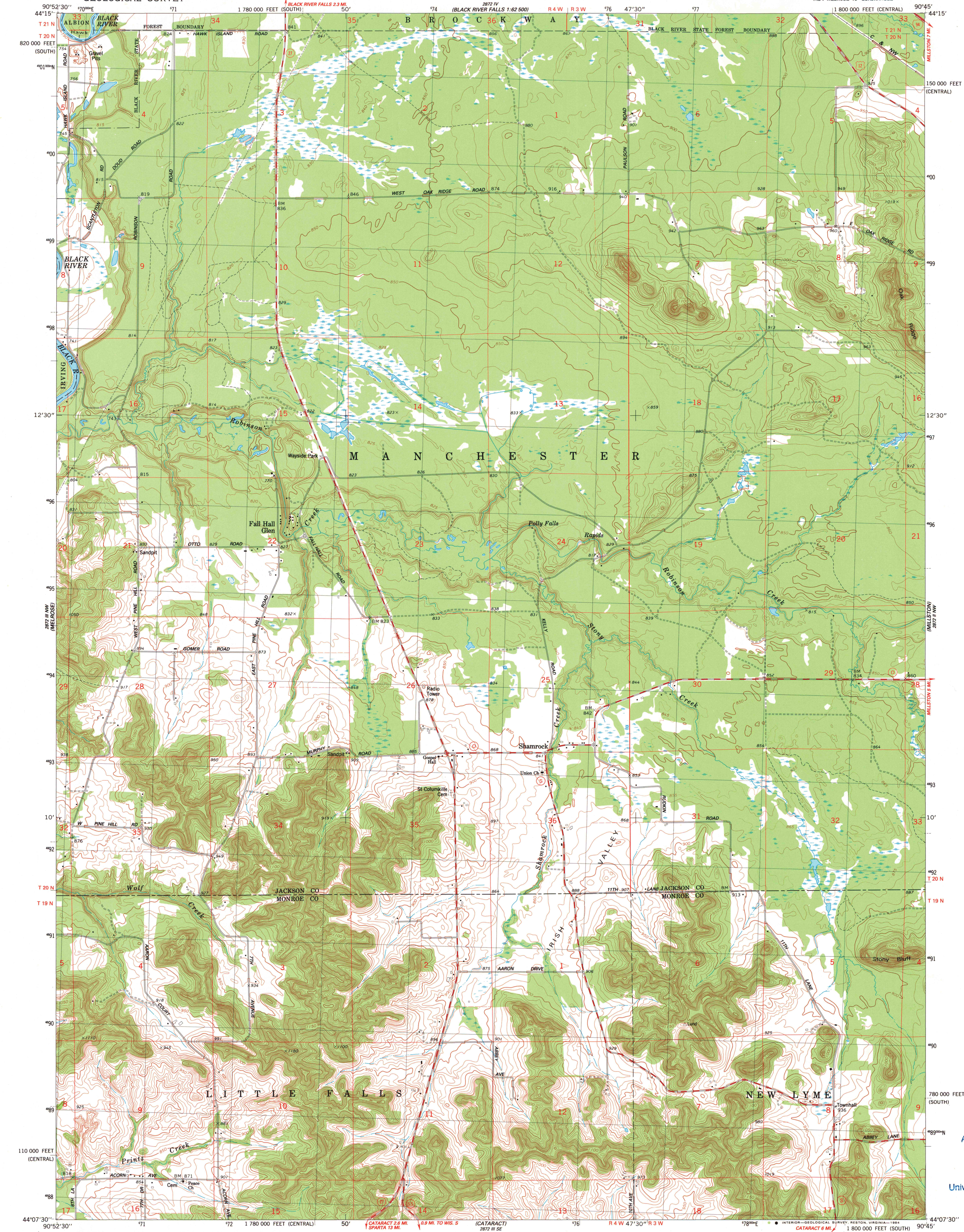


UNITED STATES  
DEPARTMENT OF THE INTERIOR  
GEOLOGICAL SURVEY

SHAMROCK QUADRANGLE  
WISCONSIN  
7.5 MINUTE SERIES (TOPOGRAPHIC)  
NE 4 MELROSE 15' QUADRANGLE



Mapped, edited, and published by the Geological Survey

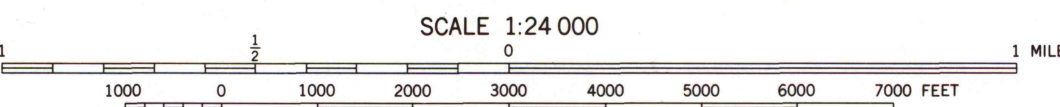
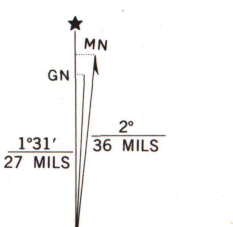
Control by USGS and NOS/NOAA

Topography by photogrammetric methods from aerial photographs taken 1978. Field checked 1980. Map edited 1983

Projection: Wisconsin coordinate system, central zone (Lambert conformal conic)  
10,000-foot grid ticks based on Wisconsin coordinate system, central and south zones

1000-meter Universal Transverse Mercator grid, zone 15  
1927 North American Datum  
To place on the predicted North American Datum 1983 move the projection lines 7 meters north and 12 meters east as shown by dashed corner ticks

There may be private inholdings within the boundaries of the National or State reservations shown on this map. Fine red dashed lines indicate selected fence and field lines where generally visible on aerial photographs. This information is unchecked



SCALE 1:24 000  
CONTOUR INTERVAL 10 FEET  
DOTTED LINES REPRESENT 5-FOOT CONTOURS  
NATIONAL GEODETIC VERTICAL DATUM OF 1929

THIS MAP COMPLIES WITH NATIONAL MAP ACCURACY STANDARDS  
FOR SALE BY U. S. GEOLOGICAL SURVEY, RESTON, VIRGINIA 22092  
AND WISCONSIN GEOLOGICAL AND NATURAL HISTORY SURVEY, MADISON, WISCONSIN 53706  
A FOLDER DESCRIBING TOPOGRAPHIC MAPS AND SYMBOLS IS AVAILABLE ON REQUEST



ROAD CLASSIFICATION

Primary highway, hard surface	Light-duty road, hard or improved surface
Secondary highway, hard surface	Unimproved road
Interstate Route	U. S. Route
	State Route

SHAMROCK, WIS.  
NE 4 MELROSE 15' QUADRANGLE  
N4407.5-W9045/7.5

1983  
DMA 2872 III NE-SERIES V861

A.H. ROBINSON  
MAP LIBRARY  
SEP - 6 1984  
University of Wisconsin  
Madison

1983  
Copy  
1-1