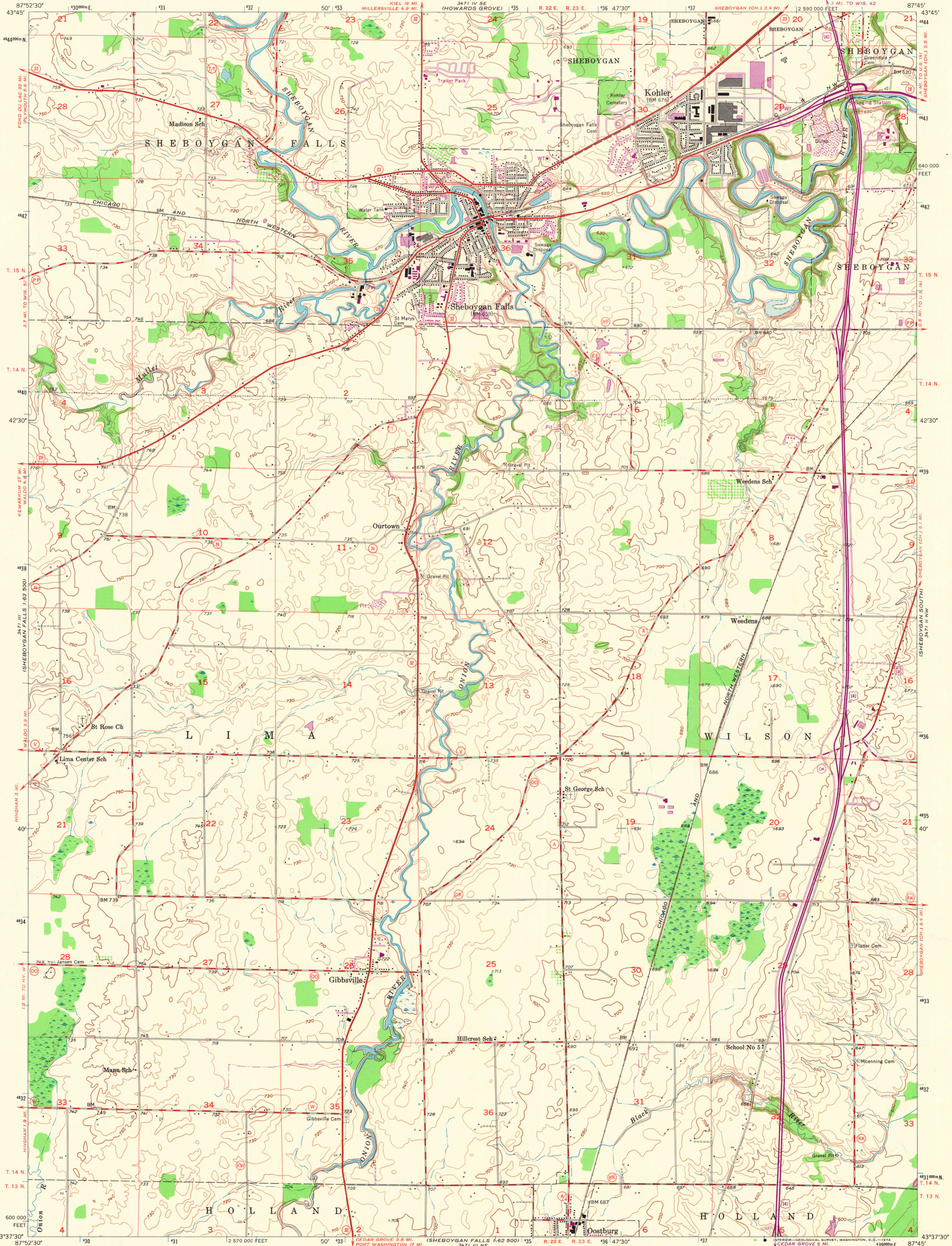
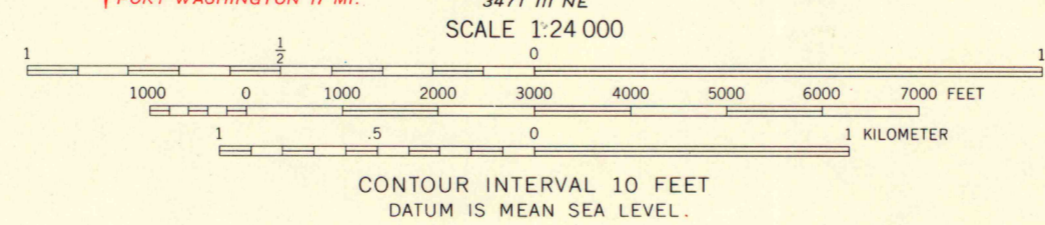
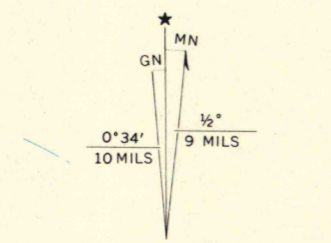


UNITED STATES  
DEPARTMENT OF THE INTERIOR  
GEOLOGICAL SURVEY

SHEBOYGAN FALLS QUADRANGLE  
WISCONSIN-SHEBOYGAN CO.  
7.5 MINUTE SERIES (TOPOGRAPHIC)  
NE/4 SHEBOYGAN FALLS 15' QUADRANGLE



Mapped, edited, and published by the Geological Survey  
Control by USGS and USC&GS  
Topography from aerial photographs by Kesh plotter  
Aerial photographs taken 1952. Field check 1954  
Polyconic projection. 1927 North American datum  
10,000-foot grid based on Wisconsin coordinate system,  
south zone  
1000-meter Universal Transverse Mercator grid ticks,  
zone 16, shown in blue  
Revisions shown in purple compiled from aerial photographs  
taken 1973. This information not field checked



CONTOUR INTERVAL 10 FEET  
DATUM IS MEAN SEA LEVEL.

ROAD CLASSIFICATION

Heavy-duty	Light-duty
Medium-duty	Unimproved dirt
U.S. Route	State Route



THIS MAP COMPLIES WITH NATIONAL MAP ACCURACY STANDARDS  
FOR SALE BY U. S. GEOLOGICAL SURVEY, WASHINGTON, D. C. 20242  
AND BY THE WISCONSIN GEOLOGICAL AND NATURAL HISTORY SURVEY, MADISON, WISCONSIN 53706  
A FOLDER DESCRIBING TOPOGRAPHIC MAPS AND SYMBOLS IS AVAILABLE ON REQUEST

SHEBOYGAN FALLS, WIS.  
NE/4 SHEBOYGAN FALLS 15' QUADRANGLE  
N4337.5-W8745.7.5

1954

PHOTOREVISED 1973  
AMS 3471 III NE-SERIES V861

1973  
copy  
1-1

MAP AND AIR PHOTO

SEP 19 1974

University of Wisconsin