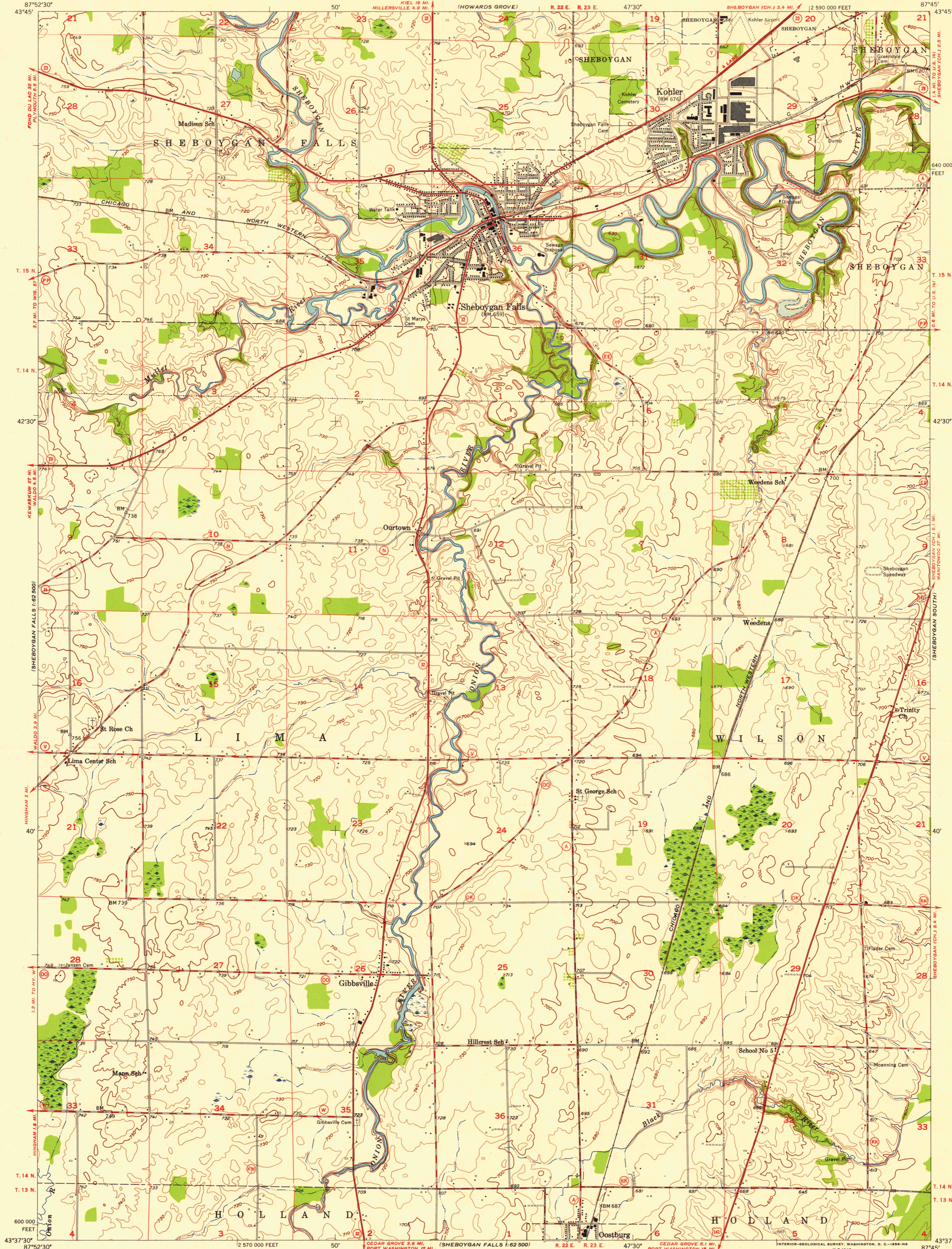
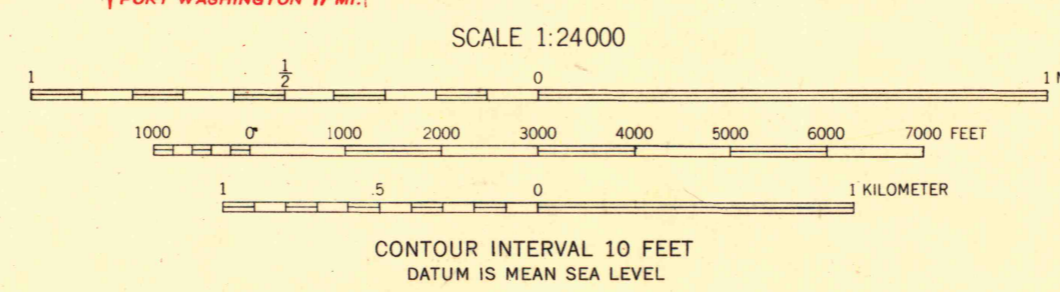


UNITED STATES  
DEPARTMENT OF THE INTERIOR  
GEOLOGICAL SURVEY

SHEBOYGAN FALLS QUADRANGLE  
WISCONSIN-SHEBOYGAN CO.  
7.5 MINUTE SERIES (TOPOGRAPHIC)  
NE 1/4 SHEBOYGAN FALLS 15' QUADRANGLE



Maped, edited, and published by the Geological Survey  
Control by USGS and USC&GS  
Topography from aerial photographs by Kelsch plottor  
Aerial photographs taken 1952. Field check 1954  
Polyconic projection. 1927 North American datum  
10,000-foot grid based on Wisconsin coordinate system,  
south zone



ROAD CLASSIFICATION  
Heavy-duty \_\_\_\_\_ Light-duty \_\_\_\_\_  
Medium-duty \_\_\_\_\_ Unimproved dirt \_\_\_\_\_  
U.S. Route \_\_\_\_\_ State Route \_\_\_\_\_



SHEBOYGAN FALLS, WIS.  
NE 1/4 SHEBOYGAN FALLS 15' QUADRANGLE  
N4337.5-W8745.7.5

1954

THIS MAP COMPLIES WITH NATIONAL MAP ACCURACY STANDARDS  
FOR SALE BY U. S. GEOLOGICAL SURVEY, WASHINGTON 25, D. C.  
AND BY THE WISCONSIN GEOLOGICAL AND NATURAL HISTORY SURVEY, MADISON 6, WISCONSIN  
A FOLDER DESCRIBING TOPOGRAPHIC MAPS AND SYMBOLS IS AVAILABLE ON REQUEST

FOR LIBRARY USE ONLY

UNIVERSITY OF WISCONSIN  
Department of Geography

1954  
COPY  
1-1