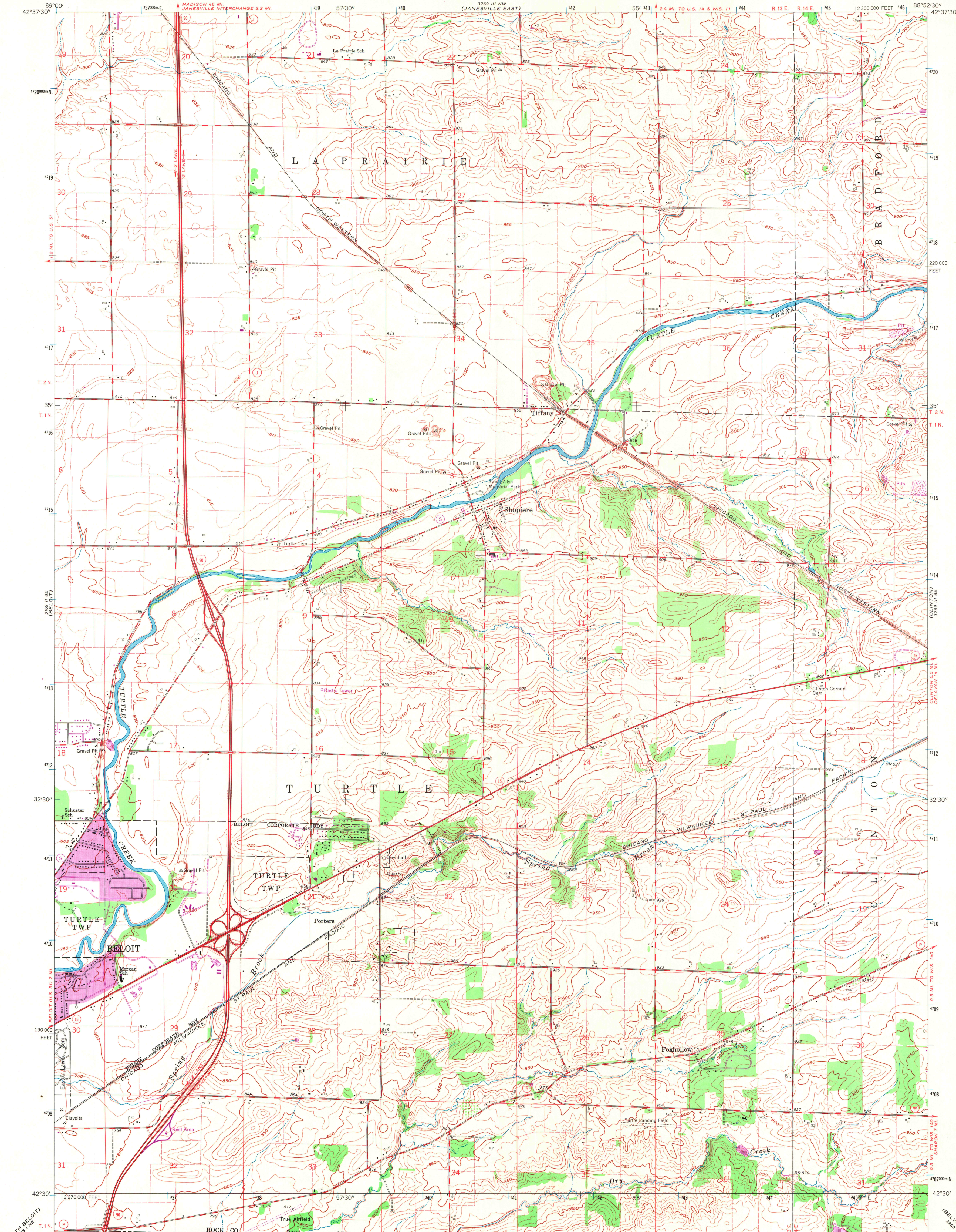
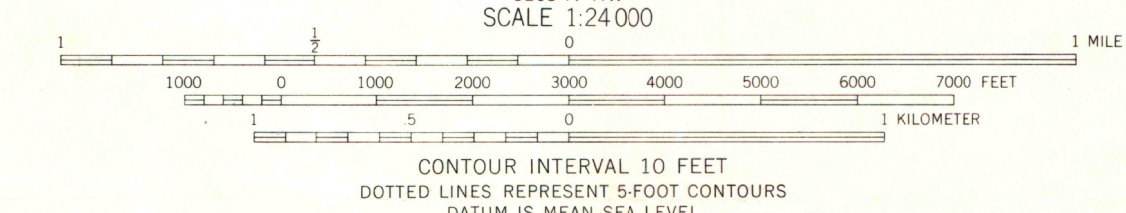
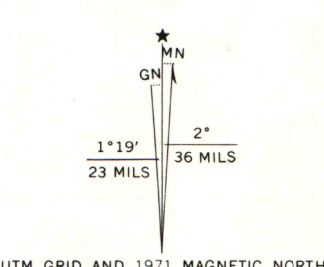


UNITED STATES  
DEPARTMENT OF THE INTERIOR  
GEOLOGICAL SURVEY

SHOPIERE QUADRANGLE  
WISCONSIN-ROCK CO.  
7.5 MINUTE SERIES (TOPOGRAPHIC)  
SW 4 SHOPIERE 15' QUADRANGLE



Mapped, edited, and published by the Geological Survey  
Control by USGS and USC&GS  
Topography by photogrammetric methods from aerial  
photographs taken 1955. Field checked 1961  
Polyconic projection. 1927 North American datum  
10,000-foot grid based on Wisconsin coordinate system, south zone  
1000-meter Universal Transverse Mercator grid ticks,  
zone 16, shown in blue  
Fine red dashed lines indicate selected fence and field lines which  
generally visible on aerial photographs. This information is unchecked  
Revisions shown in purple compiled from aerial photographs  
taken 1971. This information not field checked  
Purple tint indicates extension of urban areas



ROAD CLASSIFICATION	
Heavy-duty	Light-duty
Medium-duty	Unimproved dirt
Interstate Route	State Route

THIS MAP COMPLIES WITH NATIONAL MAP ACCURACY STANDARDS  
FOR SALE BY U. S. GEOLOGICAL SURVEY, WASHINGTON, D. C. 20242  
AND BY THE WISCONSIN GEOLOGICAL AND NATURAL HISTORY SURVEY, MADISON, WISCONSIN 53706  
A FOLDER DESCRIBING TOPOGRAPHIC MAPS AND SYMBOLS IS AVAILABLE ON REQUEST

SHOPIERE, WIS.  
SW 4 SHOPIERE 15' QUADRANGLE  
N4230-W8552.5/7.5

1971 COPY 1-1  
MAP AND AIR PHOTO LIBRARY  
MAY 23 1972  
University of Wisconsin