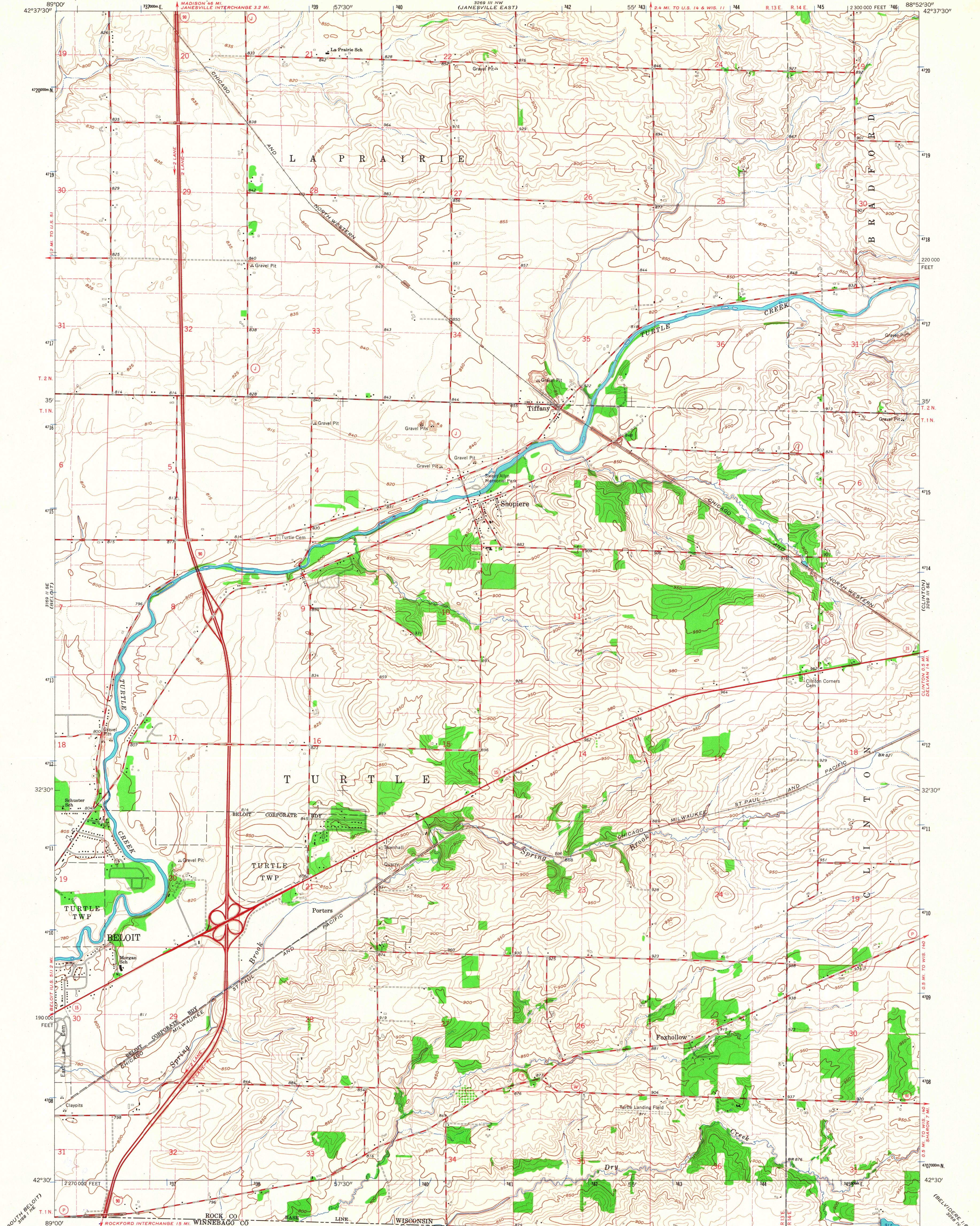
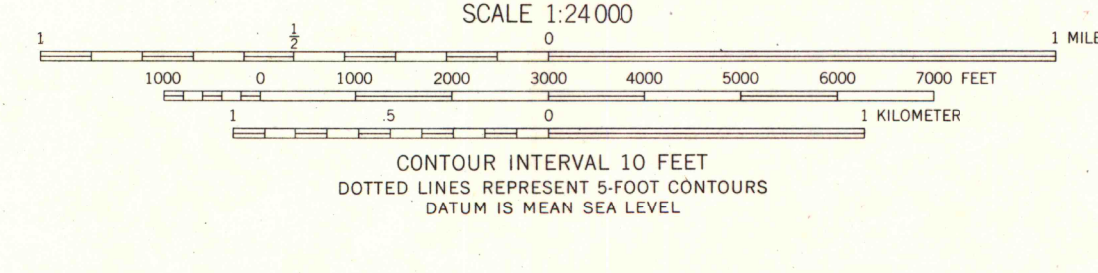
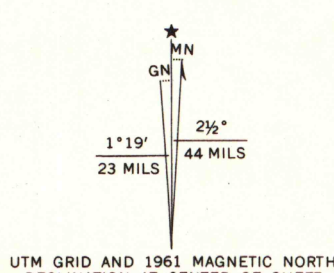


UNITED STATES
DEPARTMENT OF THE INTERIOR
GEOLOGICAL SURVEY

SHOPIERE QUADRANGLE
WISCONSIN
7.5 MINUTE SERIES (TOPOGRAPHIC)
SW/4 SHOPIERE 15' QUADRANGLE



Mapped, edited, and published by the Geological Survey
Control by USGS and USC&GS
Topography by photogrammetric methods from aerial
photographs taken 1955. Field checked 1961
Polyconic projection. 1927 North American datum
10,000-foot grid based on Wisconsin coordinate system, south zone
1000-meter Universal Transverse Mercator grid ticks,
zone 16, shown in blue
Fine red dashed lines indicate selected fence and field lines where
generally visible on aerial photographs. This information is unchecked



ROAD CLASSIFICATION

Heavy-duty	Light-duty
Medium-duty	Unimproved dirt
Interstate Route	State Route

THIS MAP COMPLIES WITH NATIONAL MAP ACCURACY STANDARDS
FOR SALE BY U. S. GEOLOGICAL SURVEY, WASHINGTON 25, D. C.
AND BY THE WISCONSIN GEOLOGICAL AND NATURAL HISTORY SURVEY, MADISON 6, WISCONSIN

SHOPIERE, WIS.
SW/4 SHOPIERE 15' QUADRANGLE

1961