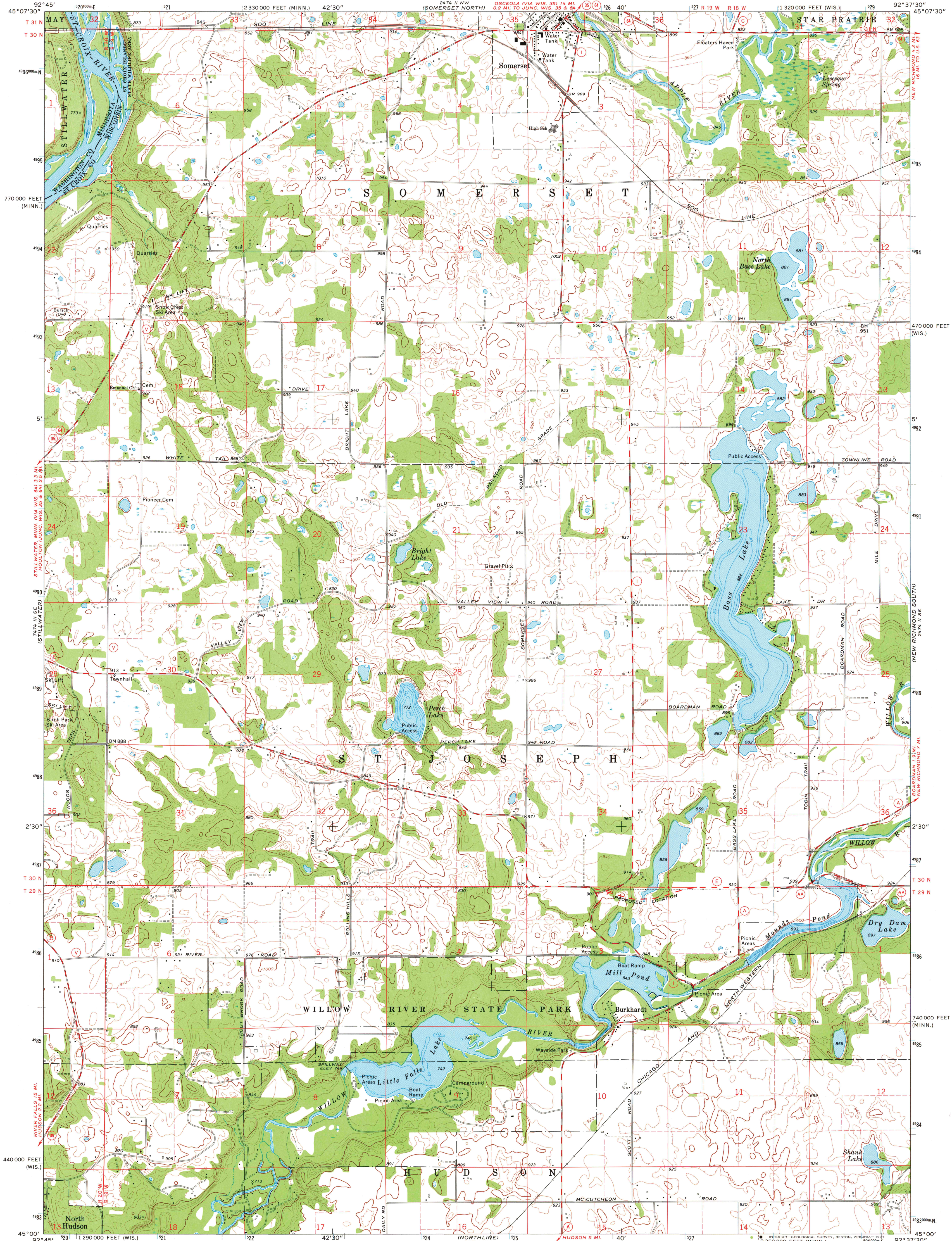


UNITED STATES
DEPARTMENT OF THE INTERIOR
GEOLOGICAL SURVEY

STATE OF WISCONSIN
DIVISION OF HIGHWAYS
GEOLOGICAL AND NATURAL HISTORY SURVEY

SOMERSET SOUTH QUADRANGLE
WISCONSIN-MINNESOTA
7.5 MINUTE SERIES (TOPOGRAPHIC)
SW/4 NEW RICHMOND 15' QUADRANGLE



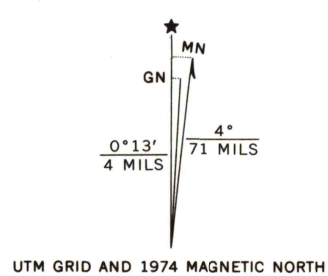
Mapped, edited, and published by the Geological Survey
in cooperation with the Wisconsin Division of Highways
and Wisconsin Geological and Natural History Survey
Control by USGS and NOS/NOAA

Topography by photogrammetric methods from aerial
photographs taken 1973. Field checked 1974

Hydrography compiled from information furnished by
Wisconsin Department of Natural Resources

Projection: Wisconsin coordinate system, central zone
(Lambert conformal conic)
10,000-foot grid ticks based on Wisconsin coordinate
system, central zone and Minnesota coordinate system, south zone
1000-metre Universal Transverse Mercator grid ticks,
zone 15, shown in blue. 1927 North American datum

Fine red dashed lines indicate selected fence and field lines where
generally visible on aerial photographs. This information is unchecked



SCALE 1:24 000
CONTOUR INTERVAL 20 FEET
NATIONAL GEODETIC VERTICAL DATUM OF 1929

THIS MAP COMPLIES WITH NATIONAL MAP ACCURACY STANDARDS
FOR SALE BY U.S. GEOLOGICAL SURVEY, RESTON, VIRGINIA 22092
AND WISCONSIN GEOLOGICAL AND NATURAL HISTORY SURVEY, MADISON, WISCONSIN 53706
A FOLDER DESCRIBING TOPOGRAPHIC MAPS AND SYMBOLS IS AVAILABLE ON REQUEST



ROAD CLASSIFICATION
Primary highway, hard surface
Secondary highway, hard surface
Interstate Route
Light-duty road, hard or improved surface
Unimproved road
U.S. Route
State Route

SOMERSET SOUTH, WIS.-MINN.
SW/4 NEW RICHMOND 15' QUADRANGLE
N4500-W9237.5/7.5

USGS
Historical File
Topographic Division

1974

AMS 2474 11 SW-SERIES V861

OCT 2 1 1977