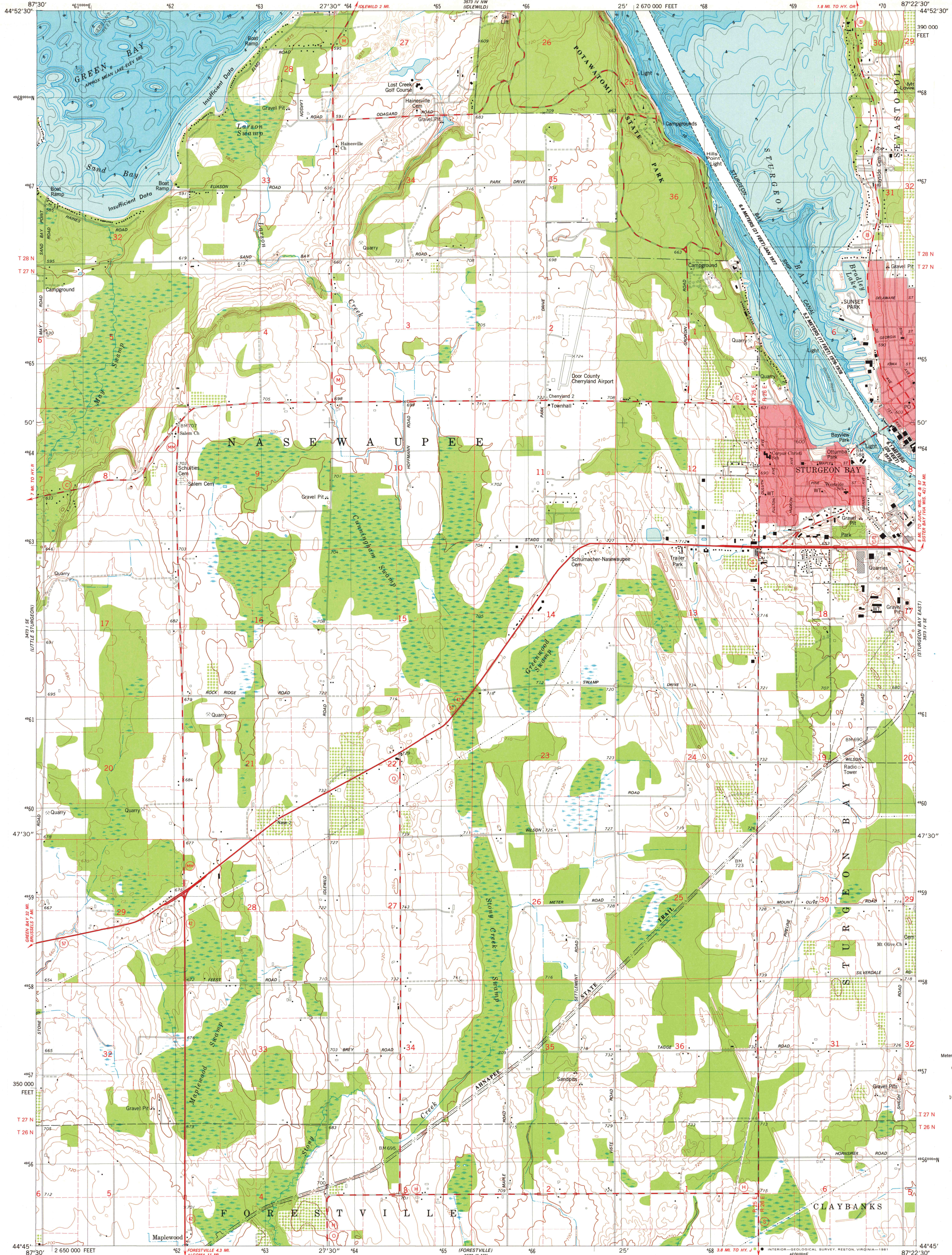


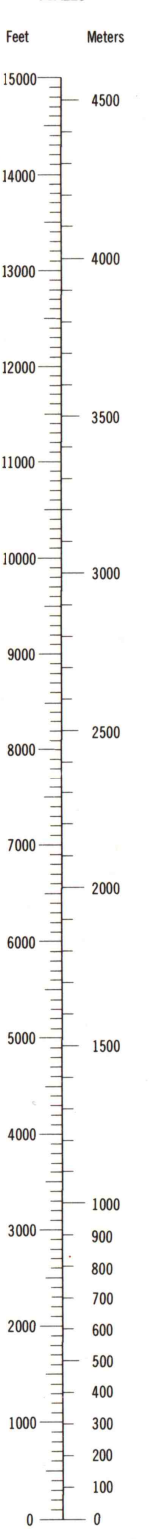
UNITED STATES
DEPARTMENT OF THE INTERIOR
GEOLOGICAL SURVEY

STATE OF WISCONSIN
DIVISION OF HIGHWAYS
GEOLOGICAL AND NATURAL HISTORY SURVEY

STURGEON BAY WEST QUADRANGLE
WISCONSIN-DOOR CO.
7.5 MINUTE SERIES (TOPOGRAPHIC-BATHYMETRIC)



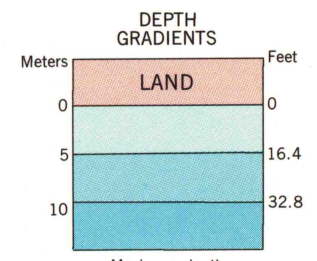
CONVERSION
SCALES



Feet Meters

1	3048
2	6096
3	9144
4	12192
5	15240
6	18288
7	21336
8	24384
9	27432
10	30480

To convert feet to meters
multiply by 3048
To convert meters to feet
multiply by 3.2808



Mapped, edited, and published by the Geological Survey and the National Ocean Survey in cooperation with the Wisconsin Division of Highways and Wisconsin Geological and Natural History Survey

Control by USGS and NOS/NOAA

Topography by photogrammetric methods from aerial photographs taken 1954-55. Revised from aerial photographs taken 1978. Field checked 1980. Map edited 1981

Bathymetry compiled by the National Ocean Survey from tide-coordinated hydrographic surveys. This information is not intended for navigational purposes

Projection and 10,000-foot grid ticks: Wisconsin coordinate system, central zone (Lambert conformal conic) 1000-meter Universal Transverse Mercator grid, zone 16 1927 North American Datum

To place on the predicted North American Datum 1983 move the projection lines 4 meters north and 5 meters east as shown by dashed corner ticks

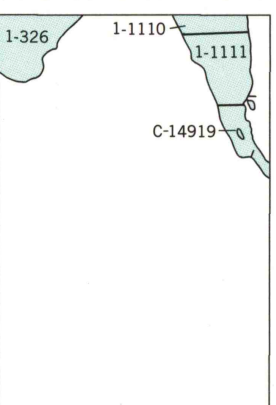
There may be private inholdings within the boundaries of the National or State reservations shown on this map

Red tint indicates areas in which only landmark buildings are shown

Fine red dashed lines indicate selected fence and field lines where generally visible on aerial photographs

This information is unchecked

NATIONAL OCEAN SURVEY
HYDROGRAPHIC SURVEY INDEX



Survey Number	Survey Date	Survey Scale	Survey Line (Naut. Miles)
1-326	1865	1:16,000	05-15
1-110	1905	1:10,000	03-40
1-1111	1906	1:10,000	02-10

NOS CHART 14919 AUG. 2, 1980 1:10,000

SCALE 1:24,000

1000 0 1000 2000 3000 4000 5000 6000 7000 FEET
1 KILOMETER

CONTOUR INTERVAL 10 FEET
DOTTED LINES REPRESENT 2.5 FOOT CONTOURS ALONG SHORELINE

NATIONAL GEODETIC VERTICAL DATUM OF 1929
BATHYMETRIC CONTOUR INTERVAL 1 METER

WITH SUPPLEMENTARY 0.5 METER CONTOURS
DATUM IS LOW WATER 576.8 FEET

INTERNATIONAL GREAT LAKES DATUM OF 1955



QUADRANGLE LOCATION

UTM GRID AND 1981 MAGNETIC NORTH
DECLINATION AT CENTER OF SHEET

ROAD CLASSIFICATION	Symbol
Primary highway, hard surface	—
Light-duty road, hard or improved surface	—
Secondary highway, hard surface	—
Unimproved road	—
Interstate Route	—
U.S. Route	—
State Route	—

STURGEON BAY WEST, WIS.

SW/4 STURGEON BAY 15' QUADRANGLE
N4445-W8722.5/7.5

1981

DMA 3573 IV SW-SERIES V861

RETURN TO:
USGS AND HISTORICAL MAP ARCHIVES

OCT 20 1981