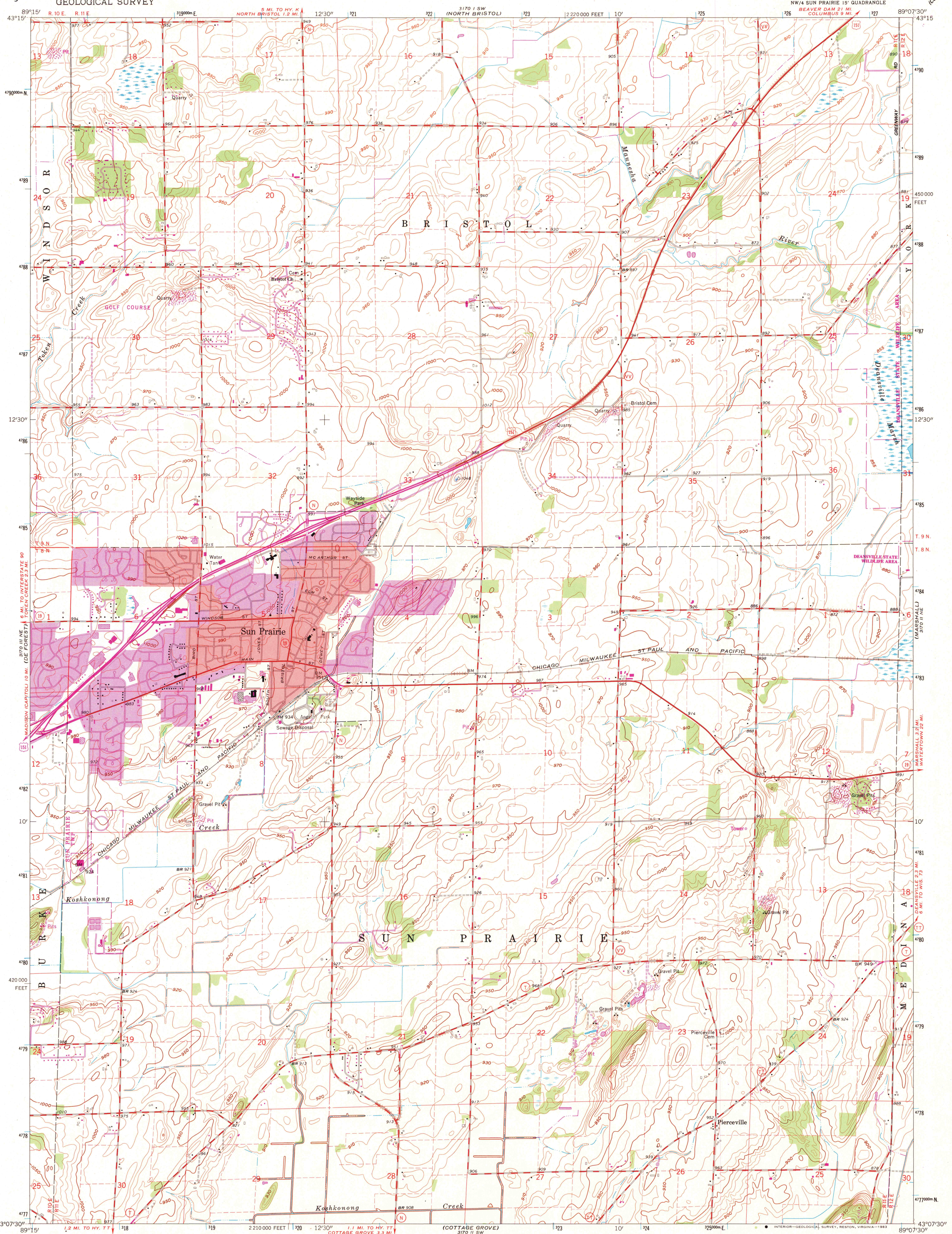


UNITED STATES  
DEPARTMENT OF THE INTERIOR  
GEOLOGICAL SURVEY

SUN PRAIRIE QUADRANGLE  
WISCONSIN—DANE CO.  
7.5 MINUTE SERIES (TOPOGRAPHIC)



Mapped, edited, and published by the Geological Survey  
in cooperation with State of Wisconsin agencies

Control by USGS and USC&GS

Topography by photogrammetric methods from aerial  
photographs taken 1960. Field checked 1962

Polyconic projection. 1927 North American datum  
10,000-foot grid based on Wisconsin coordinate system, south zone  
1000-meter Universal Transverse Mercator grid ticks,  
zone 16, shown in blue

Red tint indicates areas in which only landmark buildings are shown

To place on the predicted North American Datum 1983  
move the projection lines 4 meters north and  
9 meters east as shown by dashed corner ticks

There may be private inholdings within the boundaries of  
the National or State reservations shown on this map

SCALE 1:24,000

CONTOUR INTERVAL 10 FEET  
DOTTED LINES REPRESENT 5-FOOT CONTOURS  
NATIONAL GEODETIC VERTICAL DATUM OF 1929

THIS MAP COMPLIES WITH NATIONAL MAP ACCURACY STANDARDS  
FOR SALE BY U. S. GEOLOGICAL SURVEY, RESTON, VIRGINIA 22092  
AND BY THE WISCONSIN GEOLOGICAL AND NATURAL HISTORY SURVEY, MADISON, WISCONSIN 53706  
A FOLDER DESCRIBING TOPOGRAPHIC MAPS AND SYMBOLS IS AVAILABLE ON REQUEST

ROAD CLASSIFICATION  
Heavy-duty ——— Light-duty ———  
Medium-duty ——— Unimproved dirt ———  
U. S. Route ——— State Route ———



QUADRANGLE LOCATION

SUN PRAIRIE, WIS.  
NW 1/4 SUN PRAIRIE 15' QUADRANGLE  
N4307.5—W8907.5/7.5

1962  
PHOTOREVISED 1982

DMA 3170 II NW—SERIES V861

1982  
copy  
1-1

A.H. ROBINSON  
MAP LIBRARY

AUG 10 1983

University of Wisconsin  
Madison