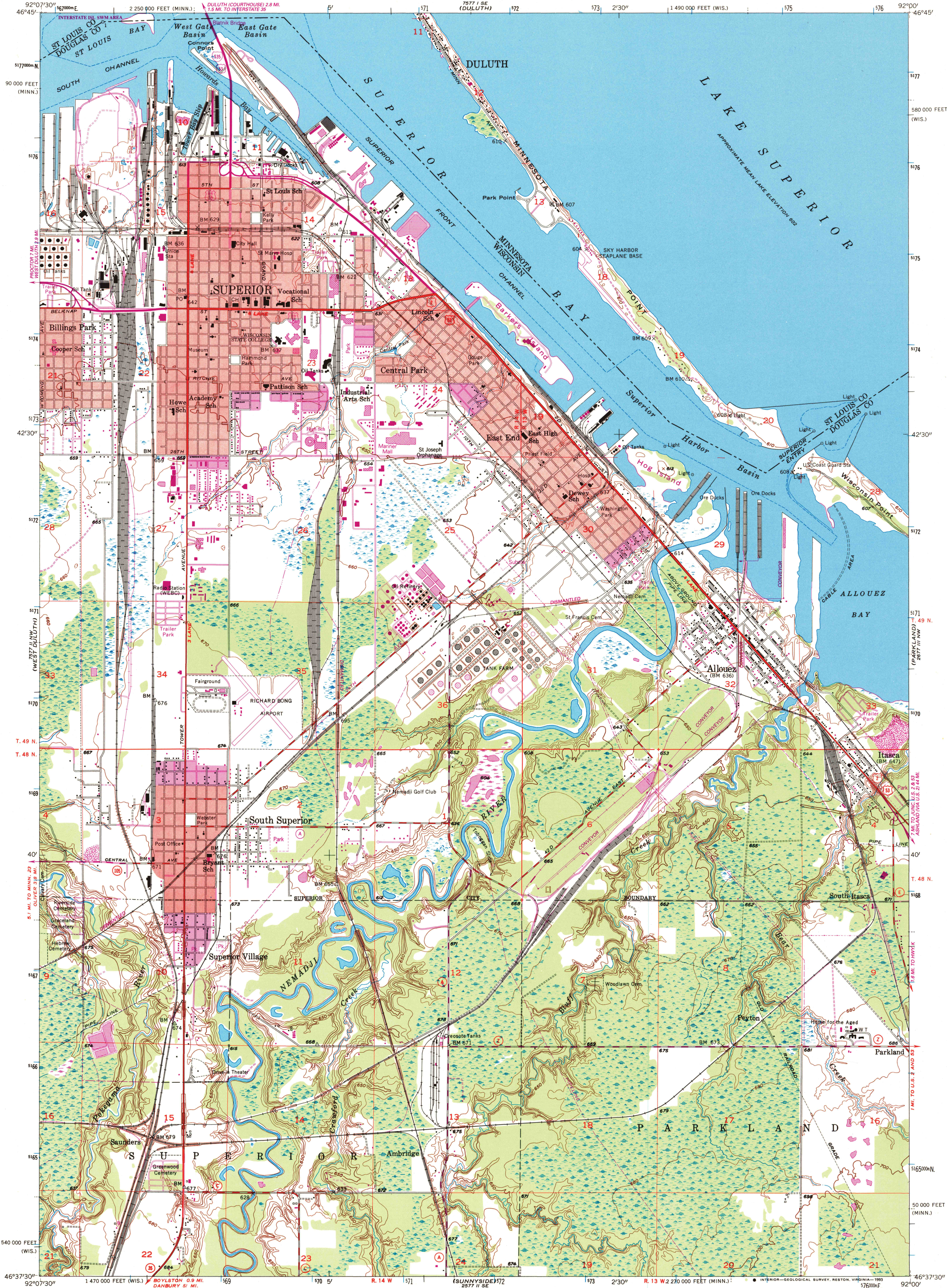


UNITED STATES
DEPARTMENT OF THE INTERIOR
GEOLOGICAL SURVEY

SUPERIOR QUADRANGLE
WISCONSIN-MINNESOTA
7.5 MINUTE SERIES (TOPOGRAPHIC)
NE/4 SUPERIOR 15' QUADRANGLE



Produced by the United States Geological Survey

Control by USGS and NOS/NOAA

Topography by photogrammetric methods from aerial photographs taken 1952 and planimetric surveys 1954

Hydrography by U.S. Lake Survey Chart 966 (1:15,000)

Projection: Wisconsin coordinate system, north zone (Lambert conformal conic)

10,000-foot grid ticks: Wisconsin coordinate system, north zone, and Minnesota coordinate system, north zone

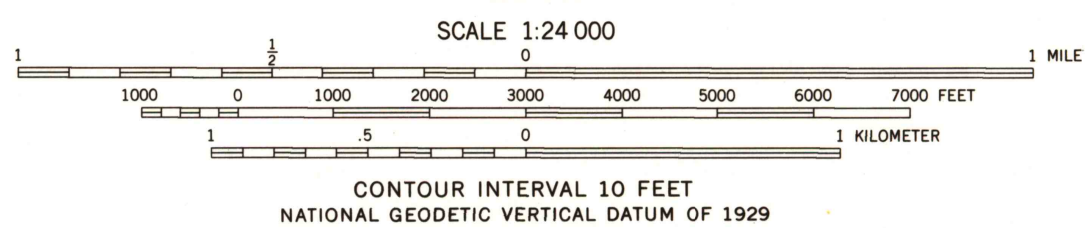
1000-meter Universal Transverse Mercator grid ticks, zone 15, shown in blue

1927 North American Datum (NAD 27)

North American Datum of 1983 (NAD 83) is shown by dashed corner ticks

The values of the shift between NAD 27 and NAD 83 for 7.5-minute intersections are given in USGS Bulletin 1875

Red tint indicates areas in which only landmark buildings are shown



COMPLIES WITH U.S. GEOLOGICAL SURVEY STANDARDS FOR SPATIAL ACCURACY-CLASS 2
FOR SALE BY U.S. GEOLOGICAL SURVEY, DENVER, COLORADO 80225, OR RESTON, VIRGINIA 22092
AND WISCONSIN GEOLOGICAL AND NATURAL HISTORY SURVEY, MADISON, WISCONSIN 53706
A FOLDER DESCRIBING TOPOGRAPHIC MAPS AND SYMBOLS IS AVAILABLE ON REQUEST

ROAD CLASSIFICATION
Primary highway, hard surface ————
Secondary highway, hard surface ————
Unimproved road ————
Interstate Route ————
U.S. Route ————
State Route ————



QUADRANGLE LOCATION

Revisions shown in purple compiled in cooperation with State of Minnesota agencies from aerial photographs taken 1991 and other sources

This information not field checked. Map edited 1993

Information shown in purple may not meet USGS content standards and may conflict with previously mapped contours

Purple tint indicates extension of urban area

SUPERIOR, WIS.-MINN.

NE/4 SUPERIOR 15' QUADRANGLE
46092-F1-TF-024

1954
REVISED 1993

DMA 2577 II NE - SERIES V861

