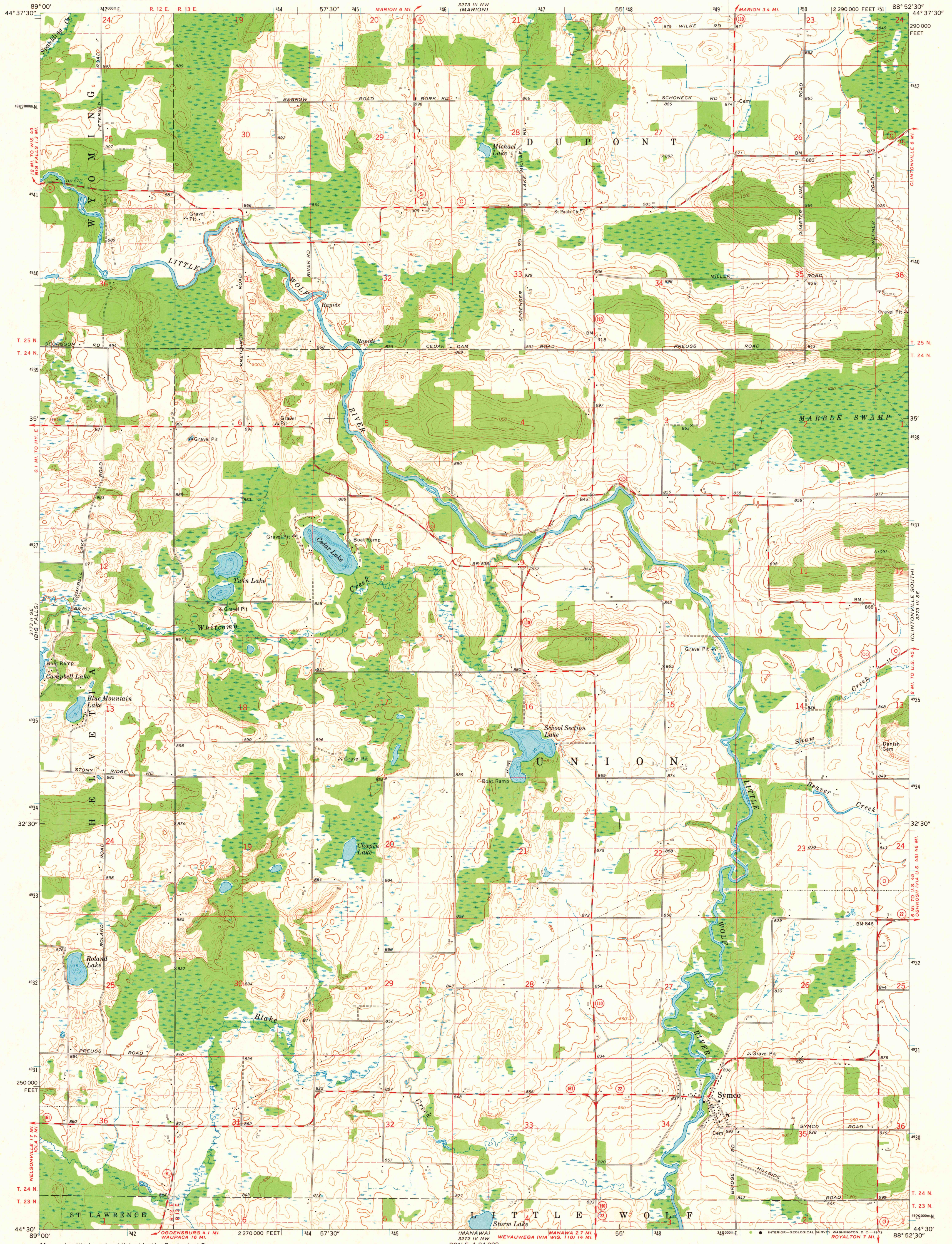


UNITED STATES  
DEPARTMENT OF THE INTERIOR  
GEOLOGICAL SURVEY

SYMCO QUADRANGLE  
WISCONSIN—WAUPACA CO.  
7.5 MINUTE SERIES (TOPOGRAPHIC)  
SW/4 CLINTONVILLE 15' QUADRANGLE



Mapped, edited, and published by the Geological Survey

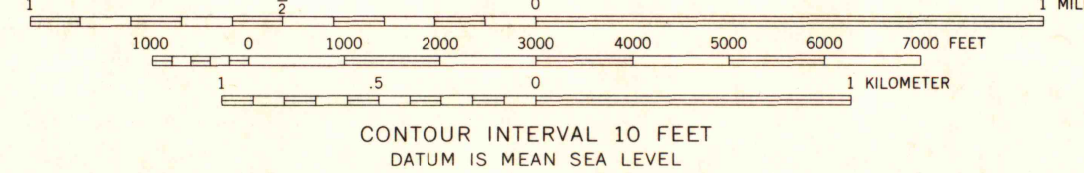
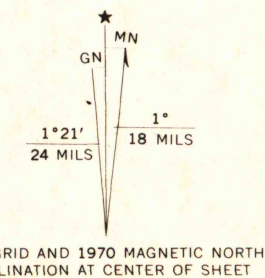
Control by USGS and USC&GS

Topography by photogrammetric methods from aerial photographs taken 1968. Field checked 1970

Depth curves compiled from charts furnished by Wisconsin Department of Natural Resources

Polyconic projection. 1927 North American datum 10,000-foot grid based on Wisconsin coordinate system, central zone 1000-meter Universal Transverse Mercator grid ticks, zone 16, shown in blue

Fine red dashed lines indicate selected fence and field lines where generally visible on aerial photographs. This information is unchecked



CONTOUR INTERVAL 10 FEET  
DATUM IS MEAN SEA LEVEL



QUADRANGLE LOCATION

ROAD CLASSIFICATION

Primary highway, hard surface	Light-duty road, hard or improved surface
Secondary highway, hard surface	Unimproved road
Interstate Route	U. S. Route
	State Route

THIS MAP COMPLIES WITH NATIONAL MAP ACCURACY STANDARDS FOR SALE BY U. S. GEOLOGICAL SURVEY, WASHINGTON, D. C. 20242 AND BY THE WISCONSIN GEOLOGICAL AND NATURAL HISTORY SURVEY, MADISON, WISCONSIN 53706 A FOLDER DESCRIBING TOPOGRAPHIC MAPS AND SYMBOLS IS AVAILABLE ON REQUEST

SYMCO, WIS.  
SW/4 CLINTONVILLE 15' QUADRANGLE  
N4430—W852.5/7.5

1970  
AMS 3273 III SW—SERIES V861

MAP AND AIR PHOTO LIBRARY

MAY 9 1973

University of Wisconsin

1970 Copy 1-1