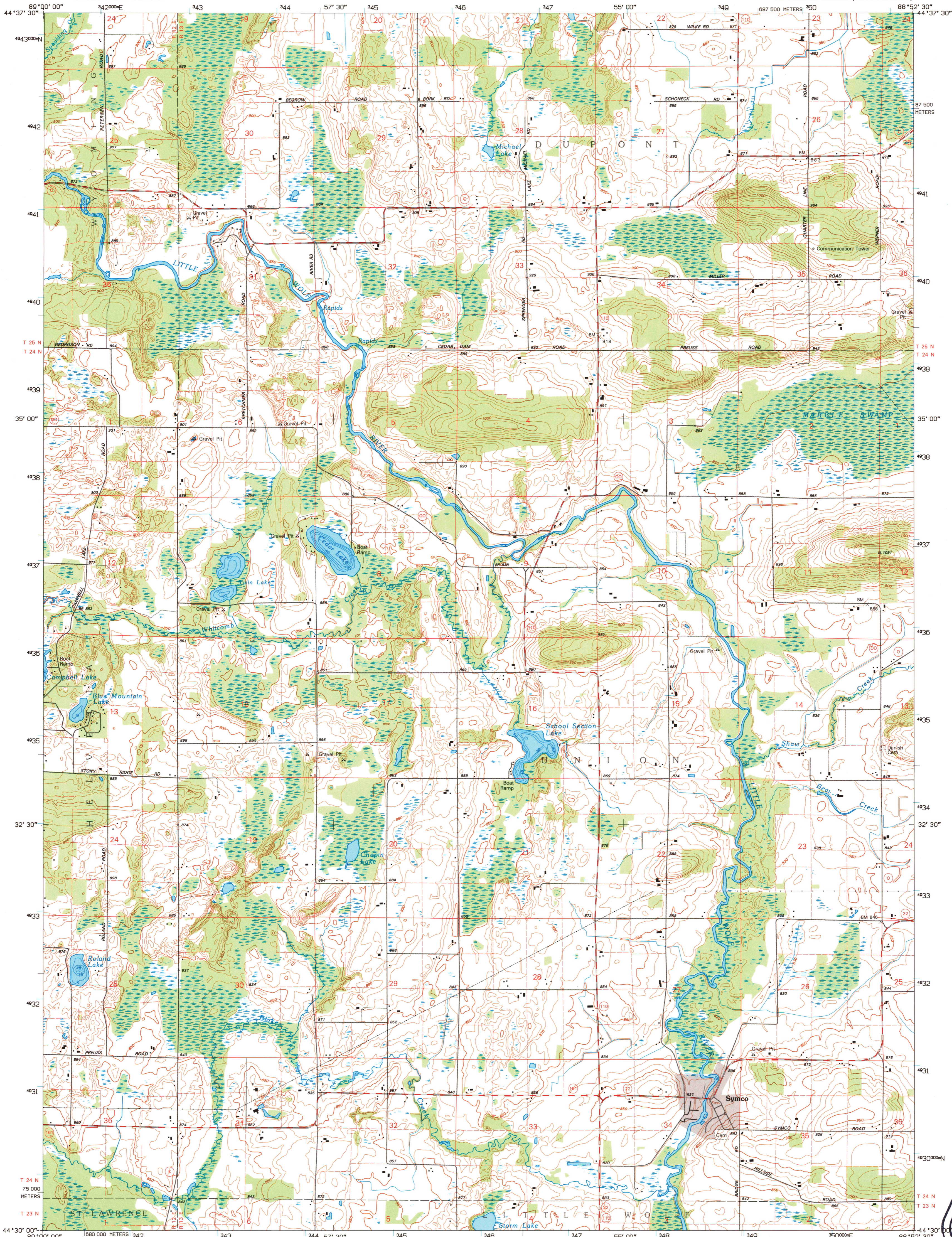
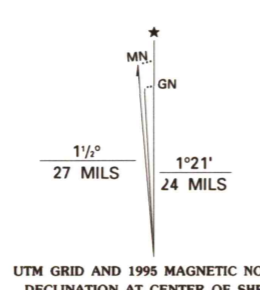


UNITED STATES
DEPARTMENT OF THE INTERIOR
GEOLOGICAL SURVEY

SYMCO QUADRANGLE
WISCONSIN-WAUPACA CO.
7.5-MINUTE SERIES (TOPOGRAPHIC)



Produced by the United States Geological Survey
Compiled by photogrammetric methods from imagery dated 1968
Field checked 1970. Revised in cooperation with the State of Wisconsin agencies from imagery dated 1993. PLS and survey control current as of 1970. Map edited 1995. Contours not revised.
Hydrography compiled from information furnished by Wisconsin Department of Natural Resources
North American Datum of 1983 (NAD 83). Projection and blue 1000-meter ticks: Universal Transverse Mercator, zone 16
2 500-meter ticks: Wisconsin Coordinate System of 1983 (central zone)
North American Datum of 1927 (NAD 27) is shown by dashed corner ticks. The values of the shift between NAD 83 and NAD 27 for 7.5-minute intersections are obtainable from National Geodetic Survey NADCON software



SCALE 1:24 000

CONTOUR INTERVAL 10 FEET
NATIONAL GEODETIC VERTICAL DATUM OF 1929

THIS MAP COMPLIES WITH NATIONAL MAP ACCURACY STANDARDS
FOR SALE BY U.S. GEOLOGICAL SURVEY
DENVER, COLORADO 80225, OR RESTON, VIRGINIA 22092
AND WISCONSIN GEOLOGICAL AND NATURAL HISTORY SURVEY, MADISON, WISCONSIN 53706
A FOLDER DESCRIBING TOPOGRAPHIC MAPS AND SYMBOLS IS AVAILABLE ON REQUEST



QUADRANGLE LOCATION

| | | | |
|---|---|---|----------------------|
| 1 | 2 | 3 | 1 Tipton |
| 2 | 3 | 4 | 2 Marion |
| 3 | 4 | 5 | 3 Cliftonville North |
| 4 | 5 | 6 | 4 Big Falls |
| 5 | 6 | 7 | 5 Cliftonville South |
| 6 | 7 | 8 | 6 Opdensburg |
| | | | 7 Manawa |
| | | | 8 Northport |

ROAD CLASSIFICATION
 Primary highway
 hard surface
 improved surface
 Secondary highway
 hard surface
 Unimproved road
 Interstate Route
 U.S. Route
 State Route

USGS AND HISTORICAL
MAP ARCHIVES
JAN 1996
REC'D FILE COPY

SYMCO, WI
44088-E8-TF-024
1993

DMA 3273 III SW-SERIES V861

